

# Harvest Summary 2009

or . . .

Everything you really didn't want to  
know about the Duluth Bowhunt,  
and were afraid to ask.

Submitted to ABA Board

By Bork

# 2005 Results

- **9600 Acres open to hunting**
- **210 Applicants**
  - 189 Hunters Qualified and were Placed
  - 177 Actually Hunted
- **331 Deer Harvested (263 ♀, 68 ♂)**
- **1.87 Deer / Hunter**
  - 0.13 / Bowhunter MN Mean
- **22.1 deer / mile<sup>2</sup> harvested**
- **Wounding Rate of 7.8%**

# 2006 Results

- 20,100 Acres open to hunting
- 260 Applicants
  - 251 Placed
  - 195 Reported Harvest
- 564 Deer Harvested (485♀, 79♂)
  - 2.25 deer / hunter (if all hunted)
  - 2.9 deer / successful hunter
- 7.2 % Wounding Rate
- 18.0 deer / mile<sup>2</sup> harvested

# 2007 Results

- 22,252 Acres Open to Hunting
- 315 Hunters Placed
- Estimated 310 Actually Hunted
- 567 Deer Harvested (476♀, 91♂)
- 1.8 Deer / hunter
- 16.3 deer / mile<sup>2</sup> harvested

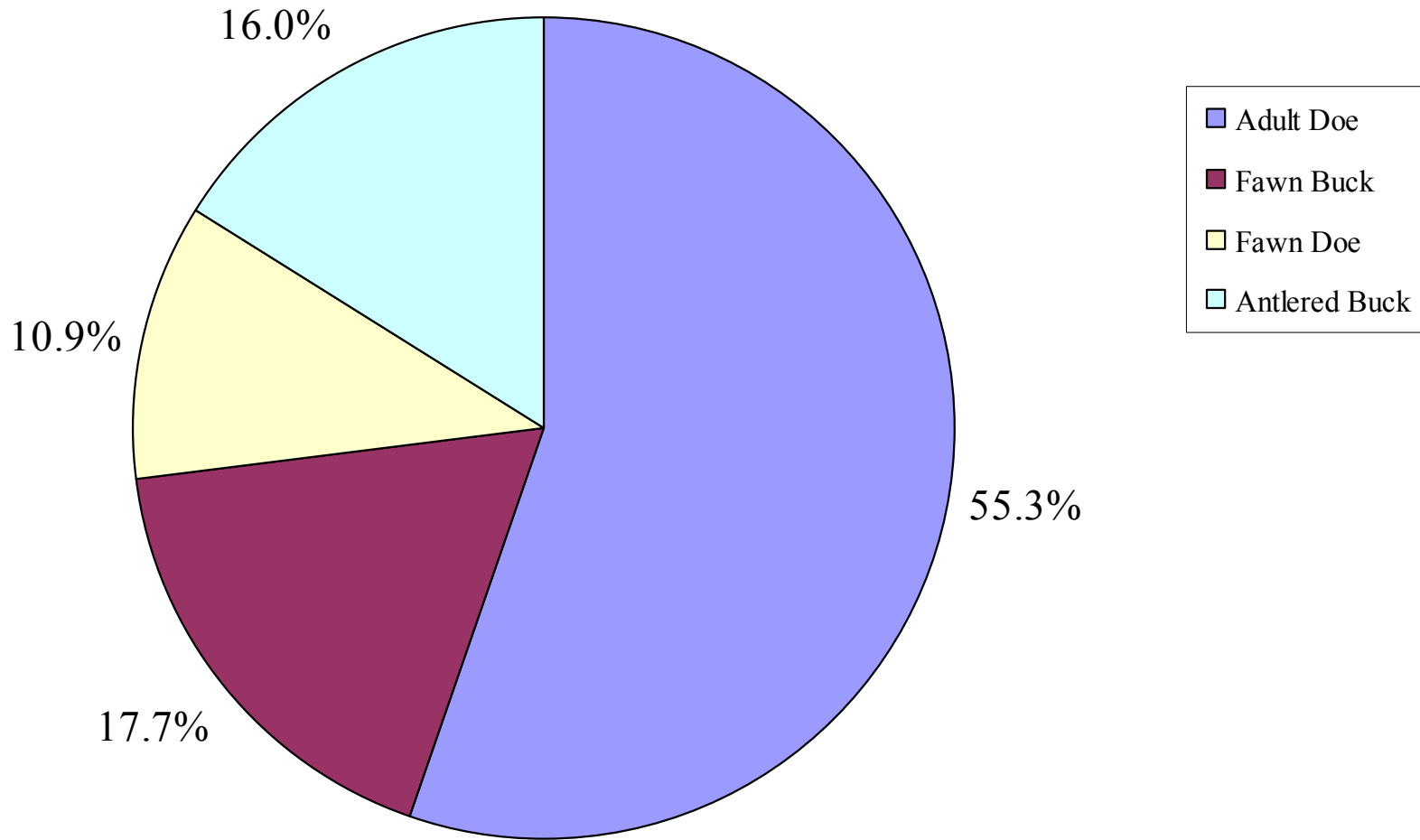
# 2008 Results

- No additional acreage (save for 3 Hot Spots)
- 289 Hunters placed (2 removed early)
- 533 Deer Harvested (457♀, 75♂)
- 1.84 Deer / Hunter
  - Only 0.26 Bucks / hunter
- 17.0 deer / mile<sup>2</sup> harvested
  - 16.7 without Hot Spot stats

# 2009 Results

- Approx 300 acres added to DHA 1 (plus an increase in number of Hot Spots)
- 316 Hunters placed
- 586 Deer Harvested (492♀, 94♂)
- 1.85 Deer / Hunter
  - Only 0.30 Bucks / hunter
- 18.4 deer / mile<sup>2</sup> harvested
  - 17.8 without Hot Spot stats

# Harvest by Animal Type



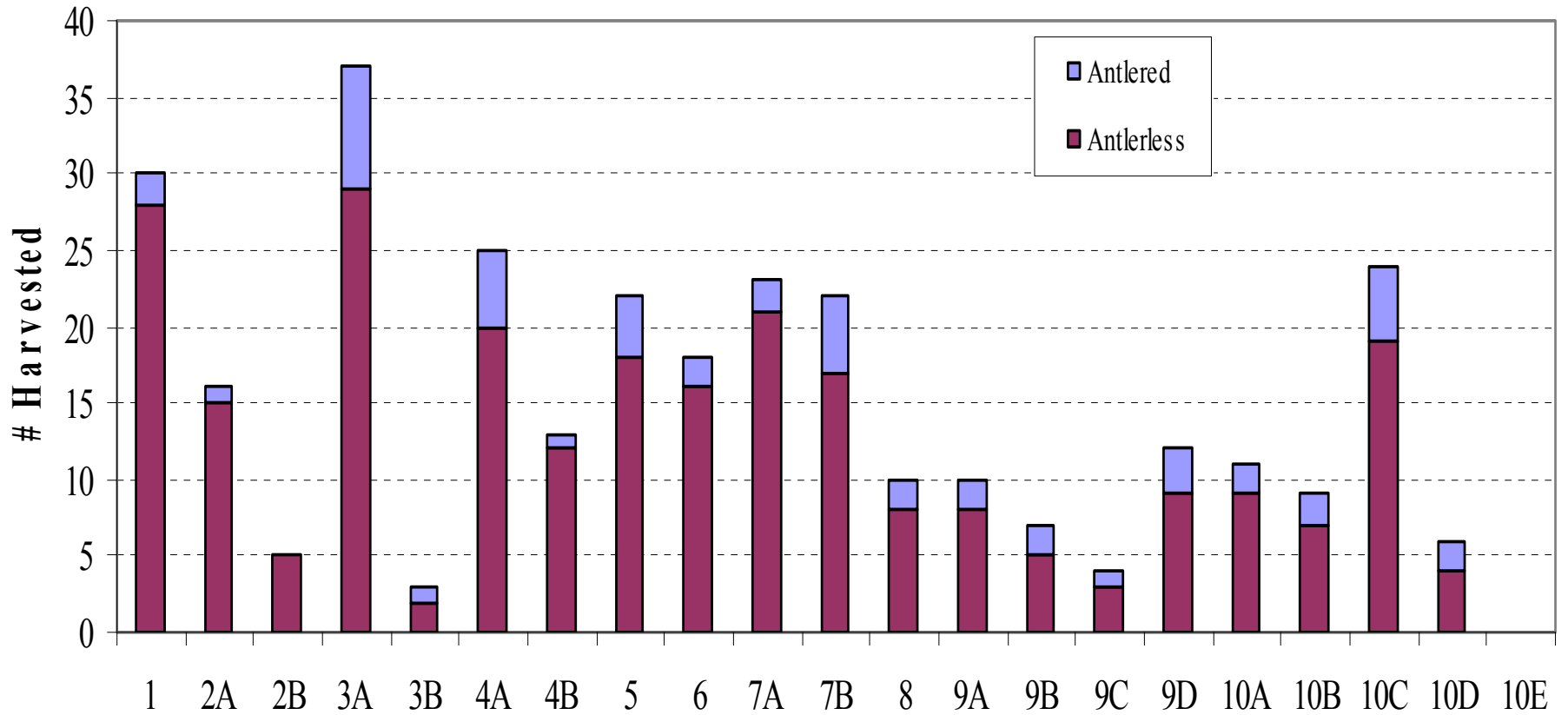
16% Bucks

84% Antlerless

# Breakdown of Antlerless

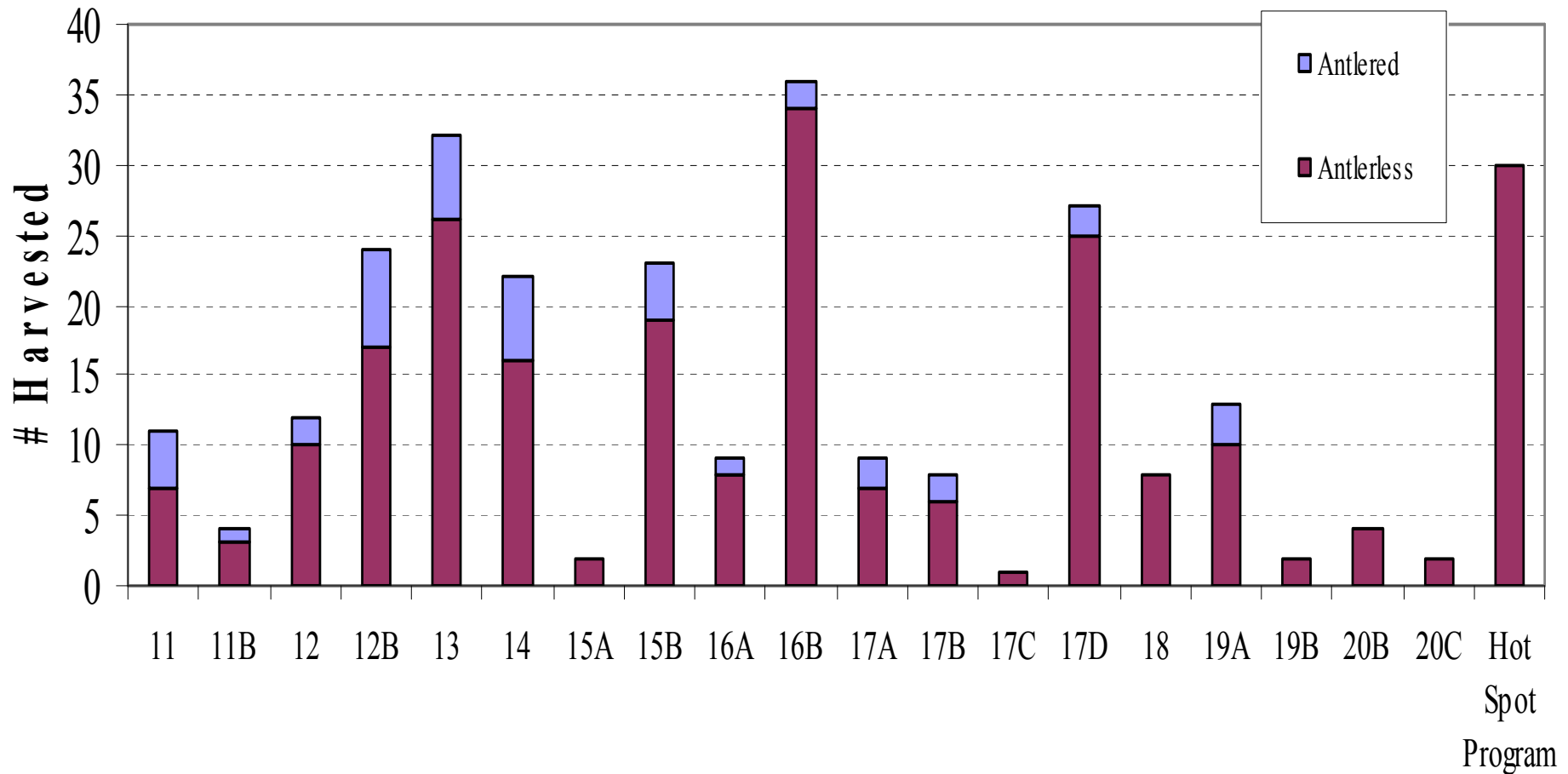
- 492 Antlerless deer harvested in 2009
  - 64 Doe fawns
  - 104 Buck fawns
  - 324 Adult does

## Total Harvest by DHA

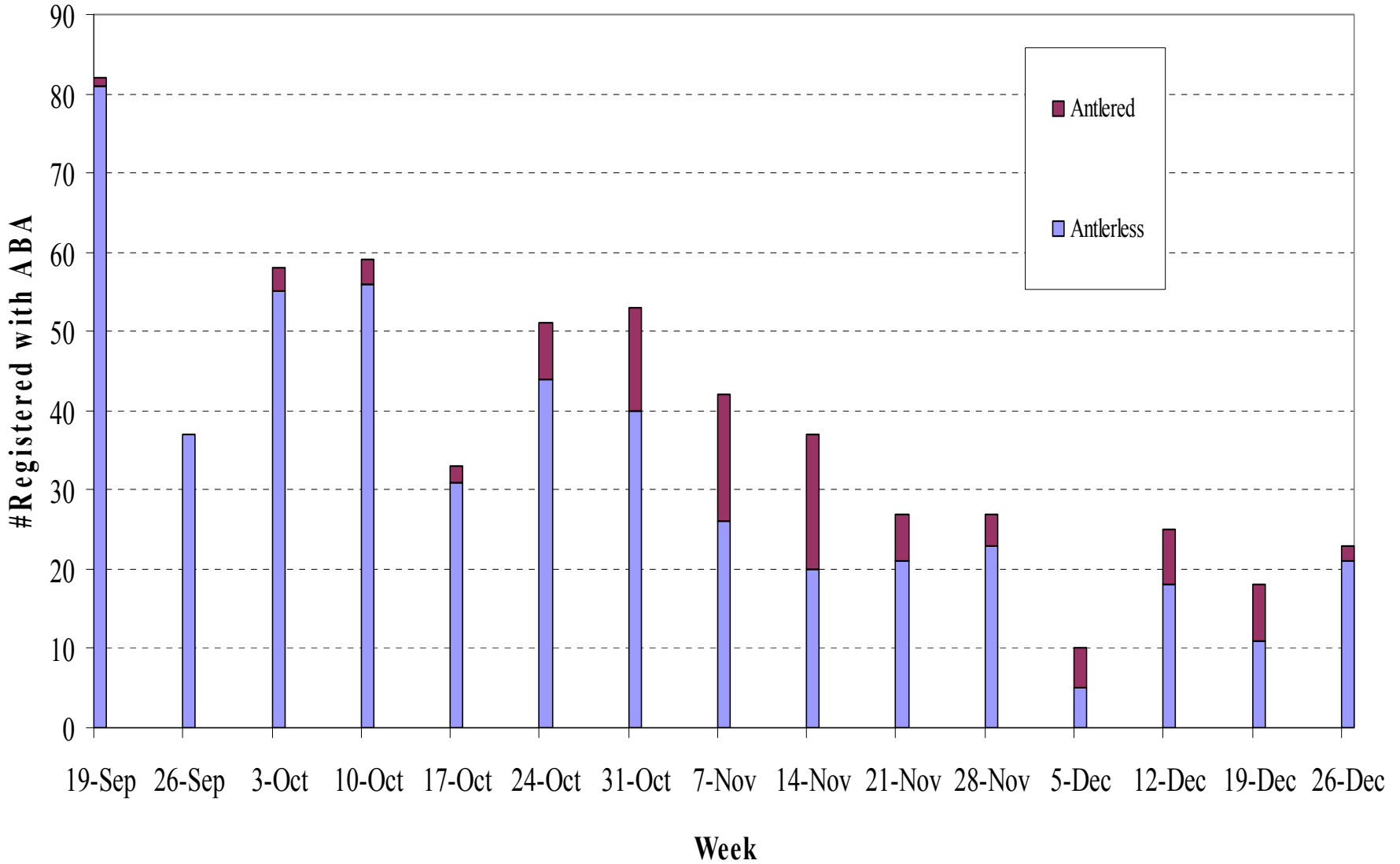


# Total Harvest by DHA, part 2

## Total Harvest by DHA



# Weekly Harvest



# General Stats

	2009	5-year Average
Total Harvest/Hunter	1.85	1.90
Buck Harvest / Hunter	0.30	0.30
Anterless Harvest / Hunter	1.56	1.60
Harvest / Successful Hunters	2.38	2.37
Buck Harvest / Successful Hunter	0.38	0.37
Anterless Harvest / Successful Hunter	2.00	1.99

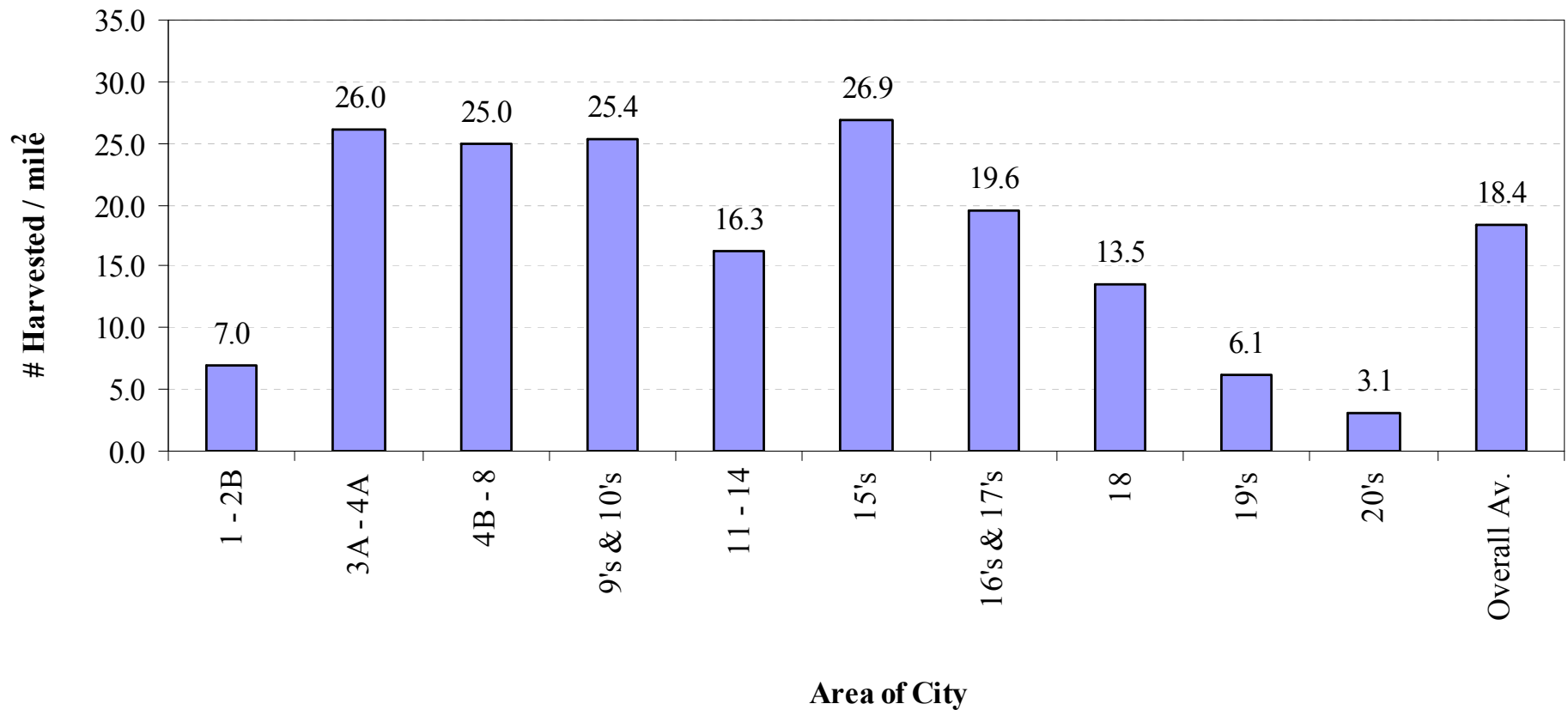
# General Stats, cont.

In the previous table, the Totals / Hunter include all registered hunters. This includes all of the hunters that failed to harvest any deer. Not knowing whether this was the result of not spending much time in the woods, or not even getting into the woods is unknown to me. Thus, I removed all of the zero-harvest hunters, and reported harvest / successful hunter. That is the difference between those two stats. And in reality, there is no real difference between those two stats.

I think these summary stats speak volumes. Average MN bow hunter shoots one deer every 7 - 8 years (0.13 deer / year). Average Duluth bowhunter shoots 0.30 bucks / year, but shoots 1.60 antlerless deer / year.

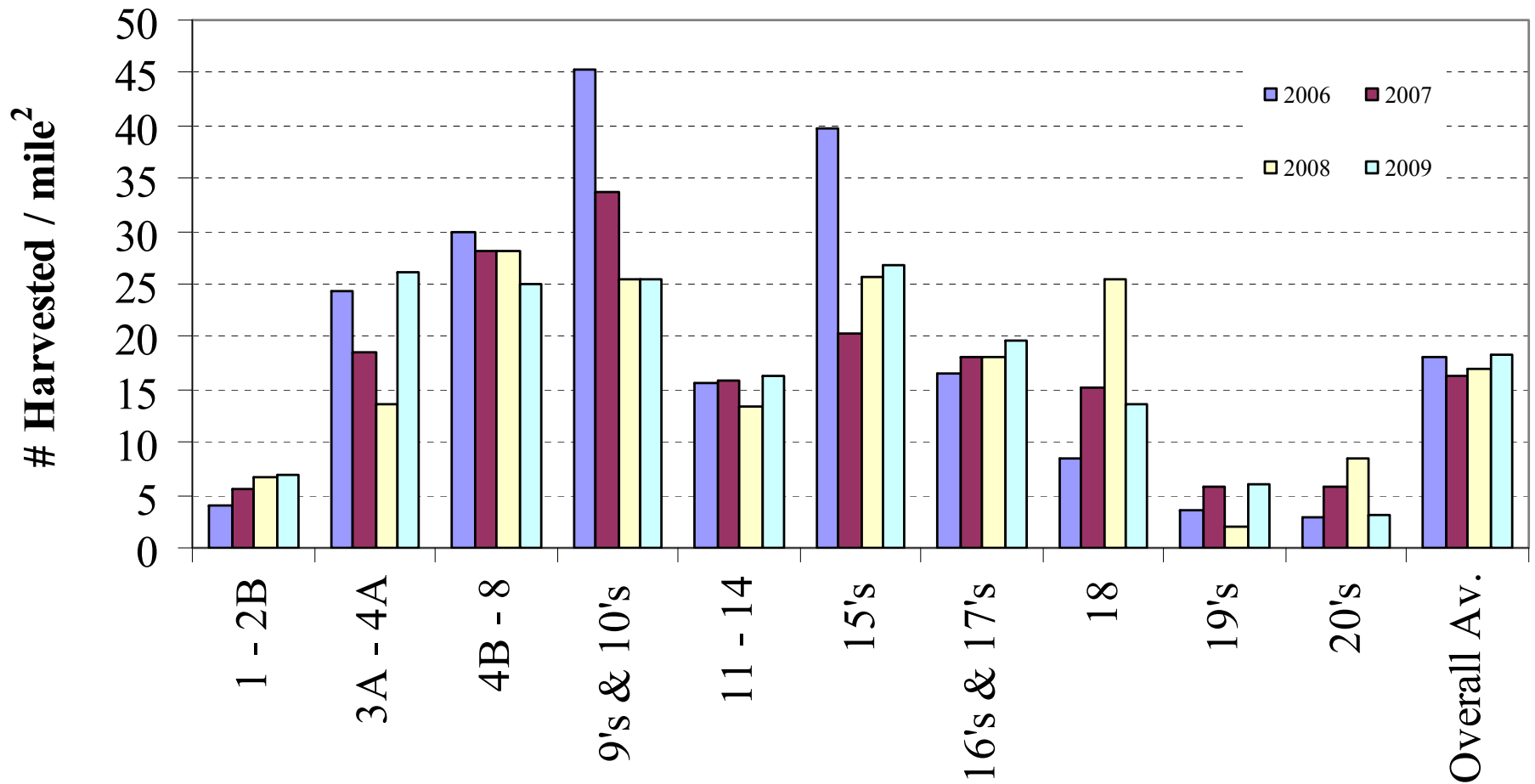
Successful hunters shot 0.37 bucks / year over the last five years in Duluth. Successful hunters shot 1.99 antlerless / year over the last five years in Duluth, well above the MN average.

# 2009 Harvest per square mile



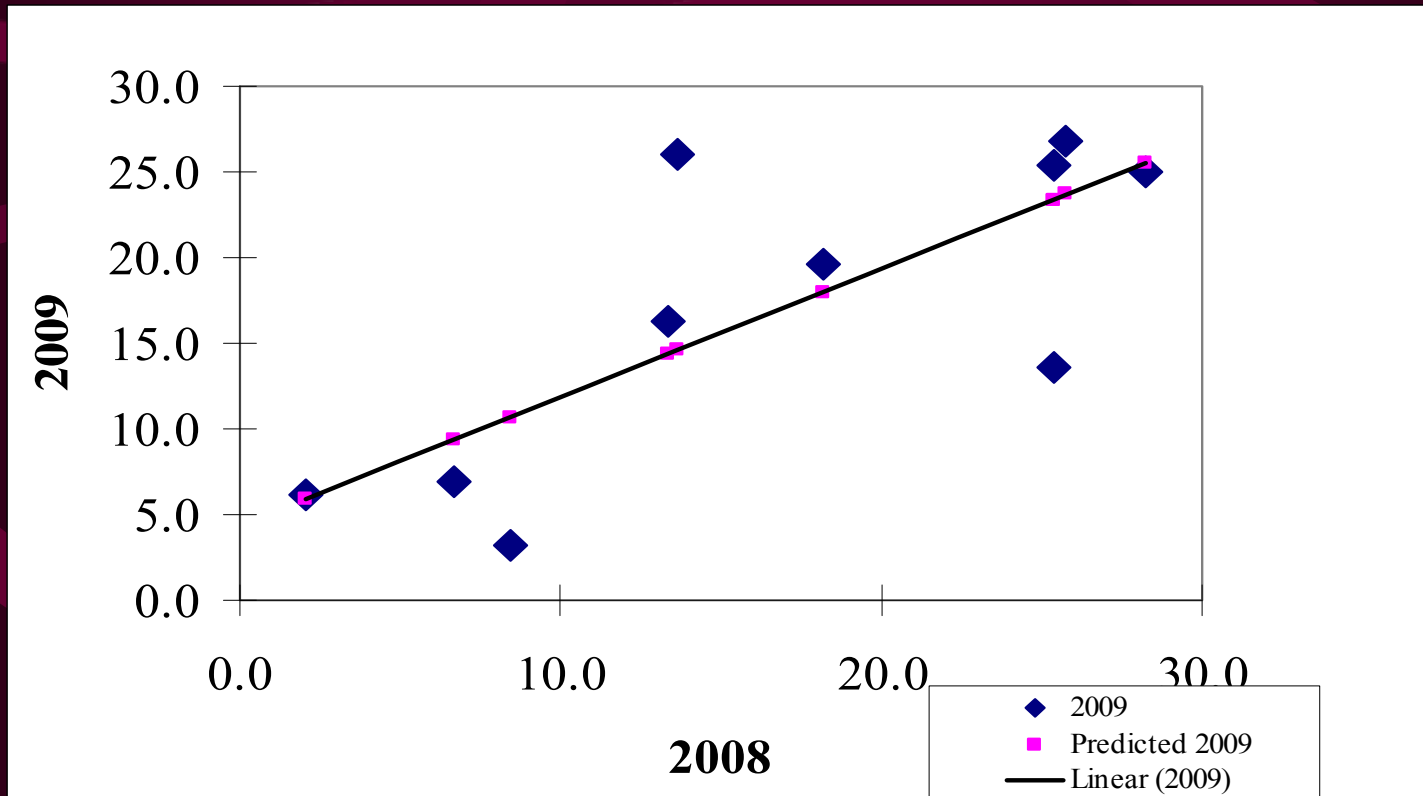
# Harvest / mile<sup>2</sup>

## Last four Seasons

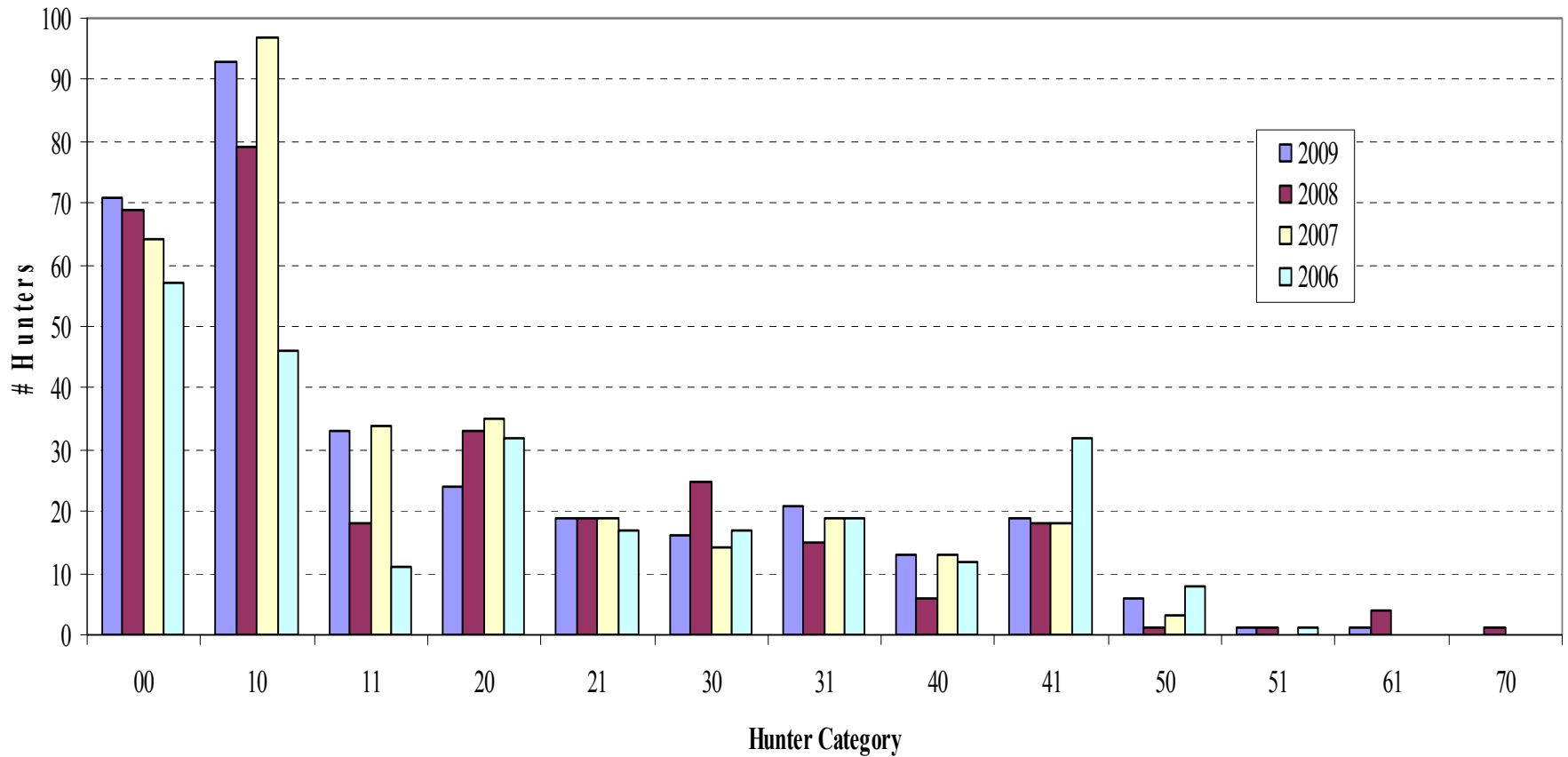


## Deer / mile<sup>2</sup> across DHAs, Residual Analysis (observed vs. predicted)

- No pattern in observed 2009 vs. predicted from 2008
- Suggested no overarching differences in harvest densities across all DHAs
- May be local differences in some of the DHAs

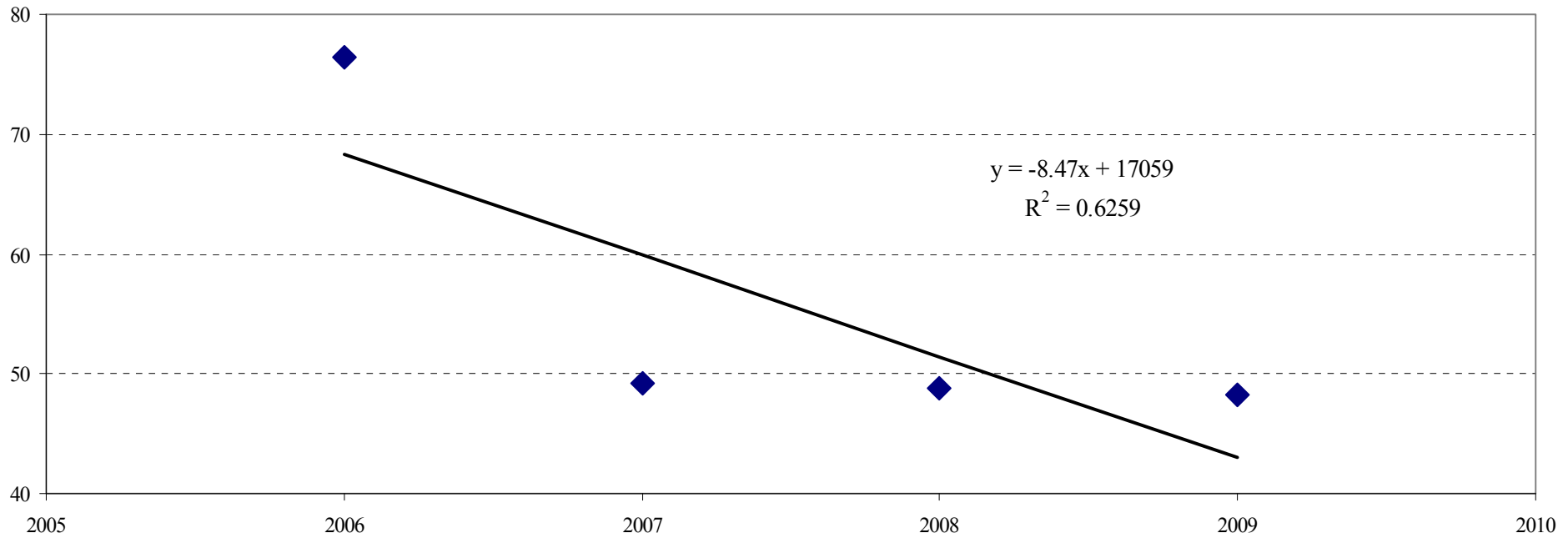


## Hunter Harvest, Last Four Years



- Hunter Category is a two part designation
- 10 means the hunter shot one antlerless, no bucks
- 11 means the hunter shot one antlerless and one buck
- 31 means the hunter shot three antlerless and one buck

## % Hunters Harvesting two or more deer / year



- In 2006, 76.4% of hunters shot two or more deer
- In 2007, 49.2% shot two or more deer
- In 2008, 48.3% shot 2 or more deer
- In 2009, 48.3% shot 2 or more deer
- Getting harder to shoot deer in Duluth?

# Year End Survey

- 199 Responses (out of 316 hunters)
  - Much better than the 44.2% of 2008
  - But still?? Is it really so hard to humor the ABA Board?
- Response rate of 63.0%
  - Shame on all of you that ignored me multiple times!
- Looking at harvest rates vs. responses, data suggests that if a hunter failed to shoot a deer in 2009, they ignored my Year End Survey.

# Wounding Rates

- 59 deer were actually reported wounded
  - 37 of those just received haircuts
- Wounding rate of **10.9%** in 2009
  - (14.6% in 2008)
- Removing deer with reported haircuts:
  - Wounding rate of 4.1%
- *Actual expanded number of wounded deer would be expected to be closer to 71, based upon the Year End Survey*

# Public vs. Private Lands

- 54.9% of harvest from Public Lands
- 45.1% of harvest from Private Land
- 257 Different properties registered in 2009
- 93 Hunters turned in LOPs (121 in 2008)
  - Board knows of some hunters that never filled in the on-line registration form.
- Demonstrates importance of forging positive relationships with Duluth property owners!

# Returning vs. New Hunters

- 203 of 235 Returning Hunters Harvested:
  - 420 Antlerless
  - 76 Antlered
  - 86.4% of Returning Hunters registered a deer
- 42 of 81 New Hunters Harvested:
  - 72 Antlerless
  - 18 Antlered
  - 51.8% of New Hunters registered a deer

# Local vs. Non-Local Hunters

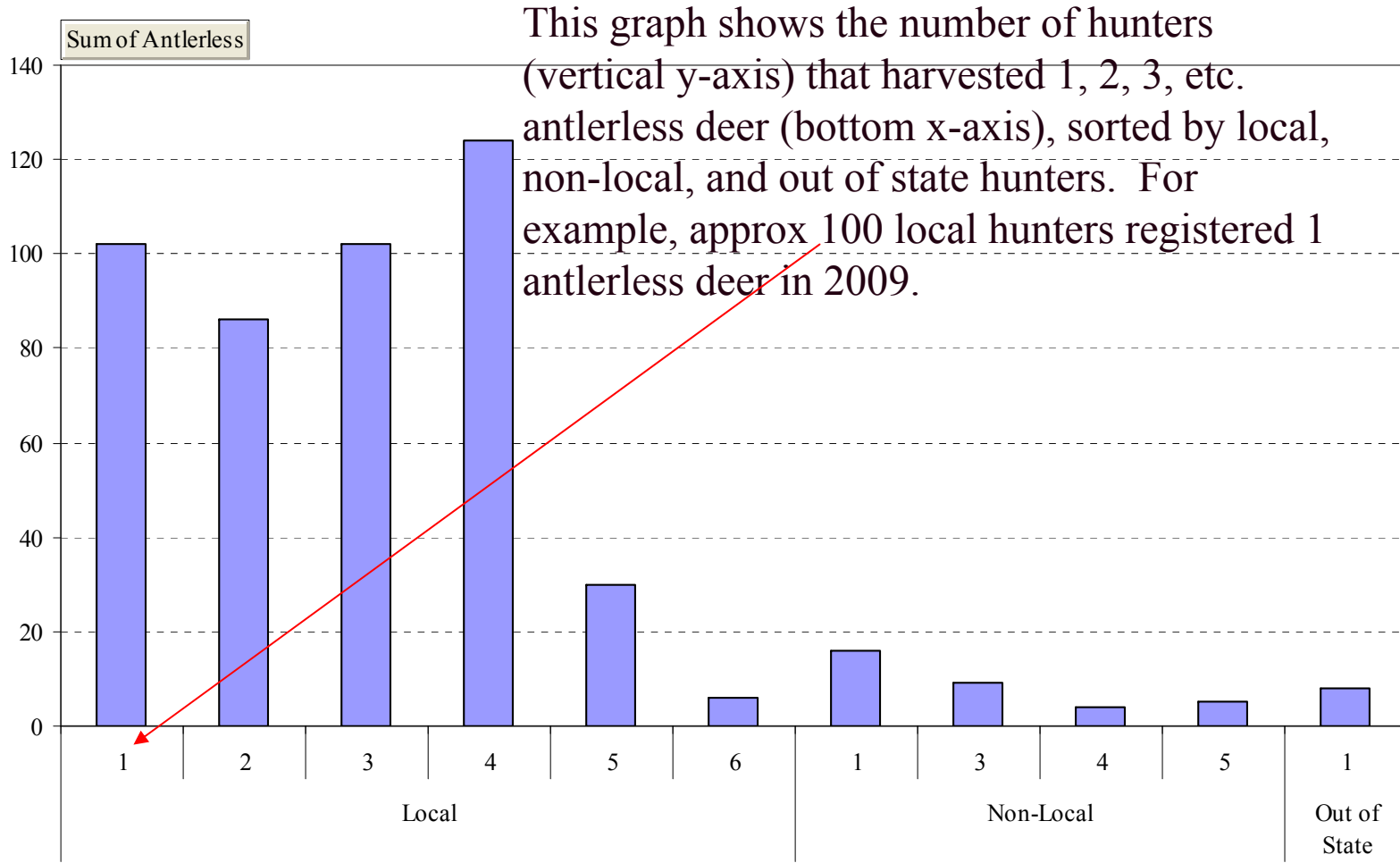
	# Participating in 2009	# Antlerless
Locals	274	450
Non-Local MN	29	34
Out-of-Staters	13	8

# Local vs. Non-Local Hunters

- Non-locals accounted for 9.1% of the hunters (N=29), and 7.0% of the harvest
- Out-of-Staters accounted for 4.1% of the hunters (N=13) and 2.2% of the harvest
- Locals harvested 91.5% of does (N=450)
- Locals harvested 87.2% of bucks (N = 82)
- Non-locals harvested 6.9% of does (N=34)
- Non-locals harvested 7.4% of bucks (N=7)
- Out-of-Staters harvested 1.6% of does (N=8)
- Out-of-Staters harvested 5.3% of bucks (N=5)
- *Non-locals are hunters living further than Floodwood, e.g. Brainerd, Twin Cities*

Drop Page Fields Here

Total

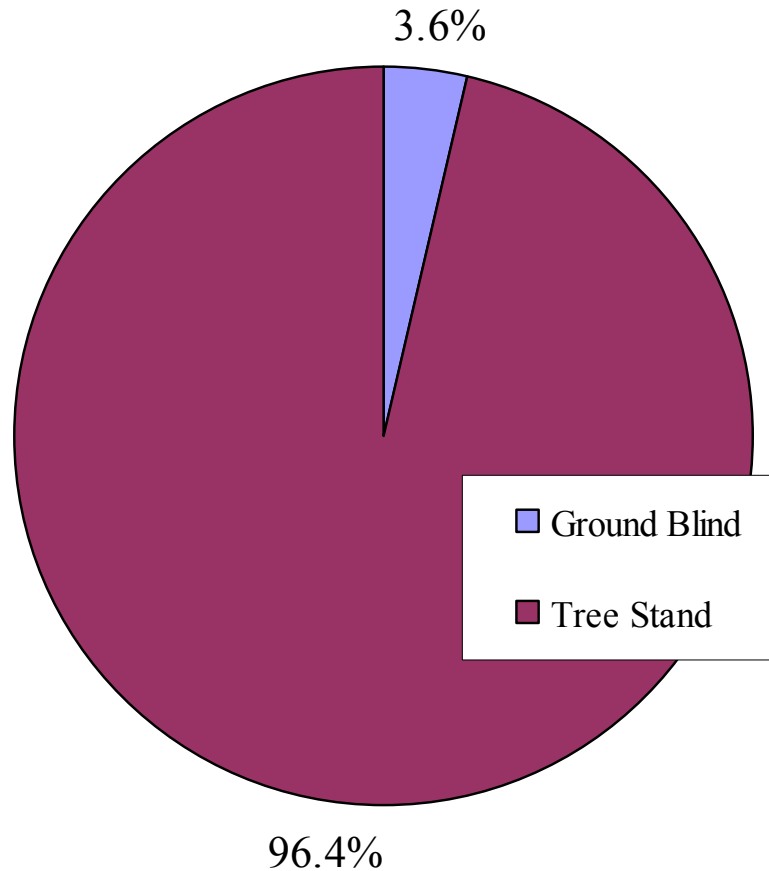


Drop Series Fields Here

Total

Hunter Type Antlerless

# Harvest from Tree Stands vs. Ground Blinds



Many asked for ground blinds, few used them

Zero incidents reported. Thank you for staying safe!!

# Early Season Tags

- 20 Deer were registered using the special Early Season Antlerless Tags
  - 23 in 2008
- Have no idea how many were purchased and not used
- Likely low harvest due to ugly weather that weekend (rain and wind!)

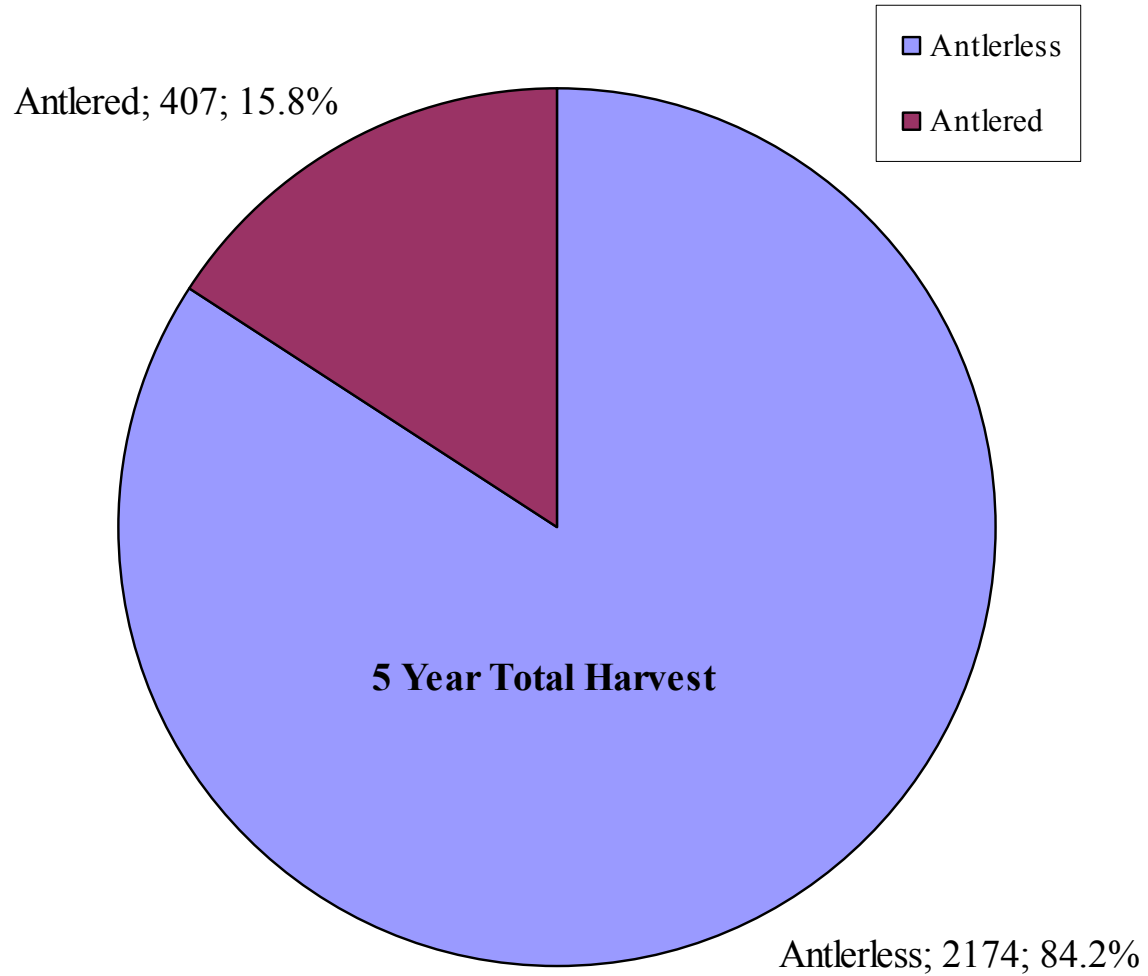
# Venison Donation

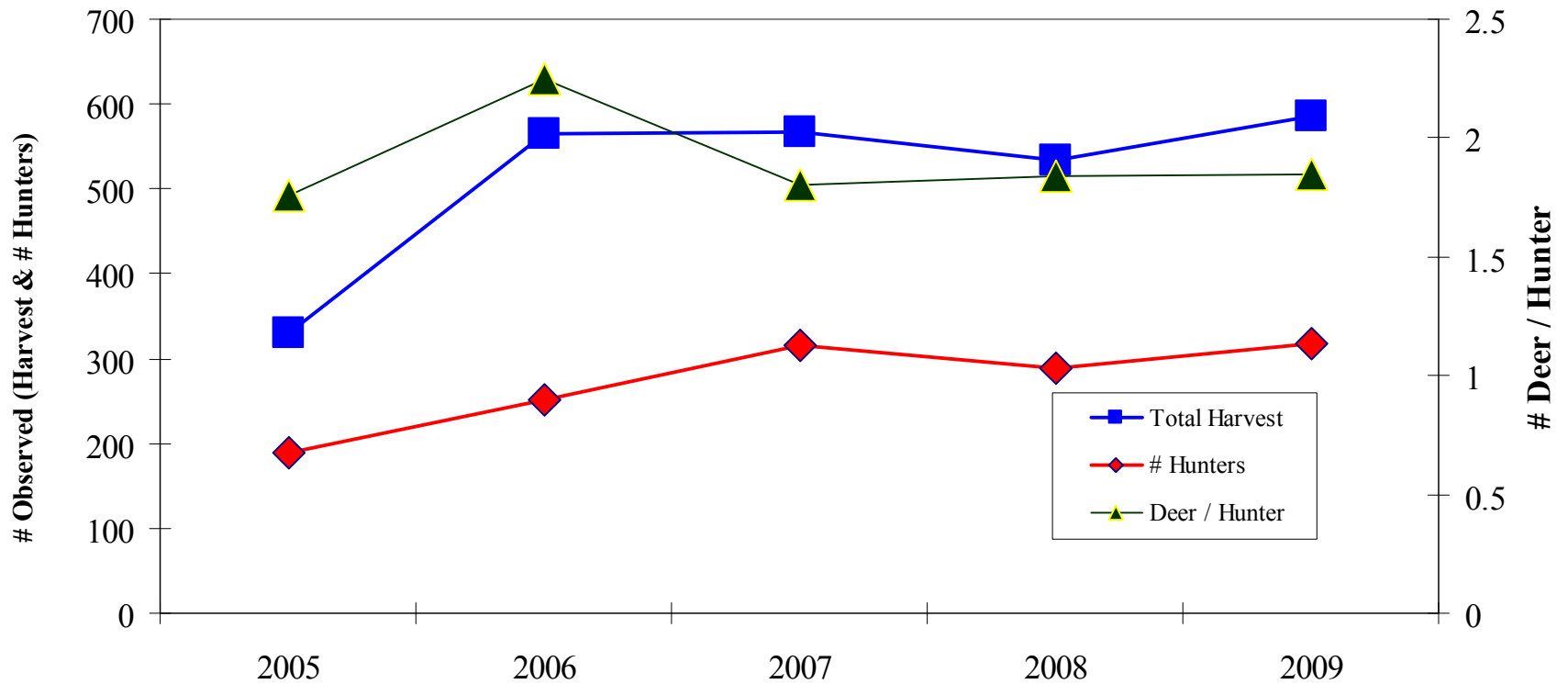
- 304 harvested deer were reported as “Donated”
  - Includes Food Shelf, friends, family, etc.
- All or part of 51.9% of harvested deer were donated.

# Lottery Results

- **72.8%** of Returning Hunters received their 1<sup>st</sup> Choice DHA!
  - 171 hunters (out of 235 Returning Hunters) got their first choice!
  - 10.6% received 2<sup>nd</sup> Choice DHA
  - 83.4% of Returning Hunters got to hunt where they wanted to!
  - Hard to argue that the system isn't working well!

# Harvest Summary 2005 - 2009





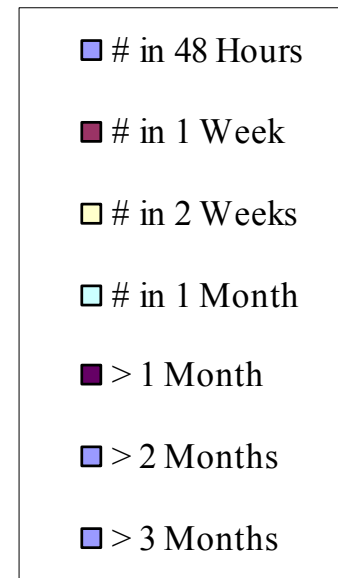
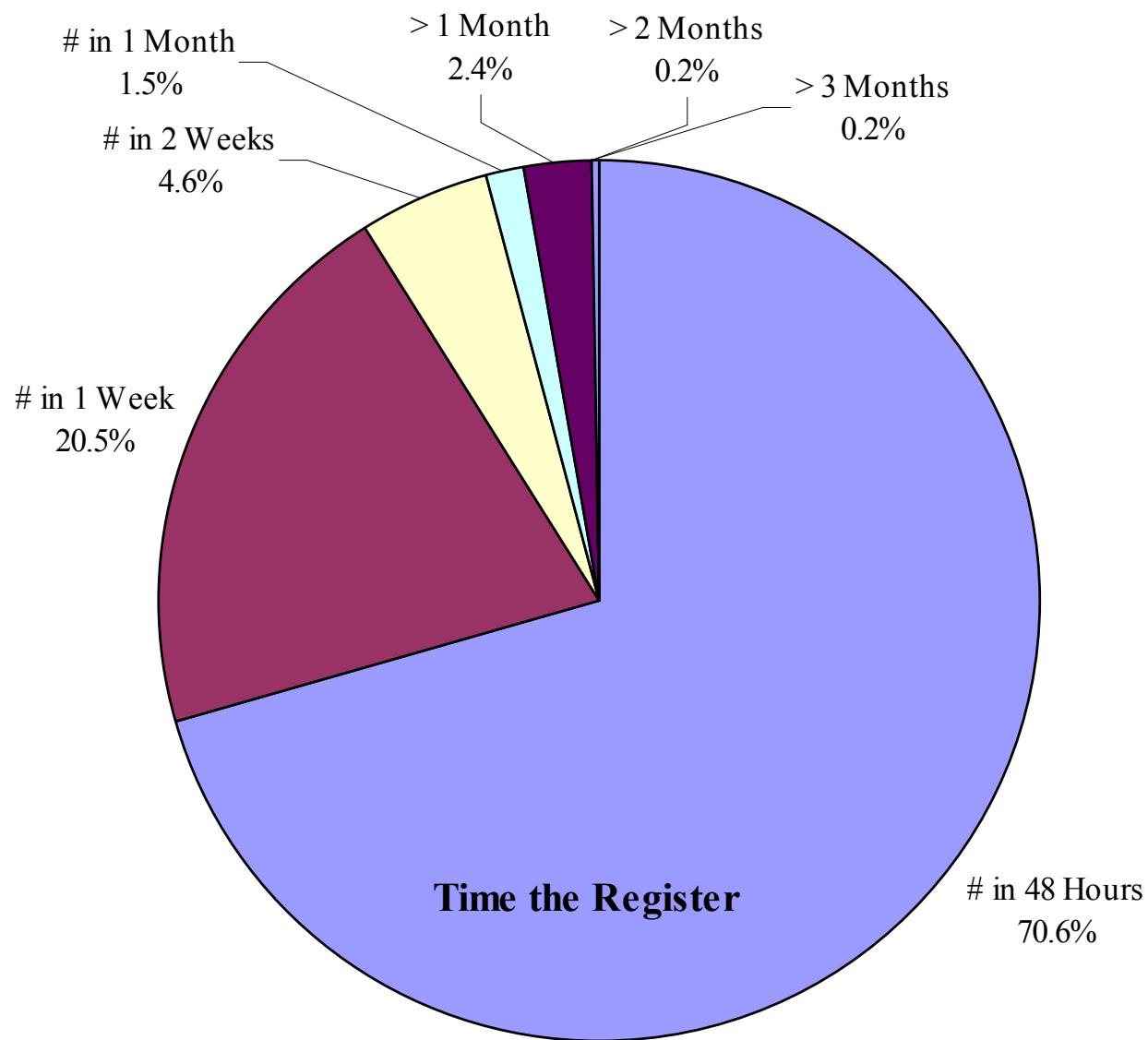
- Harvest essentially same since 2006, maybe a tad up in 2009
- # deer / hunter stable at 1.9
- # Hunters highest to date, a bit higher than the 300 cap.

# Compared to State Average

- Duluth Bowhunt saw an increase in hunter participation
- Harvest / Hunter remained unchanged, however
- Total Duluth harvest **up 9.9%** from 2008
  
- Total Statewide deer harvest **down 14%** from 2008
- Statewide Archery harvest **down 11%** from 2008
  - **20,200** total deer harvested by archery in MN 2009
  - **2.9%** of 2009 state archery harvest came from Duluth
  
- Not a bad showing by Duluth Bowhunters!

# Mandatory Registration

- Rules Manual states that hunters have 48 hours to register their harvest.
- How'd we do?
- **BAD!!!!!!**
- But **MUCH** better than in 2008!



- 70.6% deer registered within 48 hours.
  - Up from 60.2% in 2008. So, Thank You!
- I can live with the 20.5% that did so within 1 week
- What makes my job so difficult is the 4.3% of you that waited a month or more!
  - 16 deer registered > 30 days late!
  - Only 2 deer registered > 90 days late!!! (10 in 2008)
  - 16 deer not registered until HCs called to remind!
    - Down from 35 in 2008
    - That's encouraging!

And you can't claim you didn't know since I sent summaries every two weeks.  
All you can claim is that you don't care all that much.

# More Year End Survey Results

- 48.7% of hunters reported hunting elsewhere
  - Reasons ranged from better hunting elsewhere, to sharing hunting time with family / friends, to rifle hunting, to owning property elsewhere.
- All respondents reported that they will apply again in 2010

# More Year End Survey Results

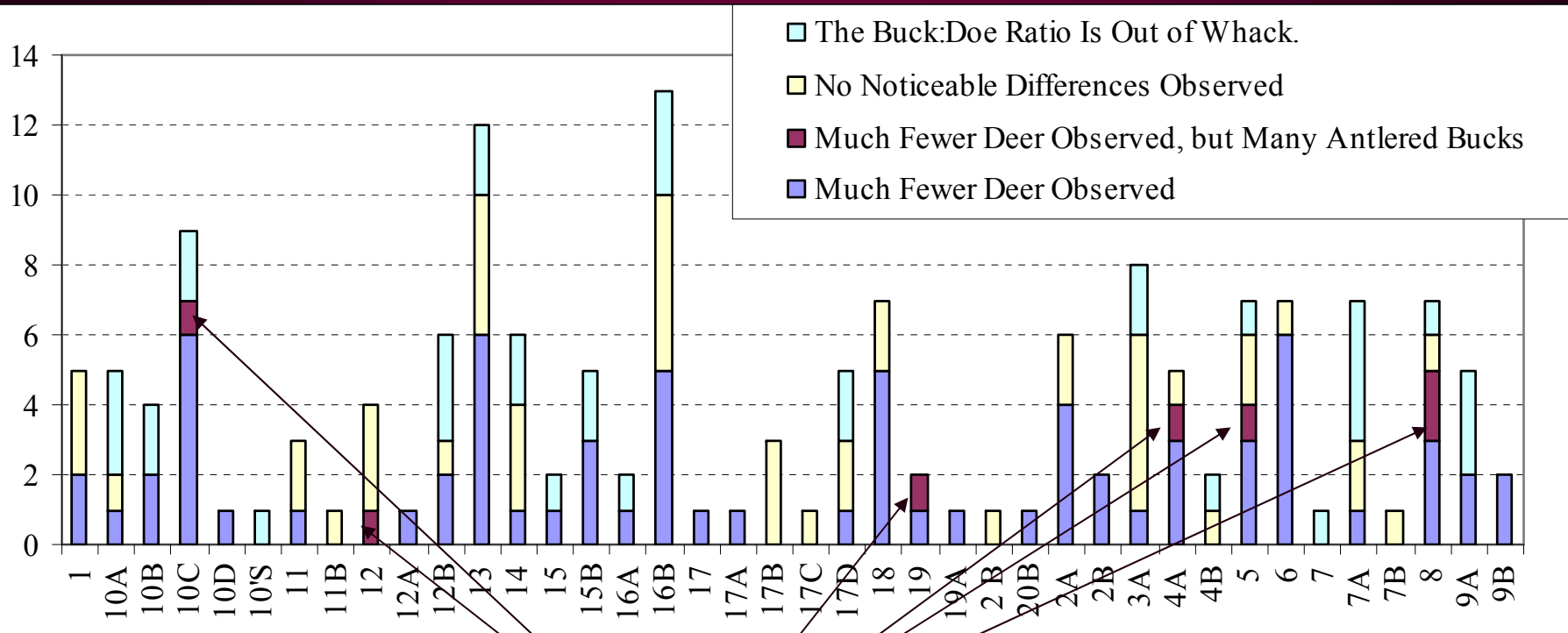
- 63.0% of all hunters filled out survey (199 of 316)
  - 70.6% of returning hunters did (166 of 235)
  - Only 40.7% of new hunters did (33 of 81)
- Respondents reported harvesting 484 deer
  - 82.6% of total harvest
- 90.5 % of respondents reported harvesting.
  - 77.6% of all hunters really did harvest a deer.
- Therefore, if a hunter harvested a deer, they were much more likely to take the 23 seconds required to fill out the Year End Survey

# Observations from a Tree Stand

- Relative to previous years, returning hunters reported the following:
  - 58 reported seeing no differences in deer #s
  - 1 reported seeing no differences, but a higher % of bucks than in years past
  - 29 reported seeing more bucks than does
  - 63 reported seeing fewer deer altogether
  - 8 reported seeing fewer deer, but more bucks than does of those they saw

## Observations from a Deer Stand, cont.

- The following graph shows the results by DHAs reported. Some hunters thought they saw fewer deer in DHA XX, while others reported more bucks than does.
- I'm not sure exactly how to interpret these data, but it's here for you to see how others interpreted their deer stand sits relative to your opinion



For example, those that reported seeing fewer deer, and more bucks than in previous years reported observing this in DHAs 10C, 12, 19, 4A, 5, and 8.

# Questions?

- If they're legitimate questions, ask Bork
- If you just want to vent, please direct that to [infoduluthhunt@gmail.com](mailto:infoduluthhunt@gmail.com)