

Harvest Summary 2007

or . . .

Everything you really didn't want to
know about the Duluth Bowhunt,
and were afraid to ask.

Submitted to ABA Board

By Bork

AKA Data Dude

2005 Results

- **9600 Acres open to hunting**
- **210 Applicants**
 - **189 Hunters Qualified and were Placed**
 - **177 Actually Hunted**
- **331 Deer Harvested (263 ♀, 68 ♂)**
- **1.87 Deer / Hunter**
 - **0.13 / Bowhunter MN Mean**
- **22.1 deer / mile² harvested**
- **Wounding Rate of 7.8%**

2006 Results

- 20,100 Acres open to hunting
- 260 Applicants
 - 251 Placed
 - 195 Reported Harvest
- 564 Deer Harvested (485♀, 79♂)
 - 2.25 deer / hunter (if all hunted)
 - 2.9 deer / successful hunter
- 7.2 % Wounding Rate
- 18.0 deer / mile² harvested

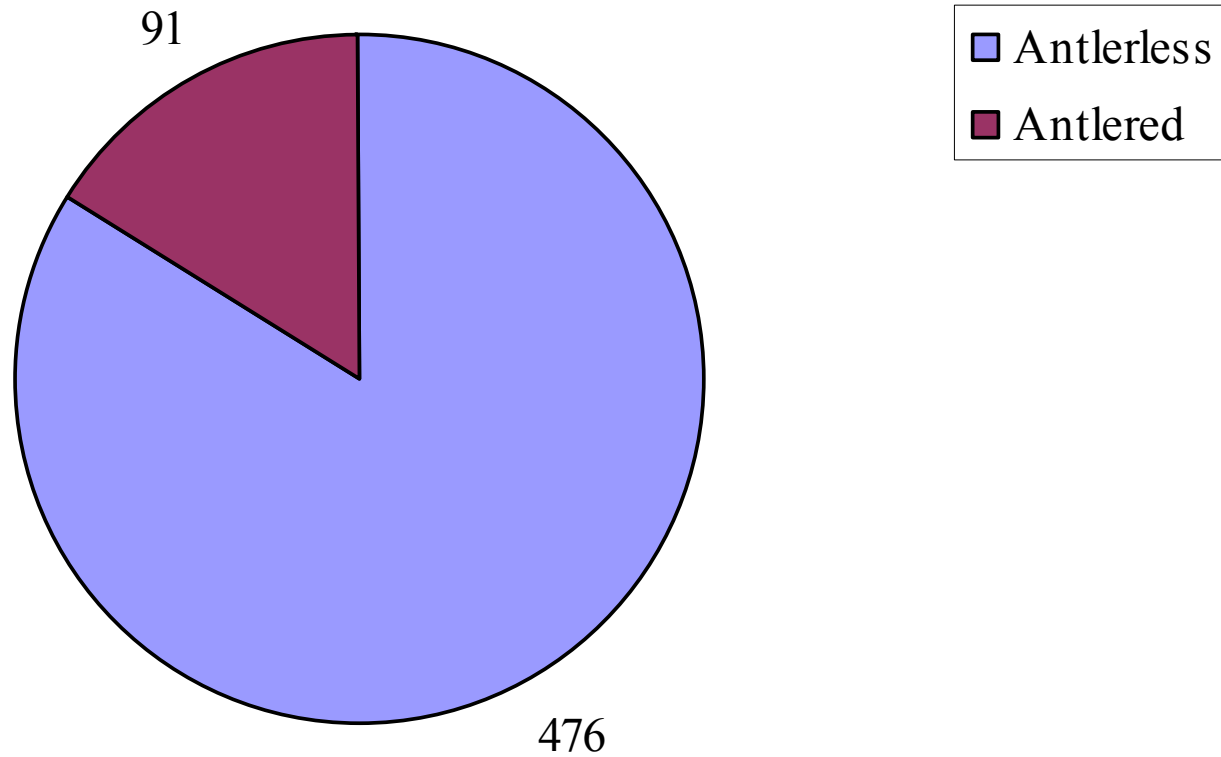
2007 Results

- 22,252 Acres Open to Hunting
- 315 Hunters Placed
- Estimated 310 Actually Hunted
- 567 Deer Harvested (476♀, 91♂)
- 1.8 Deer / hunter
- 16.3 deer / mile² harvested

Year End Survey

- 159 Responses (out of 315 hunters)
- Response rate of 50.5%
 - Shame on all of you that ignored me multiple times!
- Looking at harvest rates, data suggests that if a hunter failed to shoot a deer in 2007, they ignored the Year End Survey.
- Survey results are used throughout the analysis of the 2007 data. Pay attention!

Total Harvest 2007



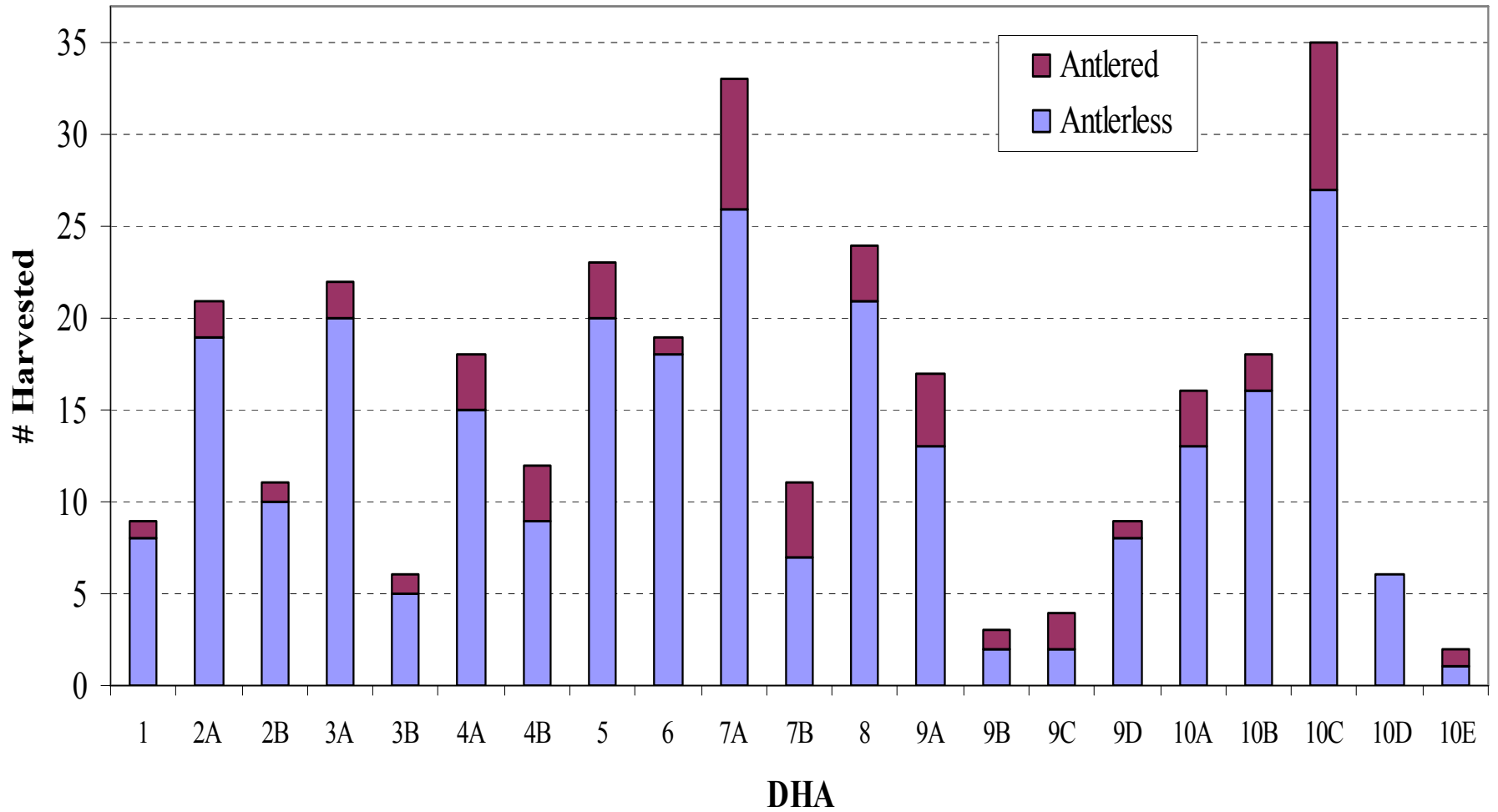
16% Bucks

84% Antlerless

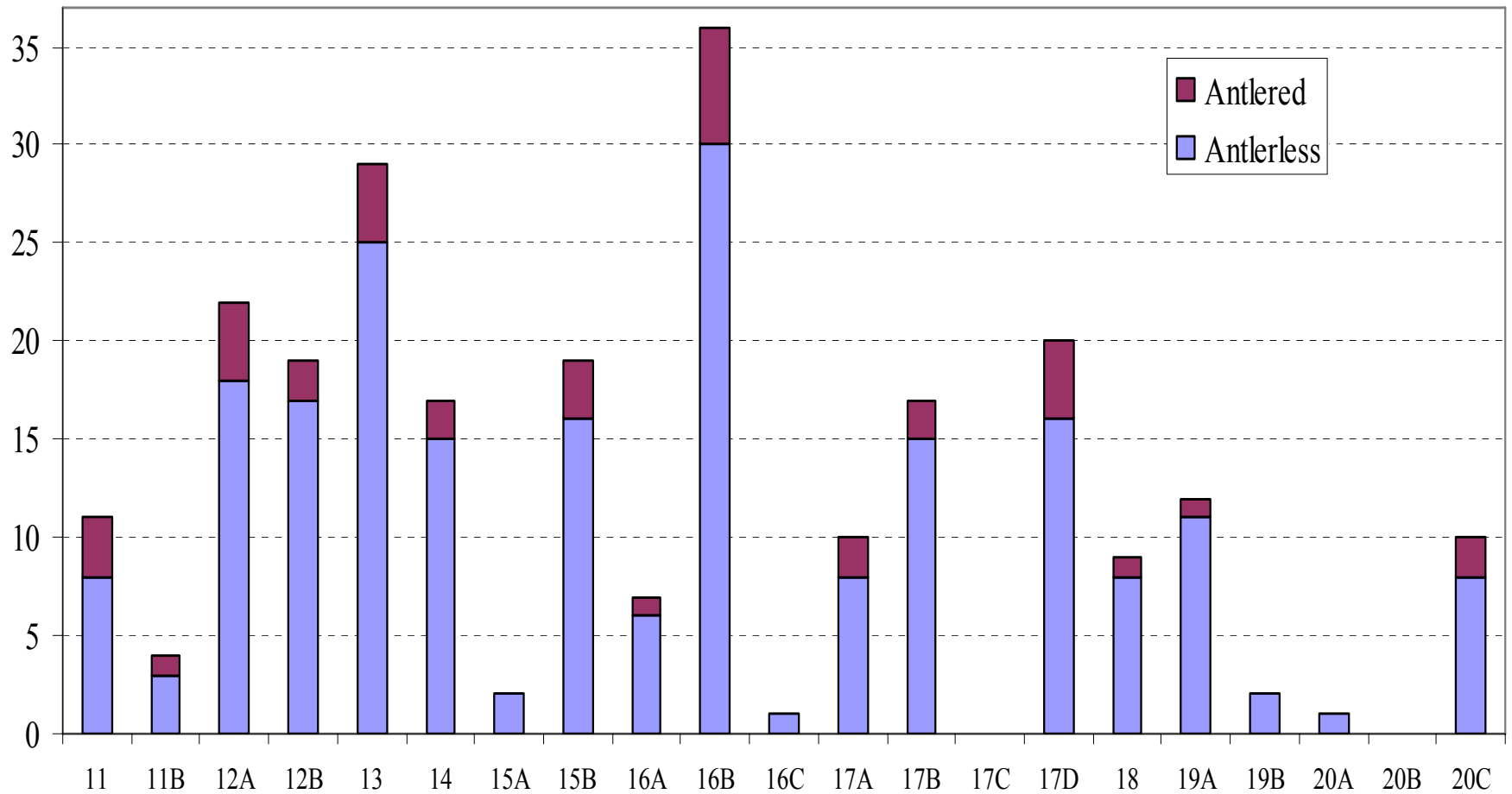
Breakdown of Antlerless

- 476 Antlerless deer harvested in 2007
 - 95 Doe fawns
 - 70 Buck fawns
 - 311 Adult does
- Using expanded distribution from 159 returned year end surveys

Total Harvest by DHA



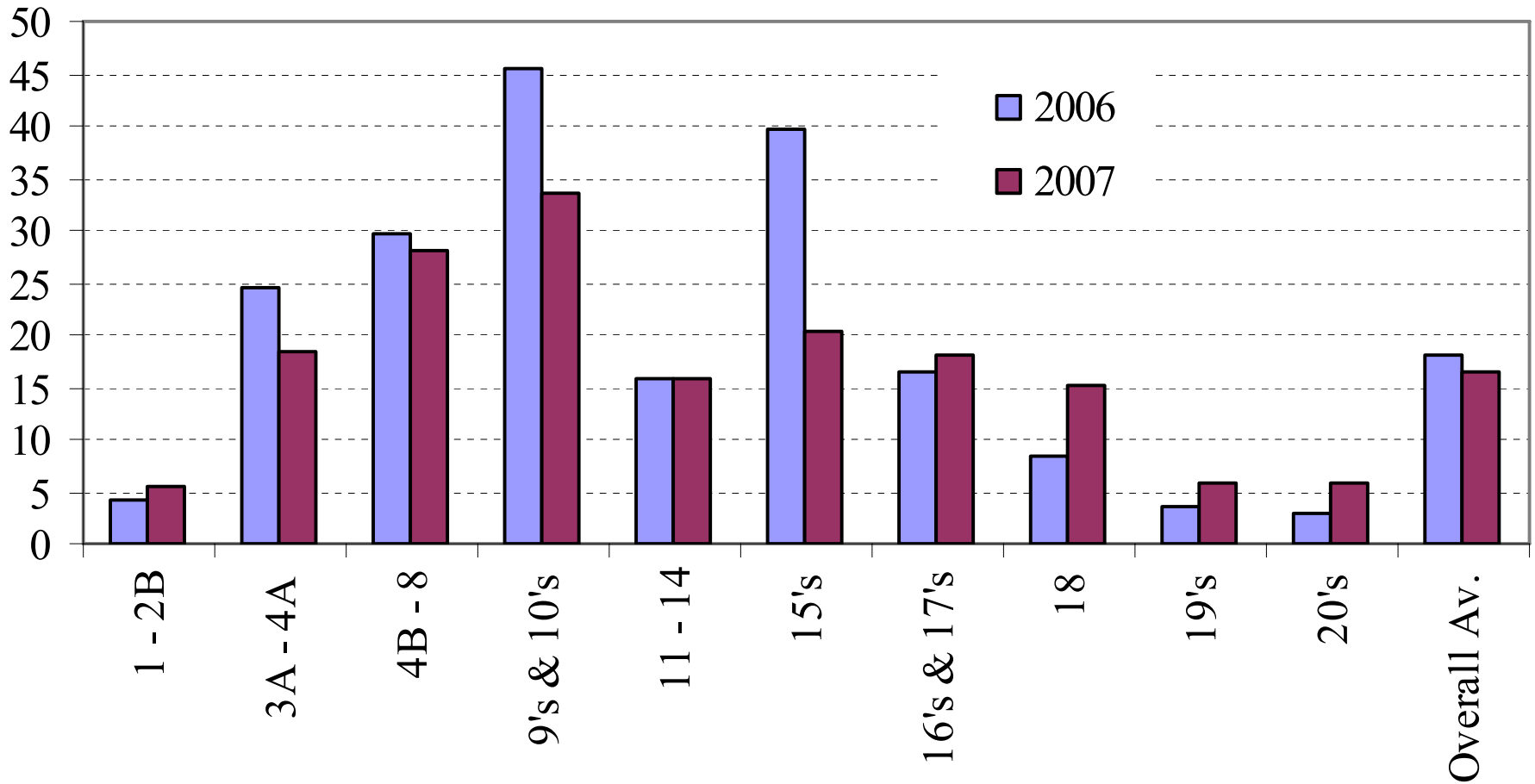
Total Harvest by DHA, part 2



2007 Harvest per square mile



Harvest / mile² 2006 vs. 2007



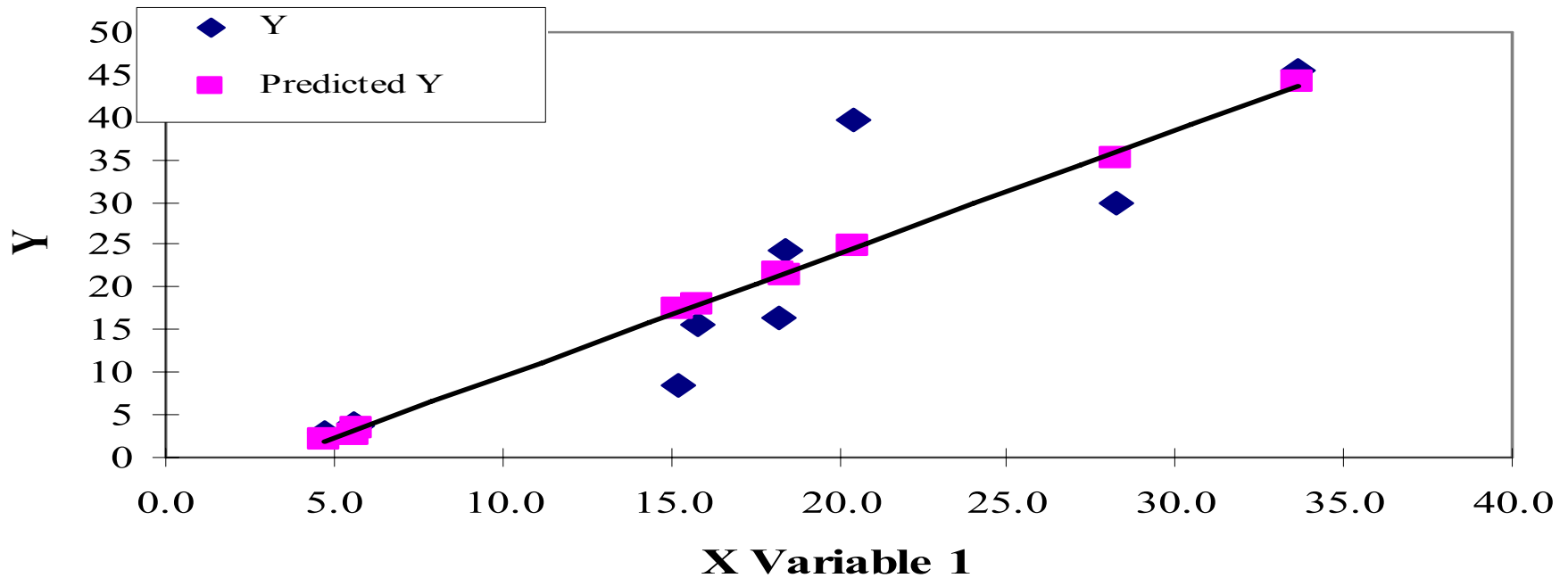
Feel free to go to sleep on this
next slide . . .



4/27/2000 08:57

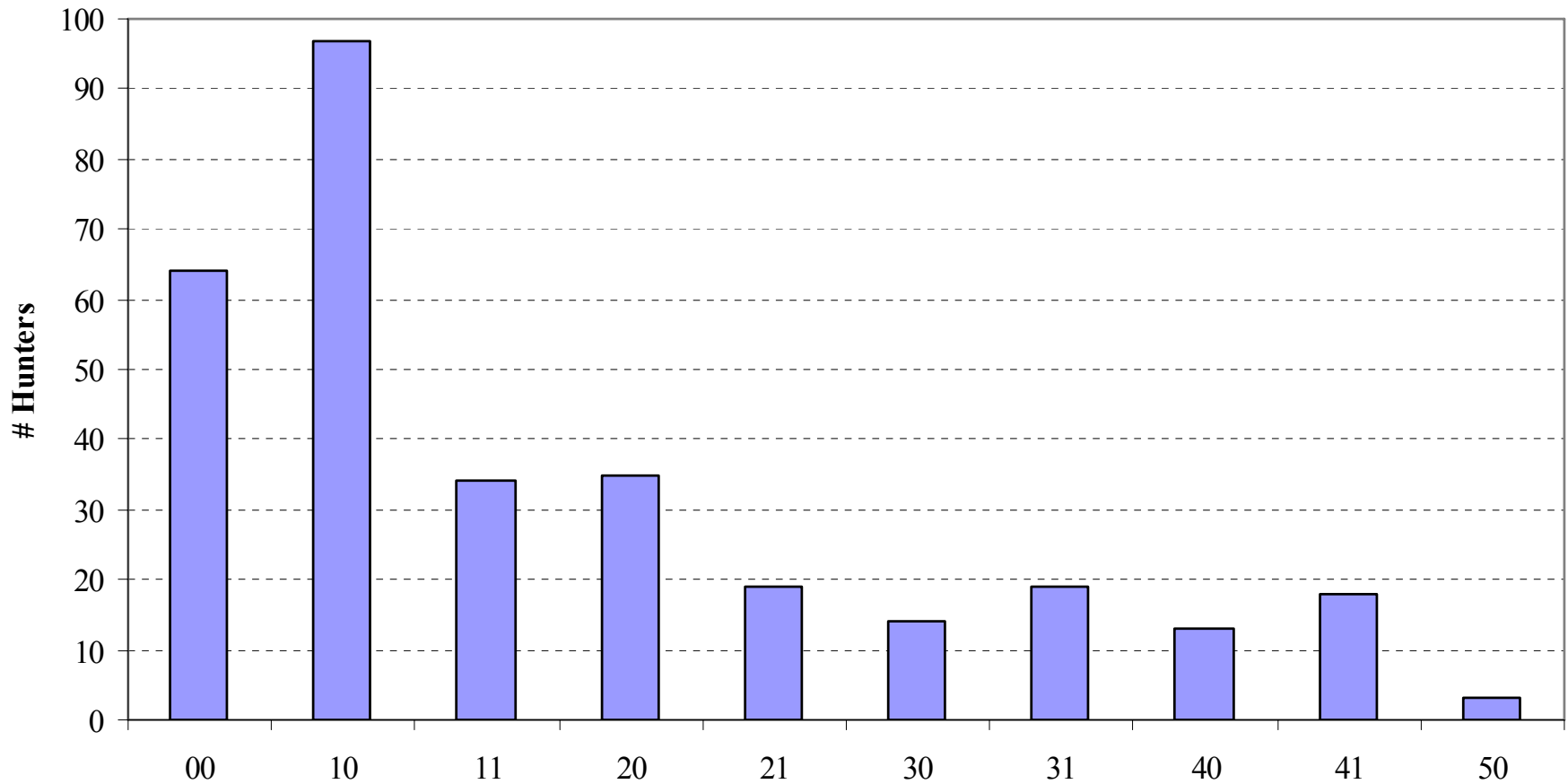
Deer / mile² across DHAs, Residual Analysis (observed vs. predicted)

X Variable 1 Line Fit Plot



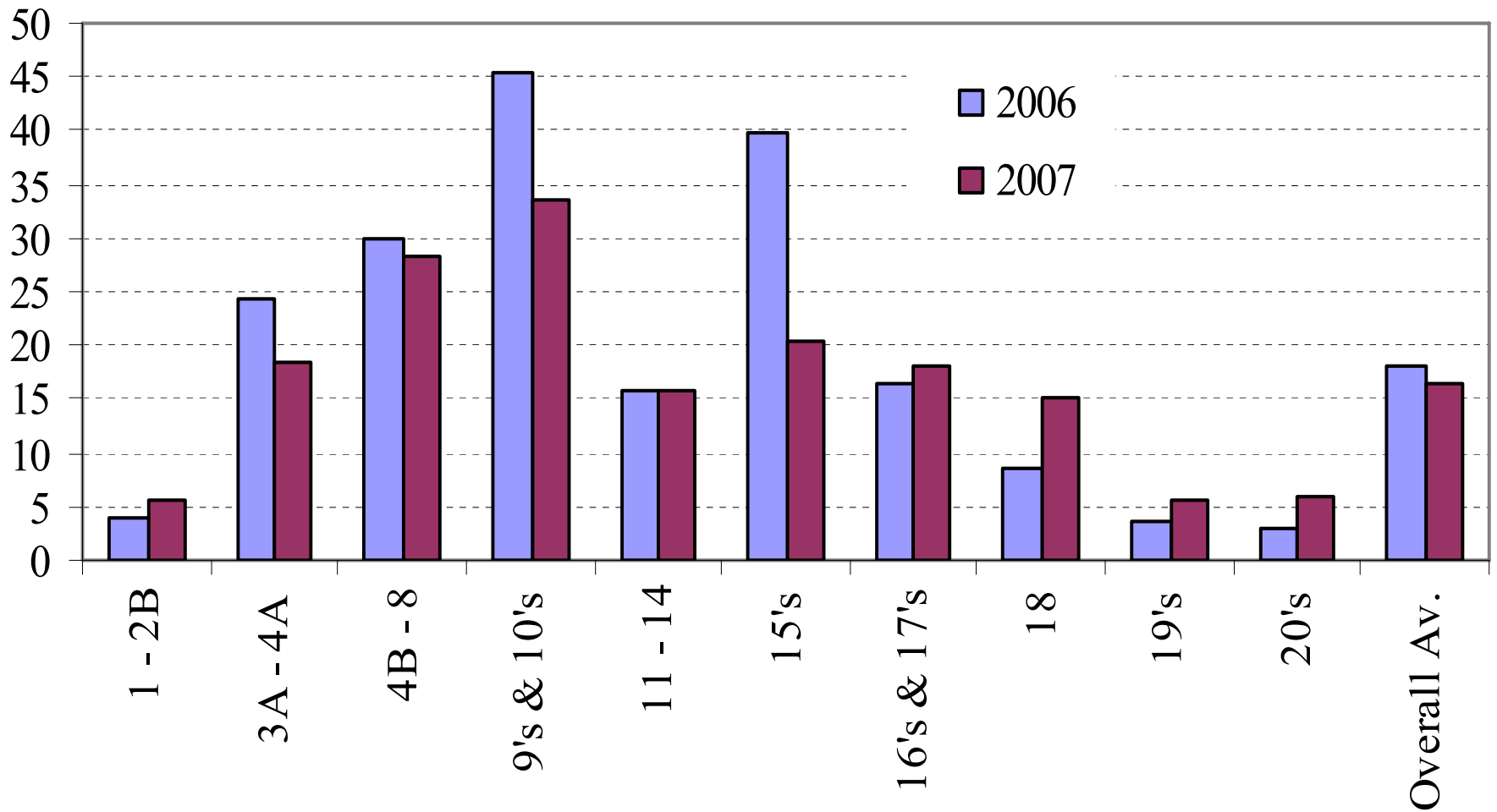
- No pattern to observed 2007 vs. predicted
- Suggested no overarching differences in harvest densities across all DHAs
- May be local differences
- Certainly differences observed from Bork's stands . . .

2007 Hunter Category



- Hunter Category is a two part designation
- 10 means the hunter shot one antlerless, no bucks
- 11 means the hunter shot one antlerless and one buck
- 31 means the hunter shot three antlerless and one buck

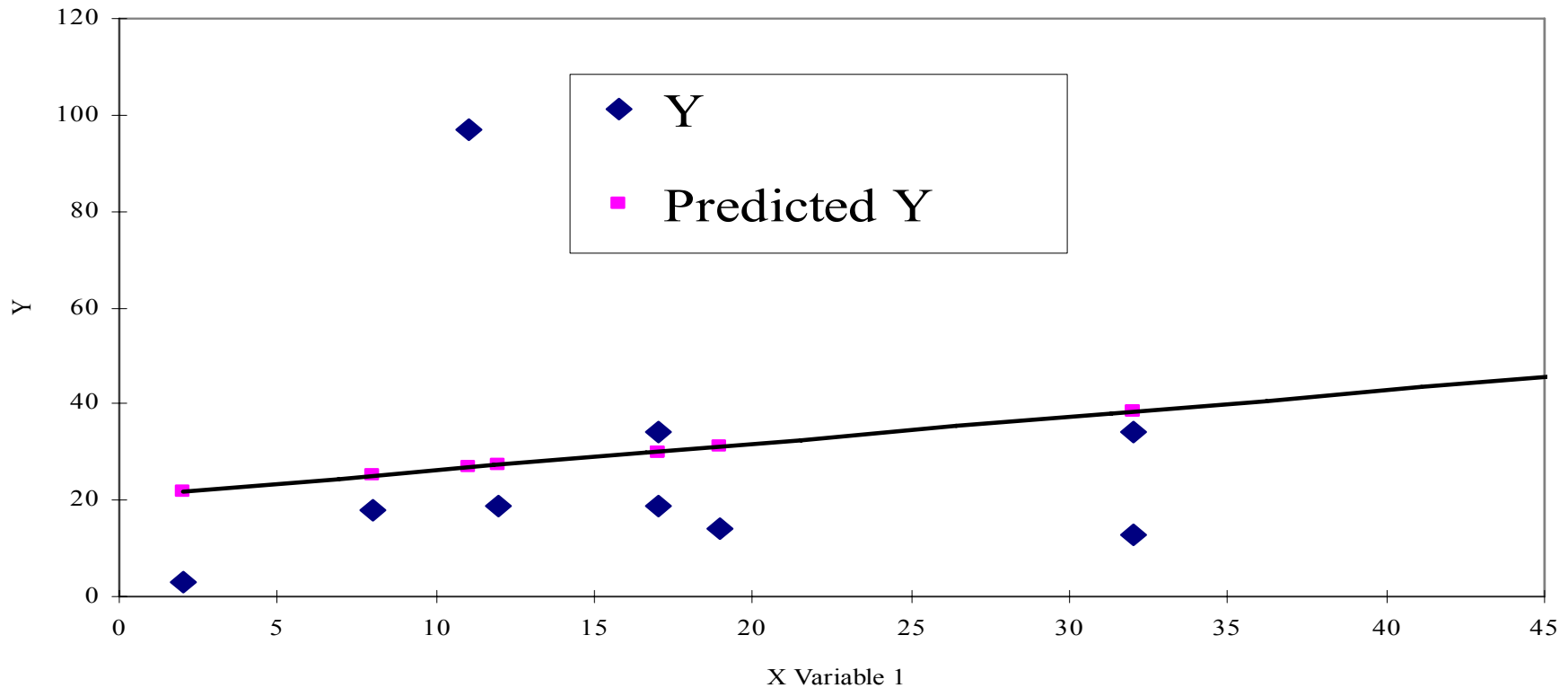
Comparison between 2006 and 2007



- In 2006, 76.4% of hunters shot two or more deer within Duluth
- In 2007, 49.2% of hunters shot two or more deer within Duluth
- Are we starting to see progress in herd reduction?
 - This does NOT imply hunters in 2007 were not as successful as in 2006.
 - On the contrary, it implies that hunters have been VERY successful at fulfilling our promise to the City and to the residents.

Hunter Harvest Residual Analysis (observed vs. predicted)

X Variable 1 Line Fit Plot



- Most observed 2007 values fall below the predicted 2007 values
- Harvest may have been lower than expected
- Results driven by greater numbers of hunters, same harvest level. Should have expected a higher harvest given higher effort.

Wounding Rates

- 62 deer were reported wounded
 - 9 of those just received haircuts and were dropped
- Wounding rate of **13.5%** in 2007
- Using expanded distribution from 159 returned year end surveys
- I suspect our wounding rates have always been this high, and that it's easier to be honest when anonymous, than when reporting to your HC.

Public vs. Private Lands

- 68.4% of the time was spent on Public Land
- 59.7% harvest from Public Lands

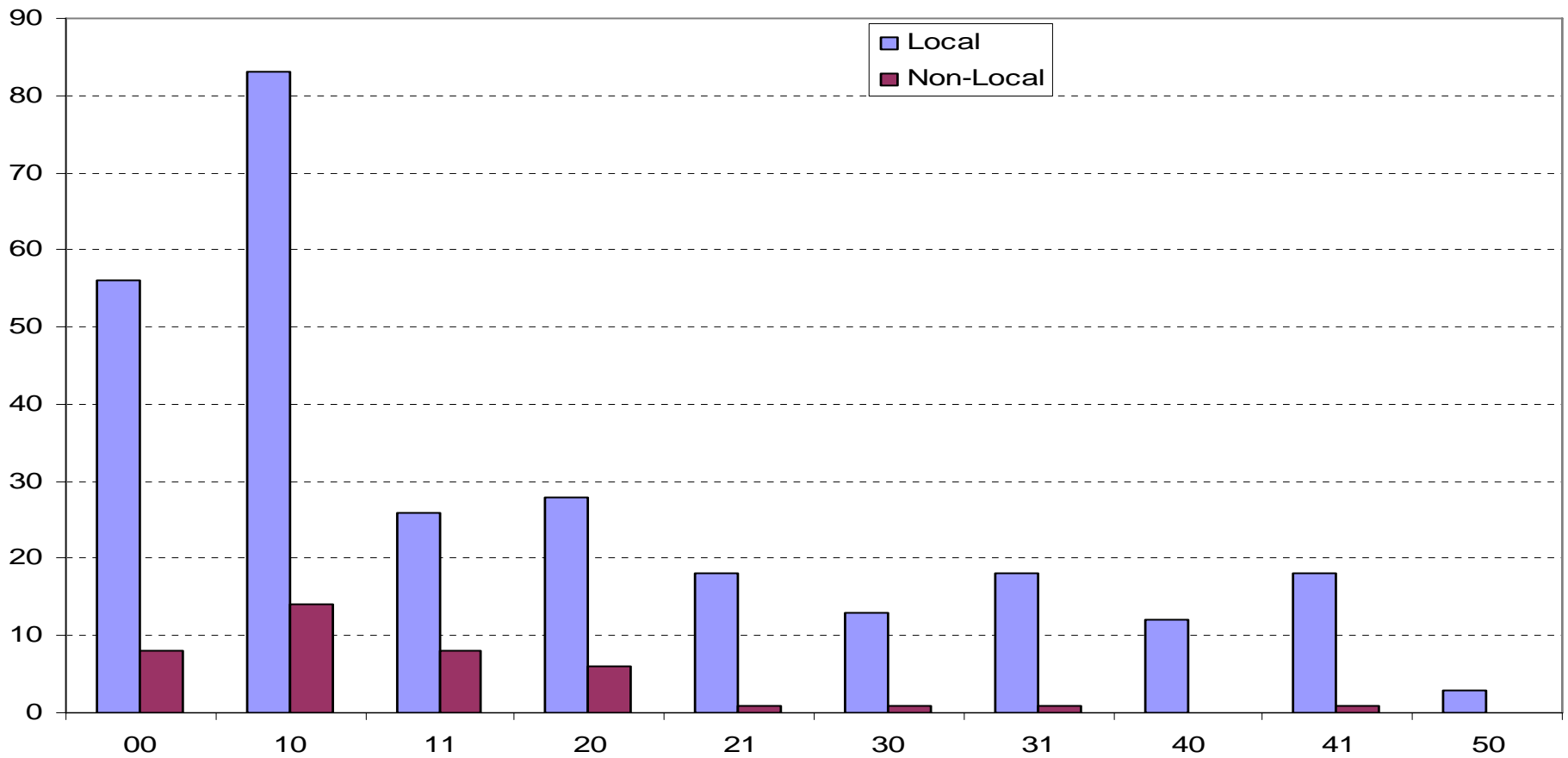
- 32.4% of hunting time was on Private Land
- 40.9% of harvest from Private Land

- Using expanded distribution from 159 returned year end surveys
- Obviously rounding errors, please don't call me and point that out.

Local vs. Non-Local Hunters

- Non-locals accounted for 12.3% of the hunters, and 10.1% of the harvest
- Locals harvested 90.3% of does (N=430)
- Locals harvested 87.9% of bucks (N = 80)
- Non-locals harvested 9.7% of does (N=46)
- Non-locals harvested 12.1% of bucks (N=11)
- Non-locals are non-MN residents, and hunters living further than Floodwood, e.g. Brainerd, Twin Cities

Local vs. Non-Local Hunters



Distribution not statistically significant ($\alpha=0.05$)

Most likely due to low sample sizes of non-locals

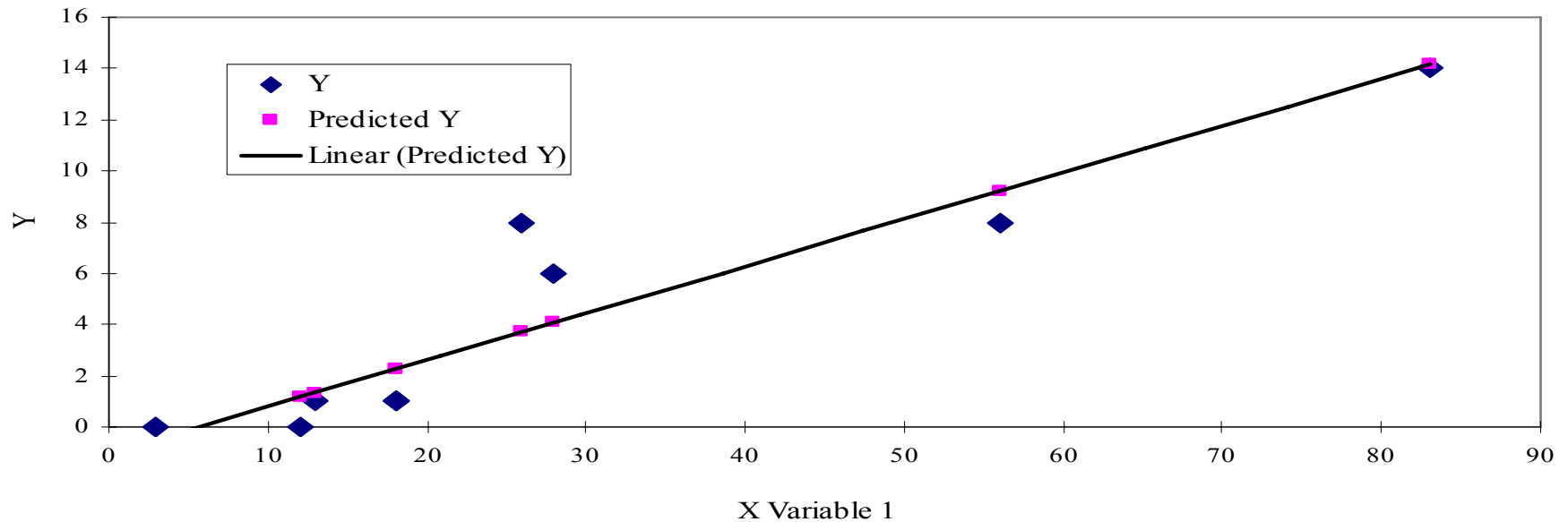
Feel free to go to sleep again for
this next slide . . .



4/27/2000 08:57

Local vs. Non-Locals Harvest Residual Analysis (observed vs. predicted)

X Variable 1 Line Fit Plot



No patterns observed in residuals

No patterns observed in non-local harvest vs. predicted (using local harvest as the predictor)

Regression analysis of non-locals vs. predicted is significant ($P = 0.00018$), with slope = 1.07 and intercept = -0.007, essentially a 1:1 comparison with $b = 0$

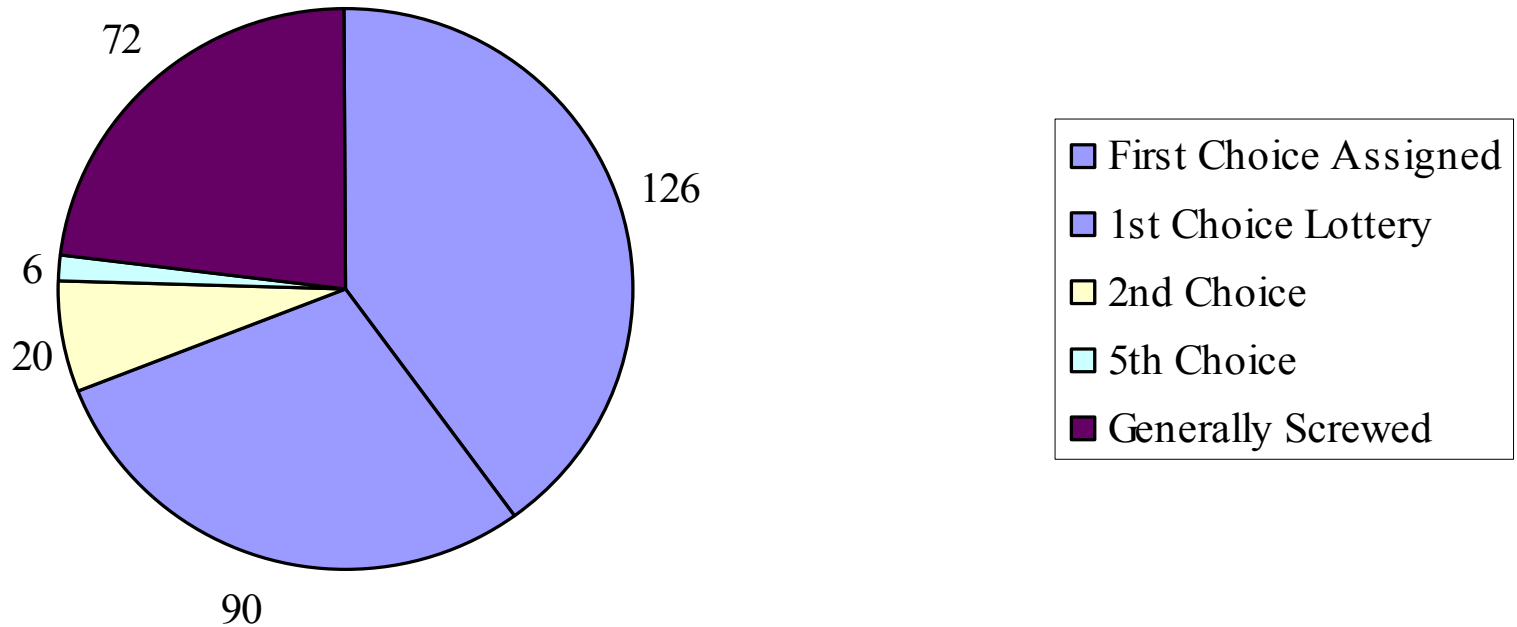
Therefore, doesn't appear the non-locals are shooting 1 and 1, and leaving (i.e. buck hunting)

Did not do analysis using just Wisconsin hunters as non-locals, given the high cost of tags.

Lottery Results

- Lots of hunters think they got screwed!
 - Perception is reality . . .
 - Bork didn't get ANY of his 5 choices.
- **22.9%** of hunters did not get ANY of their 5 choices.
- But, **68.8%** of hunters received their **FIRST CHOICE DHA!**
 - 216 hunters (out of 315) got their first choice!

Hunter Placement



- Yes, due to hunter placement, no hunter received any of their 3rd or 4th choices.
- Graph shows # of hunters within each category.

Lottery Discussion

- ABA has not done well at communicating with hunters on **EXACTLY** how hunters are placed, in spite of the public forum.
- Misinformation abounds . . .
- ABA will try to do better in 2008.
 - Really, they promise . . .

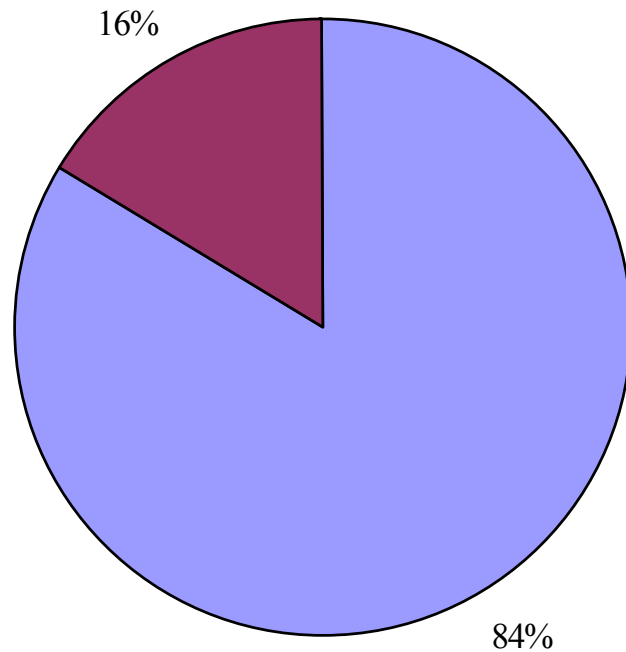
Final Hour Heroics

(Gotta LOVE good snow!!)

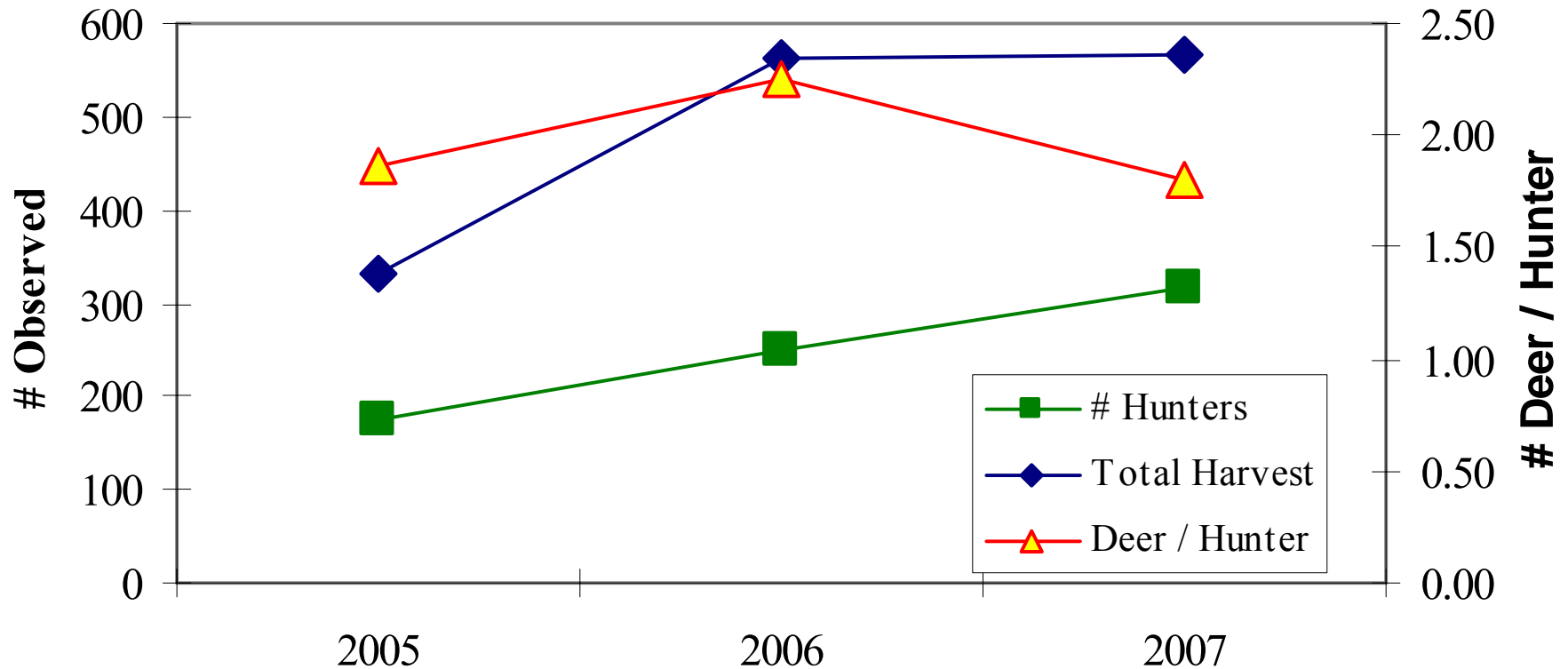
- Last four days of Hunt Analyzed
- 3.0 % of Harvest Occurred
 - 1 Hunter registered #5 Doe
 - 5 Hunters registered #4 Doe
 - 4 Hunters registered #3 Doe
 - 4 Hunters registered #2 Doe
 - 3 Hunters registered Buck

Total Harvest 3 Years

2005 - 2007 Total Harvest



2005 - 2007



- Harvest essentially same as 2006
- # deer / hunter down slightly
 - (more hunters, same # harvested = lower statistic. Duh.)
- Interest in the hunt is rising

Forecasting

- Increased trend in hunter effort required to kill a deer in 2007.
 - Bork suspects this trend will continue in 2008.
- Harvests rates of 10+ deer / mile² not sustainable.
- Good ‘ole days may be gone.
- Might actually have to work to harvest animals in the future.
 - That’s good! We’re seeing tangible results on a City-wide scale!
 - Still isolated hot spots of deer activity to focus future attention on.
- This means the ABA owes a heartfelt “Thank You” to all of the participating hunters that have each contributed to the goal of impacting the herd.

Questions?

- If they're legitimate questions, ask Bork
- If you just want to vent or bitch, please direct that to info@bowhuntersalliance.org
- Next slides solely reflect Bork's opinion, and not necessarily that of the ABA Board of Directors, or the City of Duluth . . .

- I own a 30-acre chunk of woods in Hermantown. I figure, “Heck, this is my land, and I’ve got lots of deer. I’m going to open up the deer season on September 1, and run the deer season until the first of March. I’m going to call it the “Bork Management Hunt”, because these dang vermin are devastating my wife’s hostas. Plus, I think I’m going to give away 10 tags to several of my friends to help me out. The State will surely recognize the “Bork Management Hunt”.”

- Sound reasonable to you?
- Anyone want to hunt on my land, say the first weekend in February?

State Sovereignty

- The State of MN maintains sole management authority over the State's fish and wildlife populations. Period.
- Owners of private land can authorize hunting on their land, and manage hunting on their land within the framework established by the MNDNR.
- Land owners can not extend hunting seasons, nor authorize the taking of more animals than what the State allows under their regulations.

State Sovereignty, cont.

- Lots of hunters have requested that the ABA extend the season into January and February.
- Many more asked that the ABA give out more tags than the five allowed by the MNDNR, since this is a “Management Hunt”.
- The City of Duluth is a landowner, nothing more, when it comes to wildlife management. ABA is only an administrator of the hunt.
- The City of Duluth has graciously allowed hunters onto their public lands. The City has required us to abide by certain “landowner provisions” for the opportunity to hunt on their land. Mr. John Homeowner has also allowed hunters onto his private land, and may ask us to follow his specific rules, e.g. park here, lock the gate, only hunt near the back of the property, etc.

State Sovereignty, cont. . .

- Landowners can not usurp the wildlife management authority held by the State of MN.
- The ABA and the City are not authorized to grant what many hunters are asking for, e.g. more tags and longer seasons.
- Any changes to this framework must occur down in St. Paul.
- The City of Superior worked with Madison to enact just the changes that our hunters are requesting. Superior is a hunting zone in and of itself, with it's own set of regulations.
- Have you called St. Paul and asked for this? Does St. Paul even know we exist up here in pohdunkville?

- Once again, if you don't agree with me, please do not bombard my Inbox telling me that you think I'm a putz. I know I'm a putz.
- Also, please do not bombard the ABA Board, because the views reflected here are solely my own, being expressed on this forum because I've had this conversation with dang near a dozen of my fellow hunters already. I just thought that I'd put all of the cards on the table face up for everyone else. Plus, it's my forum and I can do what I want until someone else steps up and volunteers to do this job if the ABA fires my butt . . .
- Thank you -- Bork