

Harvest Summary 2008

or . . .

Everything you really didn't want to
know about the Duluth Bowhunt,
and were afraid to ask.

Submitted to ABA Board

By Bork

2005 Results

- **9600 Acres open to hunting**
- **210 Applicants**
 - 189 Hunters Qualified and were Placed
 - 177 Actually Hunted
- **331 Deer Harvested (263 ♀, 68 ♂)**
- **1.87 Deer / Hunter**
 - 0.13 / Bowhunter MN Mean
- **22.1 deer / mile² harvested**
- **Wounding Rate of 7.8%**

2006 Results

- 20,100 Acres open to hunting
- 260 Applicants
 - 251 Placed
 - 195 Reported Harvest
- 564 Deer Harvested (485♀, 79♂)
 - 2.25 deer / hunter (if all hunted)
 - 2.9 deer / successful hunter
- 7.2 % Wounding Rate
- 18.0 deer / mile² harvested

2007 Results

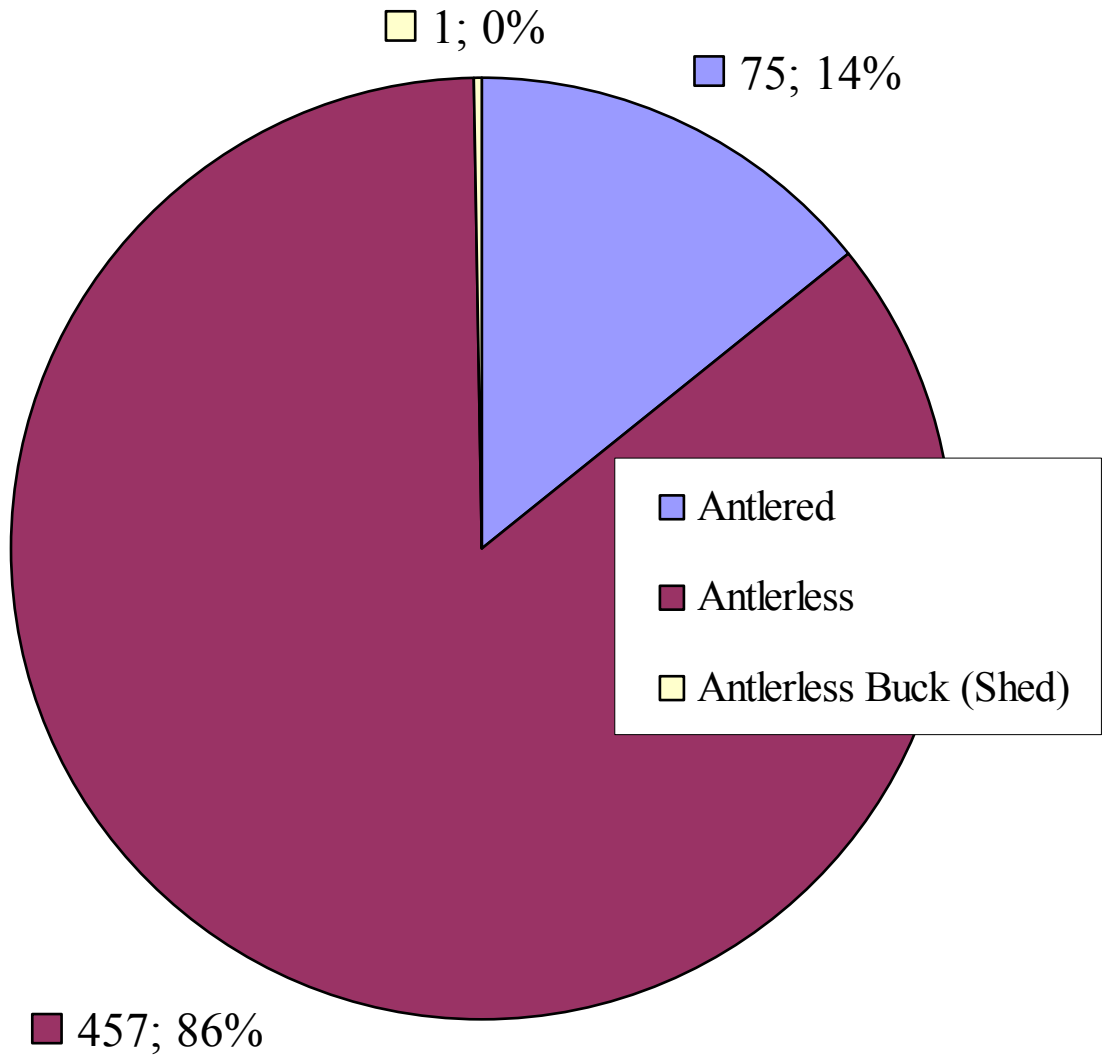
- 22,252 Acres Open to Hunting
- 315 Hunters Placed
- Estimated 310 Actually Hunted
- 567 Deer Harvested (476♀, 91♂)
- 1.8 Deer / hunter
- 16.3 deer / mile² harvested

2008 Results

- No additional acreage (save for 3 Hot Spots)
- 289 Hunters placed (2 removed early)
- 533 Deer Harvested (457♀, 75♂)
- 1.84 Deer / Hunter
 - Only 0.26 Bucks / hunter
- 17.0 deer / mile² harvested
 - 16.7 without Hot Spot stats

Year End Survey

- 129 Responses (out of 292 hunters)
 - 159 responses in 2008. What happened!!!???
- Response rate of 44.2%
 - Shame on all of you that ignored me multiple times!
 - 50.5% response rate in 2008.
- Looking at harvest rates vs. responses, data suggests that if a hunter failed to shoot a deer in 2008, they ignored my Year End Survey.



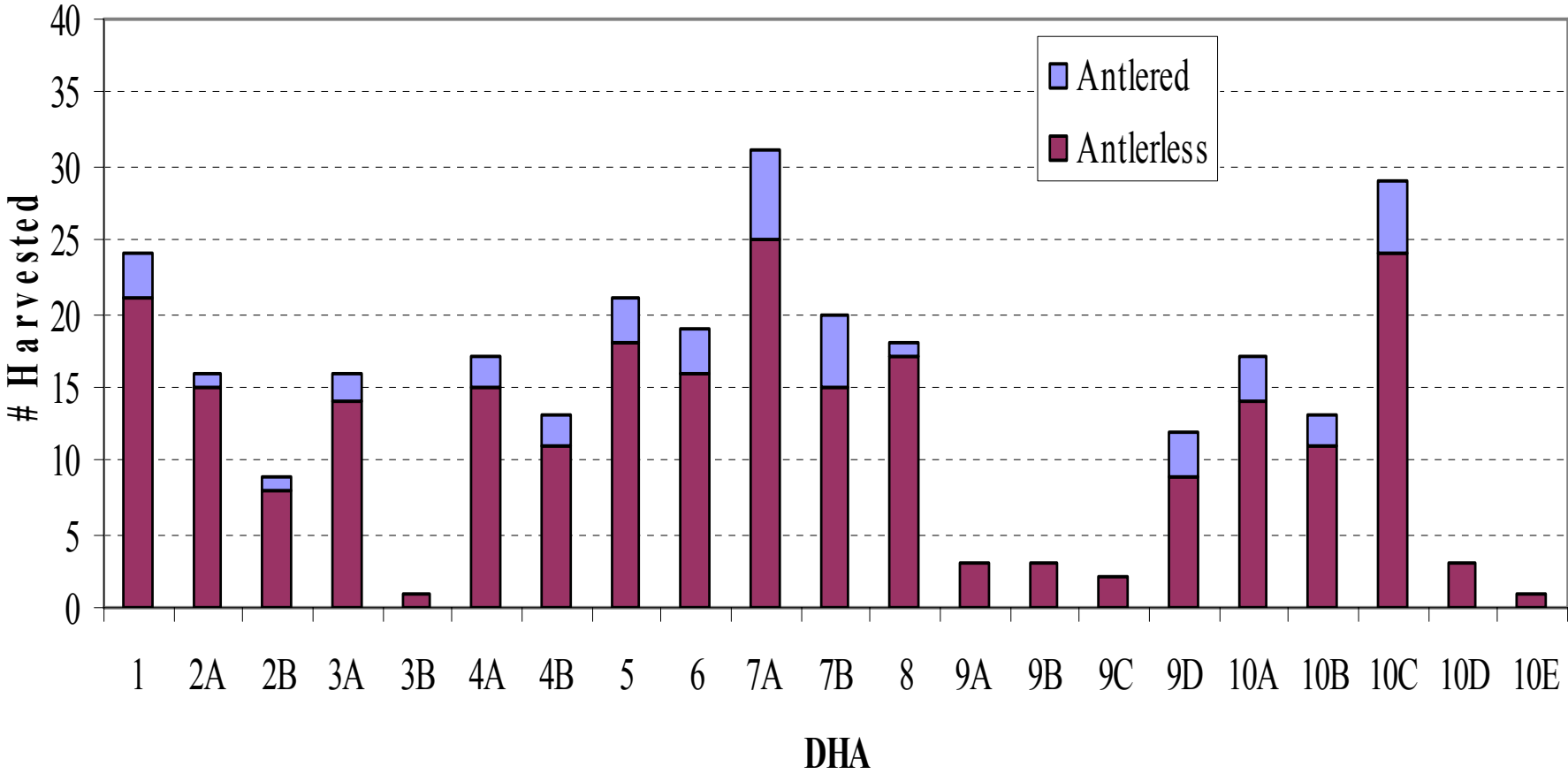
14% Bucks

86% Antlerless

Breakdown of Antlerless

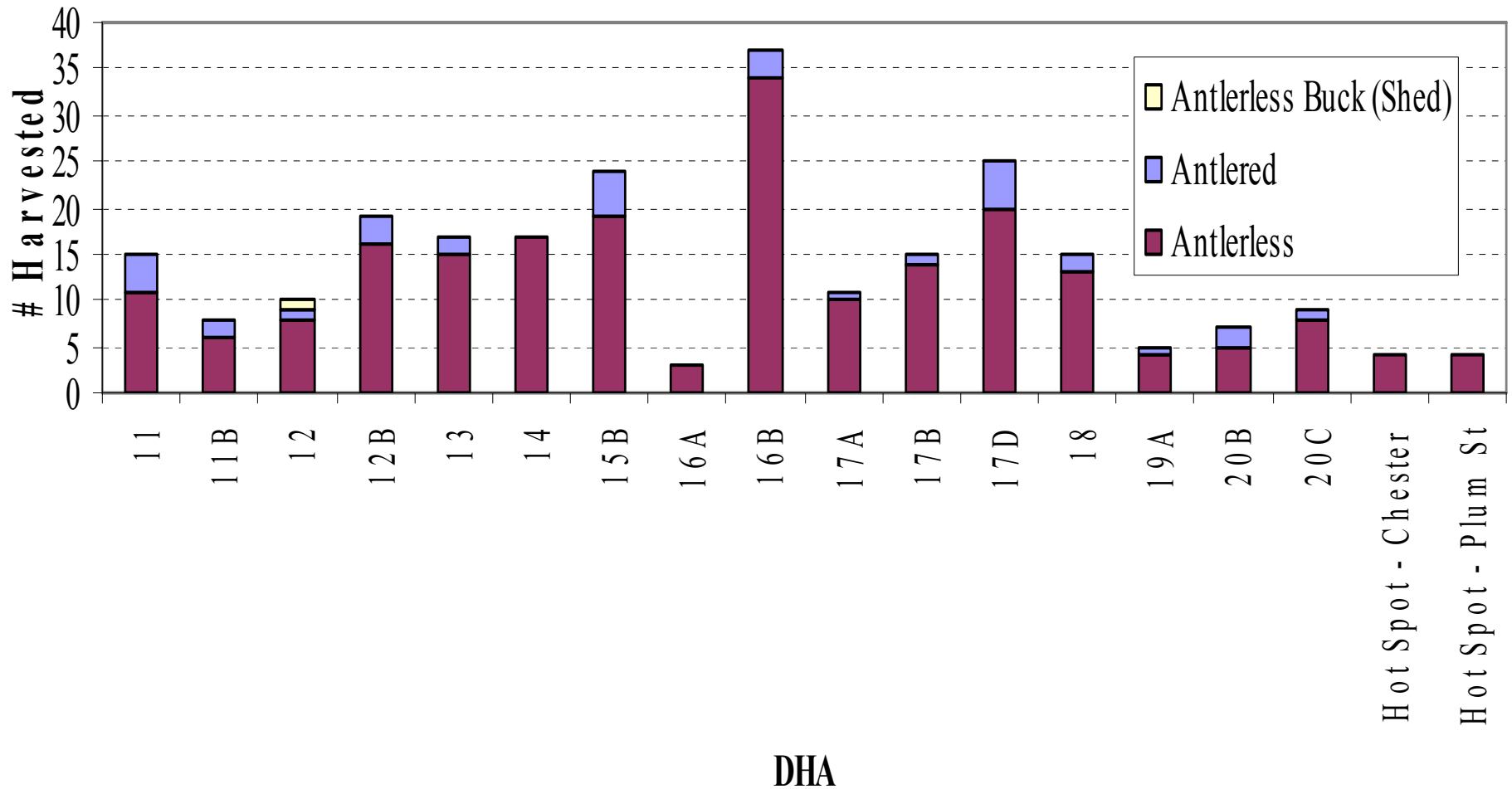
- 456 Antlerless deer harvested in 2008
 - 74 Doe fawns
 - 78 Buck fawns
 - 305 Adult does
 - 1 Adult buck that shed prior to harvest

Total Harvest



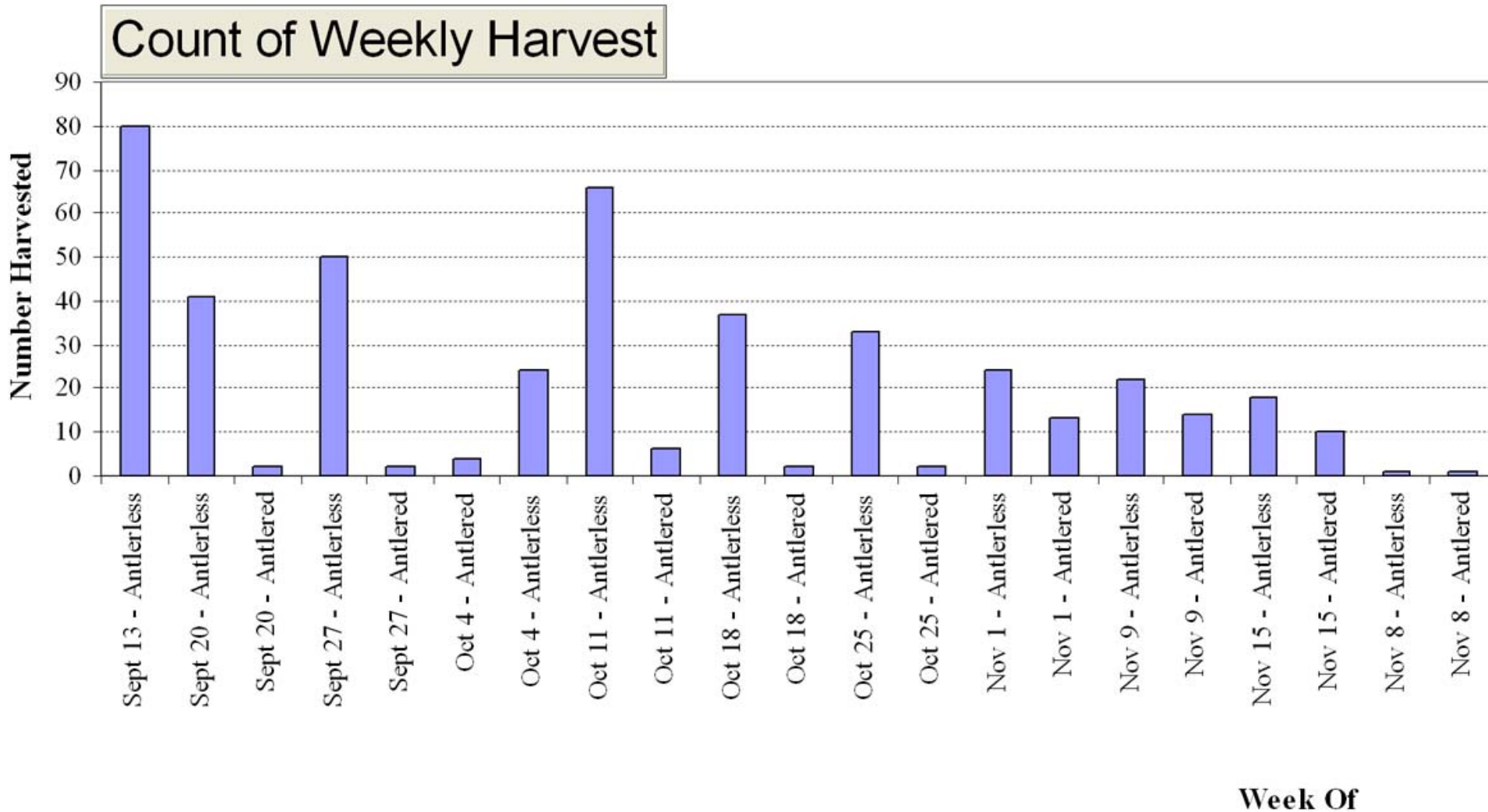
Total Harvest by DHA, part 2

Total Harvest by DHA



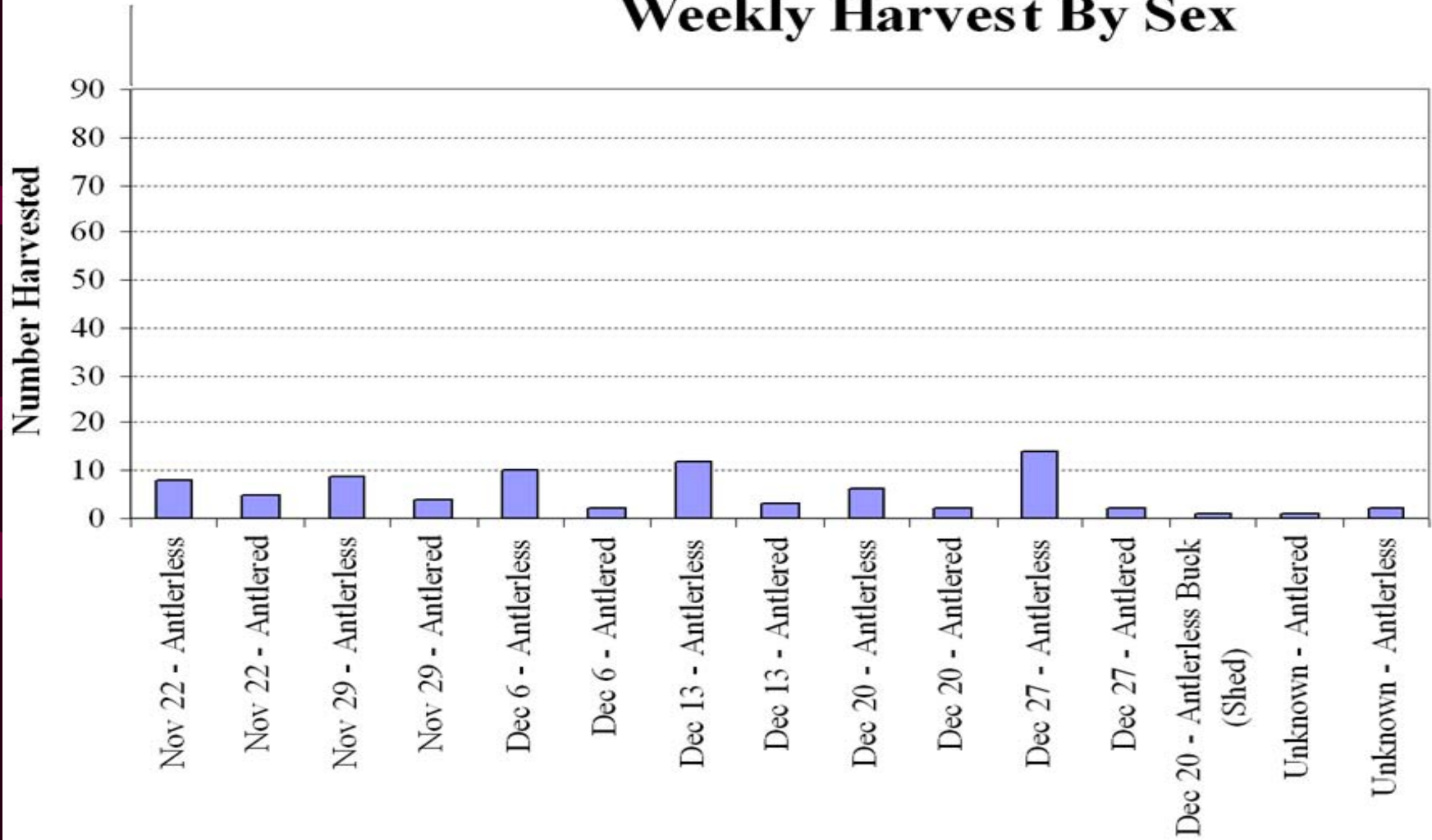
Harvest by Week, part 1

Weekly Harvest By Sex

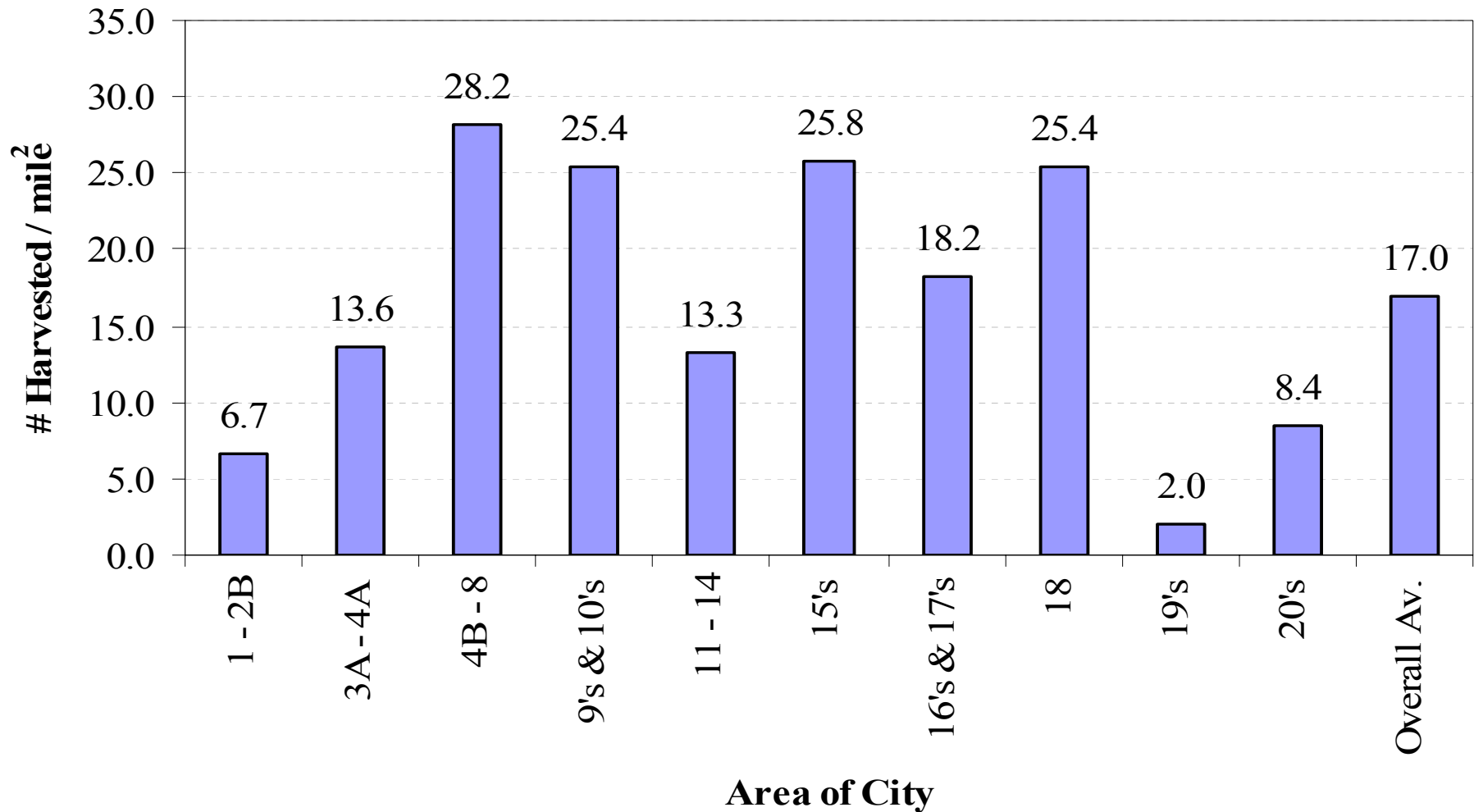


Harvest by Week, part 2

Weekly Harvest By Sex

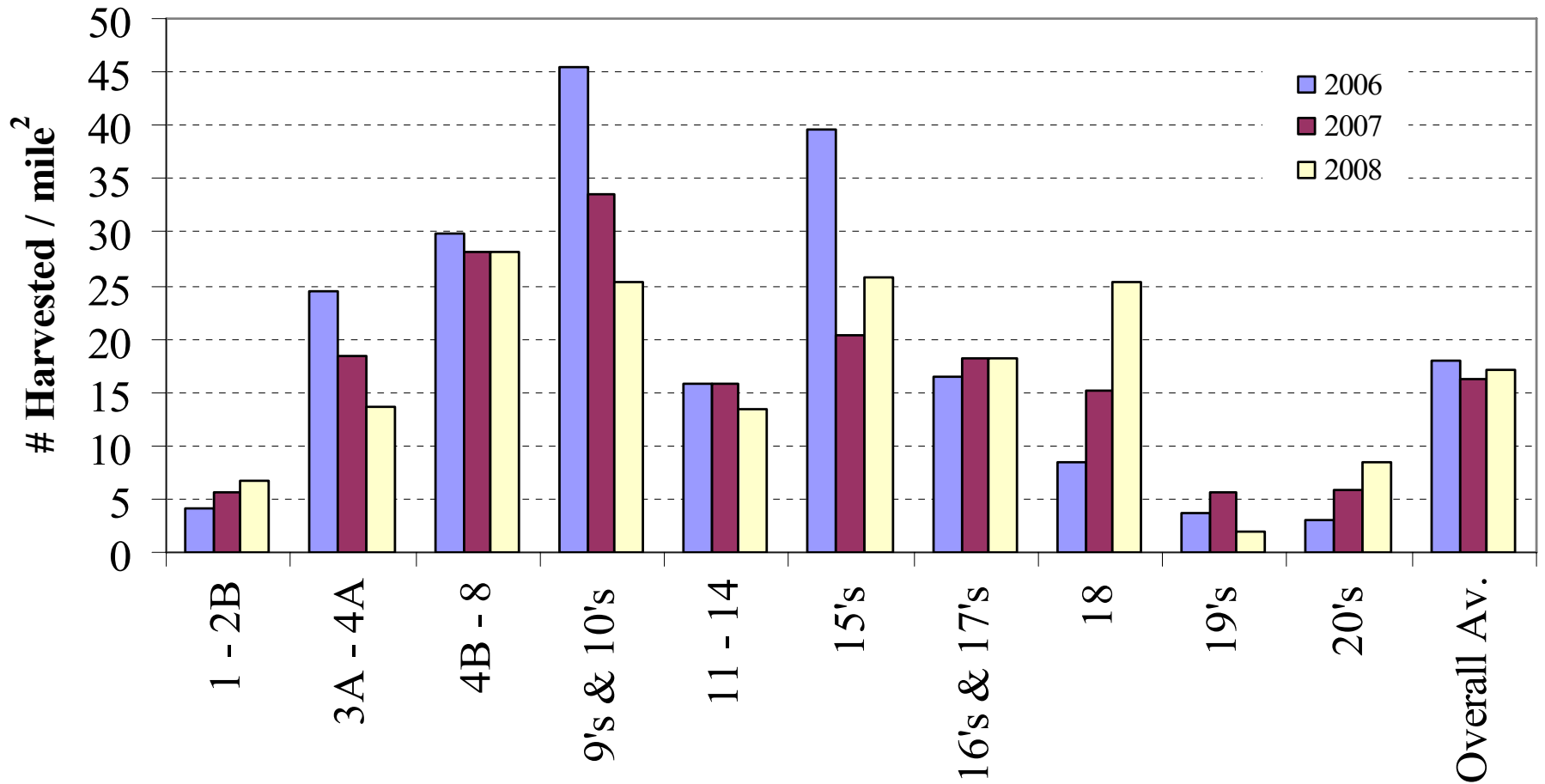


2008 Harvest per square mile



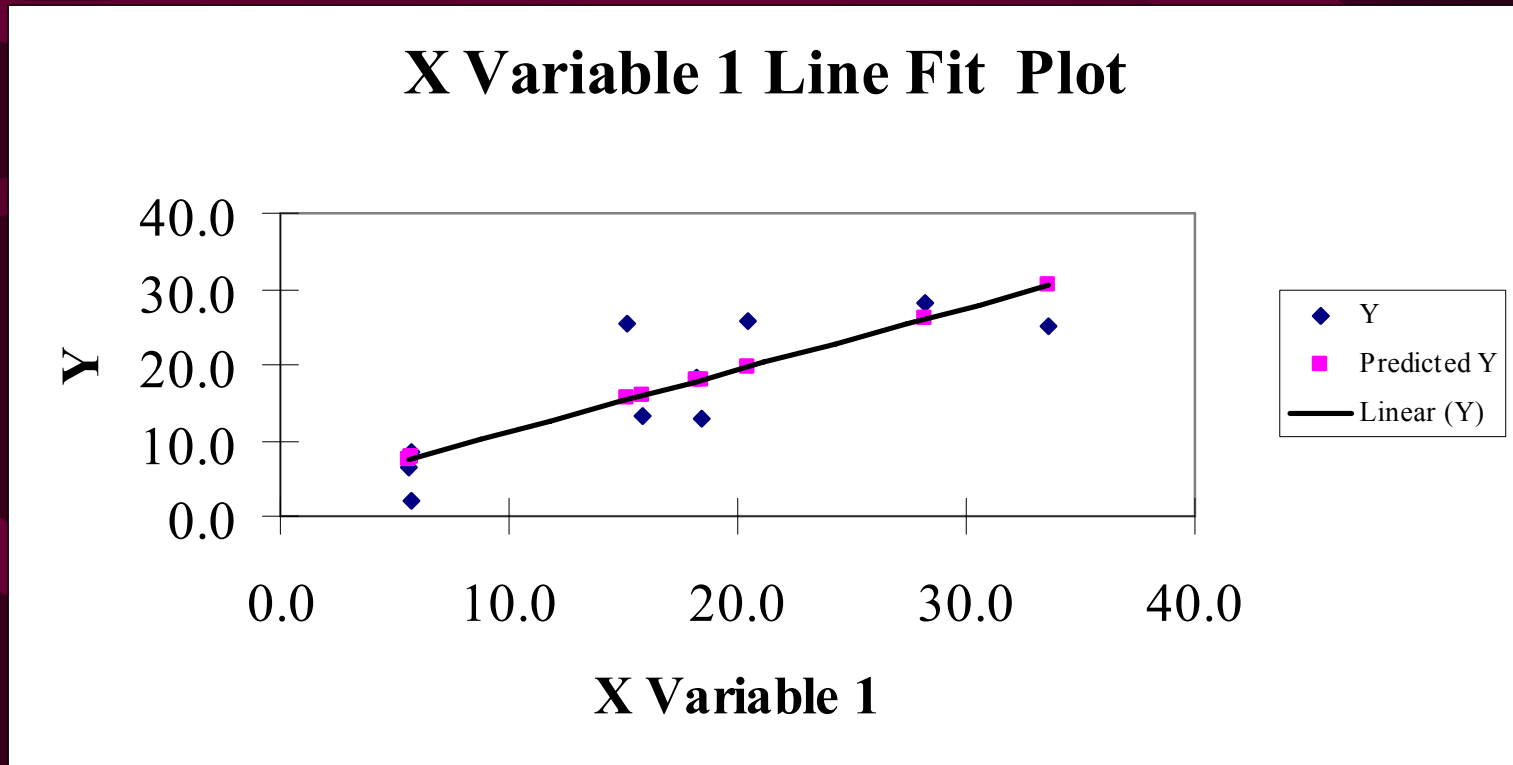
Harvest / mile²

Last three Seasons

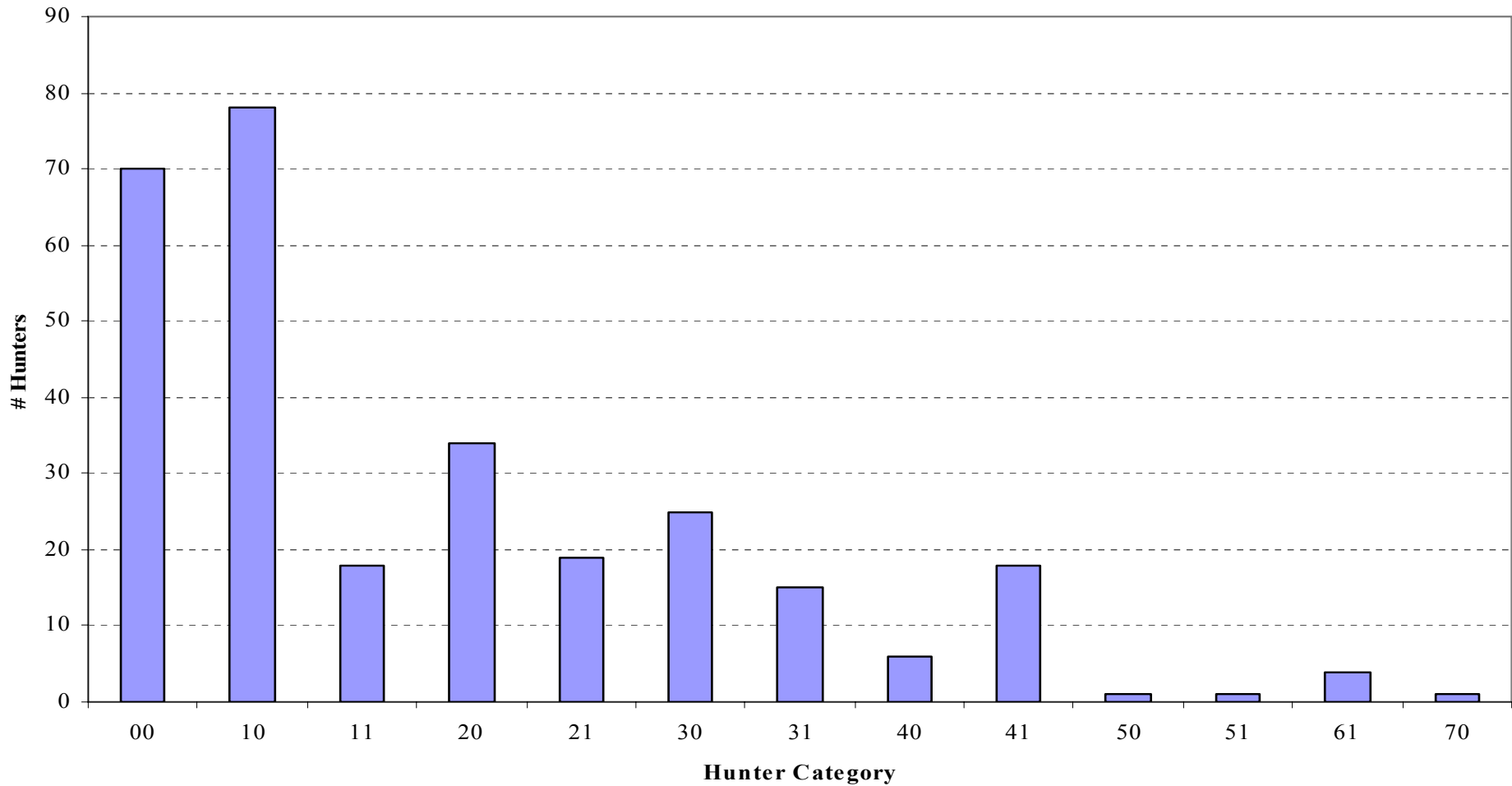


Deer / mile² across DHAs, Residual Analysis (observed vs. predicted)

- No pattern to observed 2008 vs. predicted
- Suggested no overarching differences in harvest densities across all DHAs
- May be local differences



2008 Hunter Category



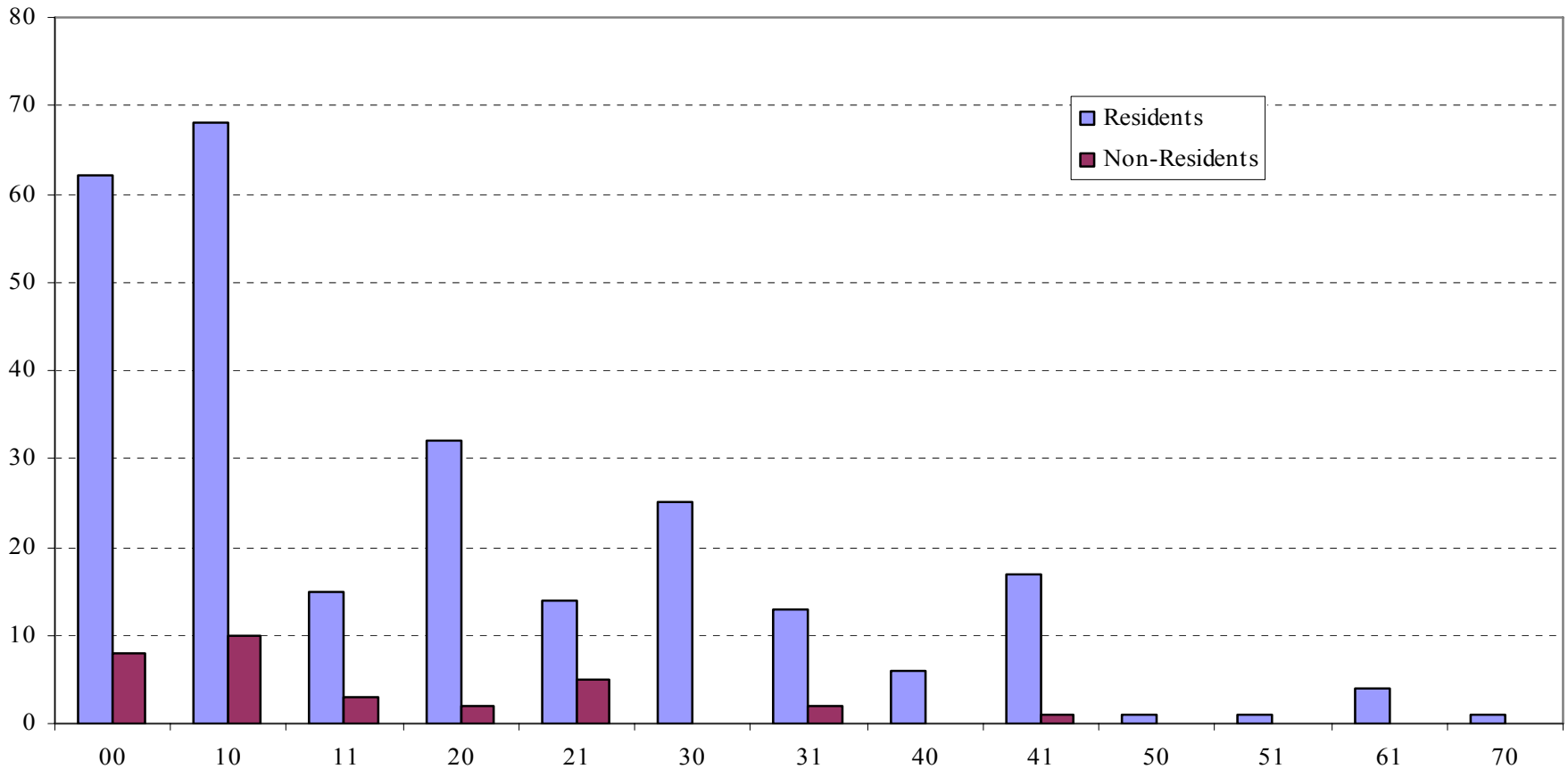
- Hunter Category is a two part designation
- 10 means the hunter shot one antlerless, no bucks
- 11 means the hunter shot one antlerless and one buck
- 31 means the hunter shot three antlerless and one buck

- In 2006, 76.4% of hunters shot two or more deer
- In 2007, 49.2% shot two or more deer
- In 2008, 48.3% shot 2 or more deer
 - 150 Hunters shot 0 or 1 deer

Local vs. Non-Local Hunters

- Non-locals accounted for 11.6% of the hunters (N=32), and 9.0% of the harvest (8 non-locals harvested 0 deer)
- Locals harvested 91.9% of does (N=418)
- Locals harvested 85.3% of bucks (N = 64)
- Non-locals harvested 8.1% of does (N=37)
- Non-locals harvested 14.7% of bucks (N=11)
- Non-locals are non-MN residents, and hunters living further than Floodwood, e.g. Brainerd, Twin Cities

Local vs. Non-Local Hunters



Distribution not statistically significant ($\alpha=0.05$)

Most likely due to low sample sizes of non-locals

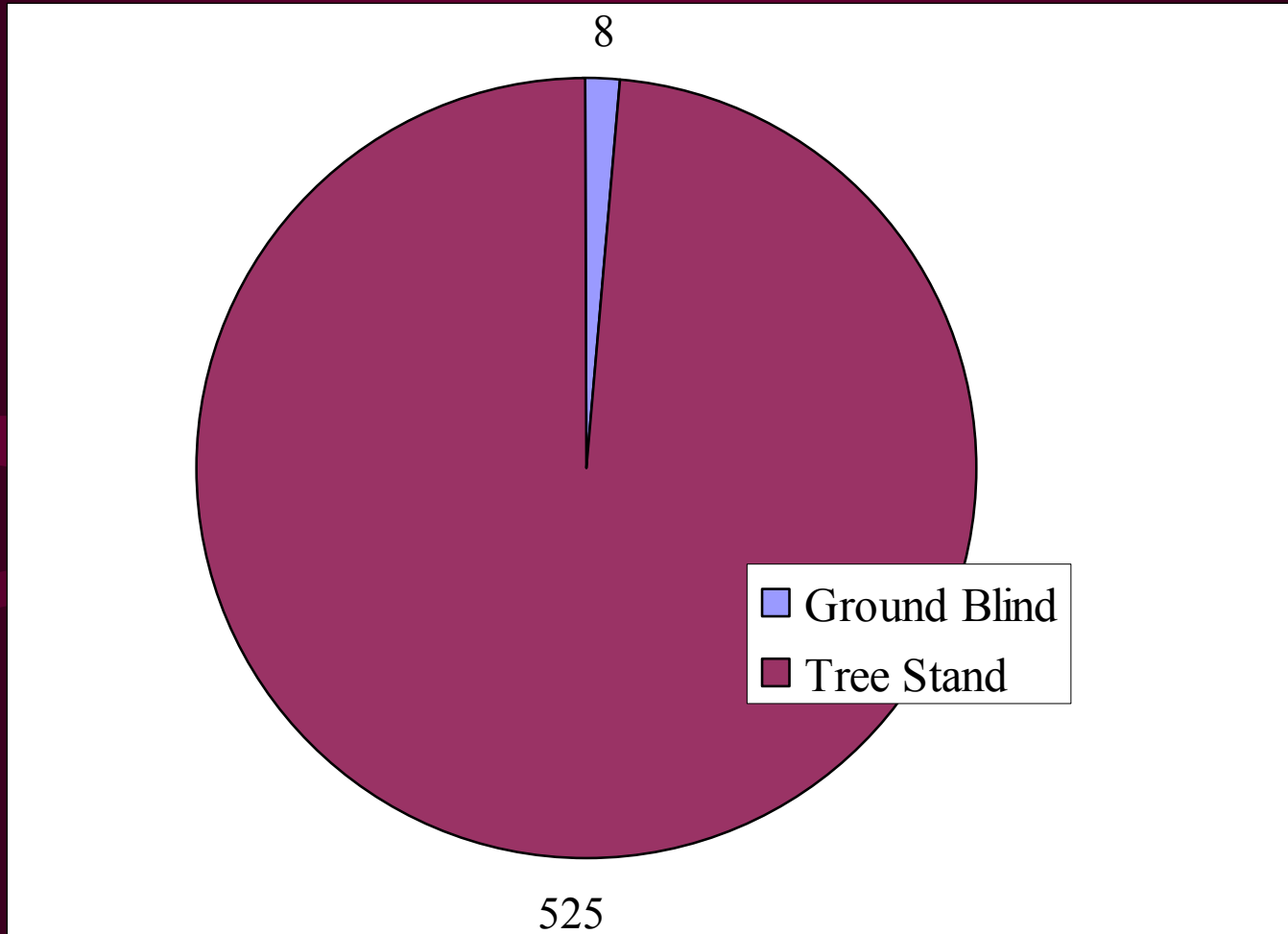
Wounding Rates

- 46 deer were actually reported wounded
 - 18 of those just received haircuts
- Wounding rate of **14.6%** in 2008
 - (13.5% in 2007)
- Removing deer with haircuts:
 - Wounding rate of 8.9%
- *Actual expanded number of wounded deer would be expected to be closer to **64**, based upon the Year End Survey*

Public vs. Private Lands

- 60.4% of harvest from Public Lands
- 39.6% of harvest from Private Land
- 248 Different properties registered in 2008
- 121 Hunters turned in LOPs

Harvest from Tree Stands vs. Ground Blinds



Many asked for ground blinds, few used them

Zero incidents reported. Thank you for staying safe!!

Early Season Tags

- 23 Deer were registered using the special Early Season Antlerless Tags
- Have no idea how many were purchased and not used

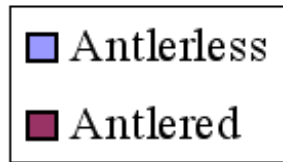
Venison Donation

- 205 harvested deer were reported as “Donated”
 - Includes Food Shelf, friends, family, etc.
- All or part of 38.7% of harvested deer was donated.

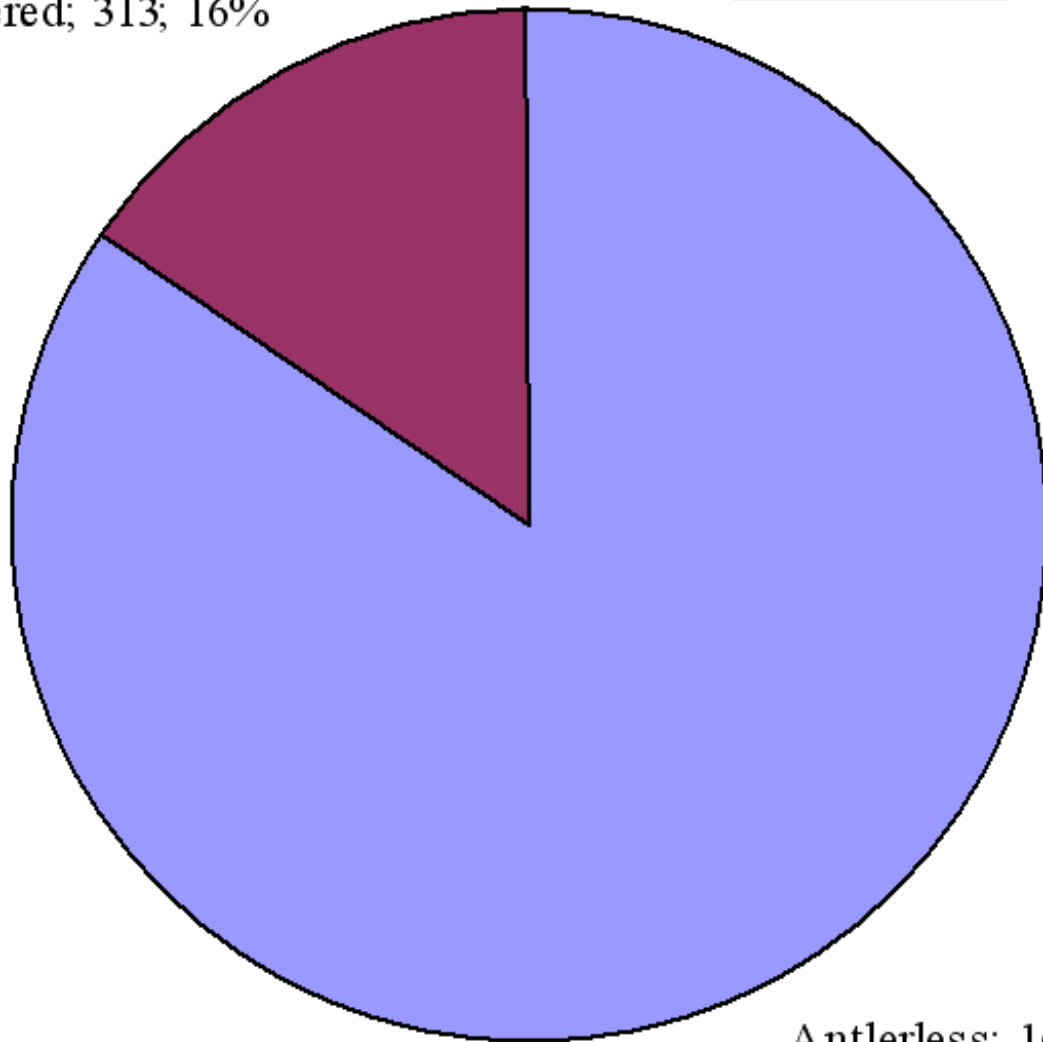
Lottery Results

- **75.4%** of hunters received their 1st Choice DHA!
 - Up from 68.8% in 2007
 - 199 hunters (out of 264 Returning Hunters) got their first choice!
 - 7.6% received 2nd Choice DHA
 - 83.0% got to hunt where they wanted to!
- Hard to argue that the system isn't working well!

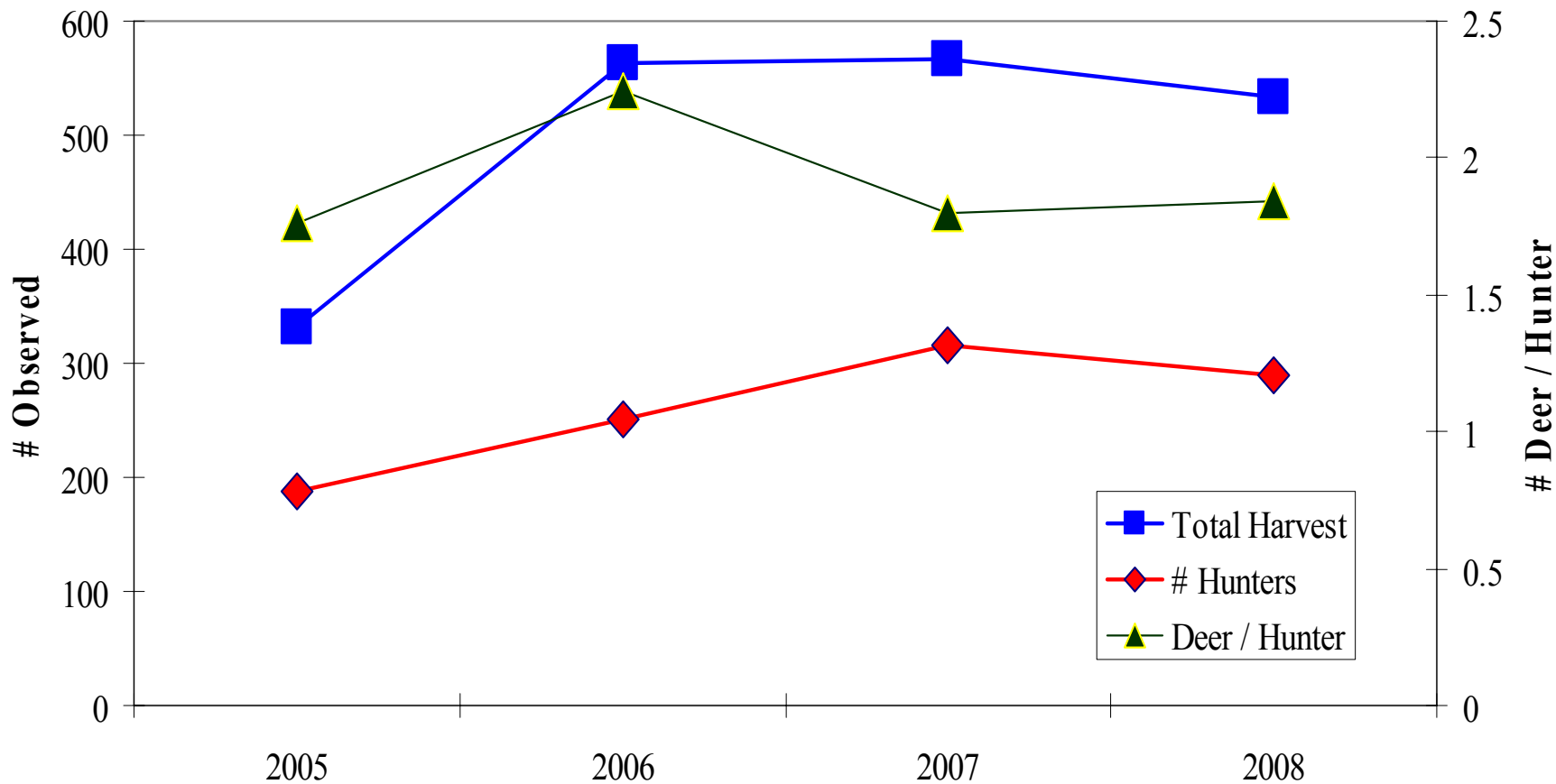
Total Harvest 2005 - 2008



Antlered; 313; 16%



Antlerless; 1682; 84%



- Harvest essentially same since 2006
- # deer / hunter stable at 1.8
- Interest in the hunt may be declining
 - Could not fill all 300 spots in 2008

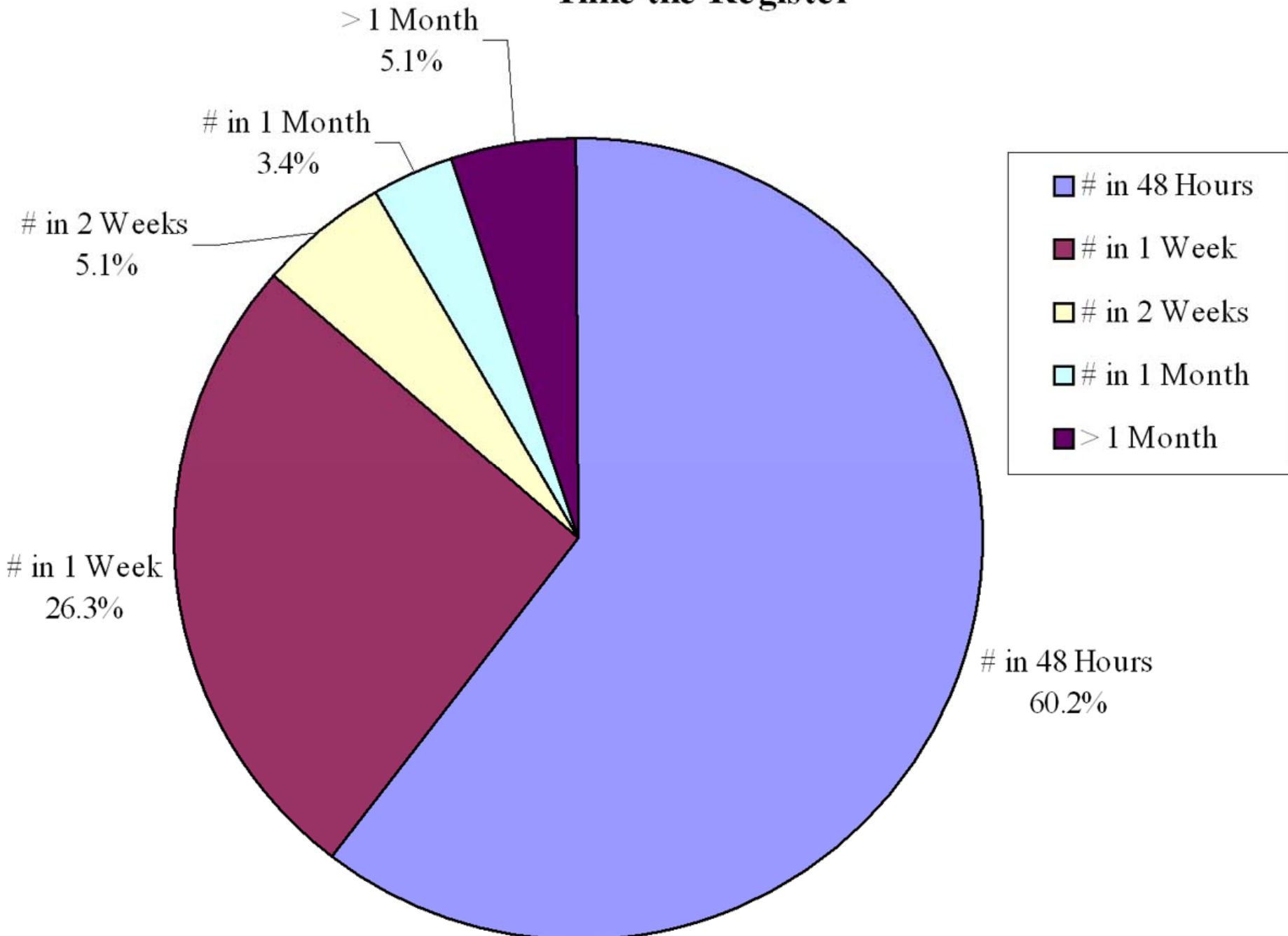
Compared to State Average

- Duluth Bowhunt saw a decline in # hunters
- Harvest / Hunter remained unchanged
- Total Duluth harvest down 6.5% from 2007
- Total Statewide harvest down 19%
- Statewide archery down 7%
- Duluth hunters harvested 2.4% of State archery total
- Not a bad showing by Duluth Bowhunters!

Mandatory Registration

- Rules Manual states that hunters have 48 hours to register their harvest.
- How'd we do?
- **BAD!!!!!!**

Time the Register



- 60.2% deer registered within 48 hours.
- I can live with the 26.3% that did so within 1 week
- What makes my job so difficult is the 5.1% of you that waited a month or more!
 - 25 deer registered > 30 days late!
 - 10 deer registered > 90 days late!!!
 - 35 deer not registered until HCs called to remind!

And you can't claim you didn't know since I sent summaries every two weeks.
All you can claim is that you don't care all that much.

Questions?

- If they're legitimate questions, ask Bork
- If you just want to vent or bitch, please direct that to infoduluthhunt@gmail.com