

# Harvest Summary 2010

or . . .

Everything you really didn't want to  
know about the Duluth Bowhunt,  
and were afraid to ask.

Submitted to ABA Board

By Bork

# 2005 Results

- **9600 Acres open to hunting**
- **210 Applicants**
  - 189 Hunters Qualified and were Placed
  - 177 Actually Hunted
- **331 Deer Harvested (263 , 68 )**
- **1.87 Deer / Hunter**
  - 0.13 / Bowhunter MN Mean
- **22.1 deer / mile<sup>2</sup> harvested**
- **Wounding Rate of 7.8%**

# 2006 Results

- 20,100 Acres open to hunting
- 260 Applicants
  - 251 Placed
  - 195 Reported Harvest
- 564 Deer Harvested (485 , 79 )
  - 2.25 deer / hunter (if all hunted)
  - 2.9 deer / successful hunter
- 7.2 % Wounding Rate
- 18.0 deer / mile<sup>2</sup> harvested

# 2007 Results

- 22,252 Acres Open to Hunting
- 315 Hunters Placed
- Estimated 310 Actually Hunted
- 567 Deer Harvested (476 , 91 )
- 1.8 Deer / hunter
- 16.3 deer / mile<sup>2</sup> harvested

# 2008 Results

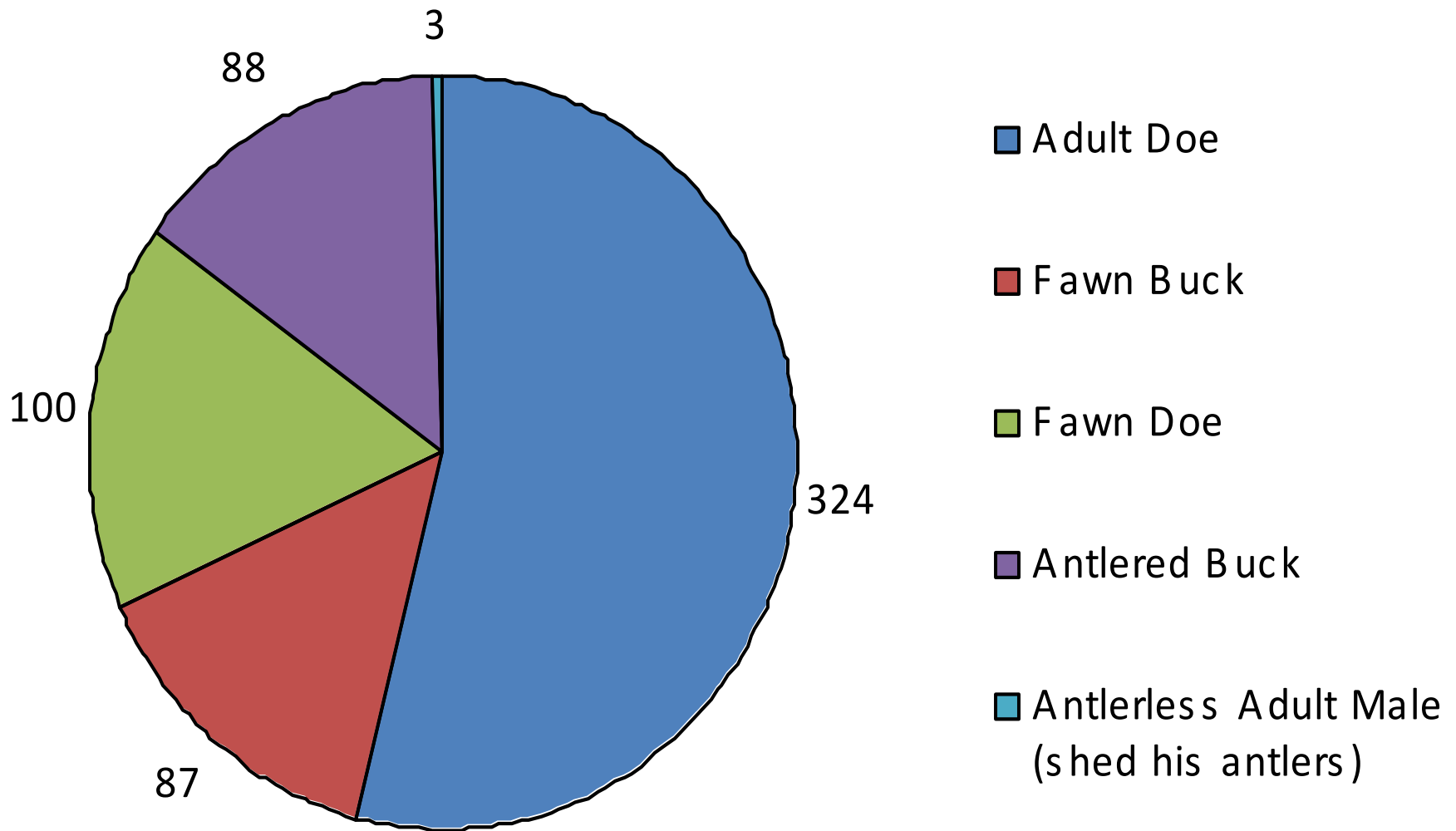
- No additional acreage (save for 3 Hot Spots)
- 289 Hunters placed (2 removed early)
- 533 Deer Harvested (457 , 75 )
- 1.84 Deer / Hunter
  - Only 0.26 Bucks / hunter
- 17.0 deer / mile<sup>2</sup> harvested
  - 16.7 without Hot Spot stats

# 2009 Results

- Approx 300 acres added to DHA 1 (plus an increase in number of Hot Spots)
- 316 Hunters placed
- 586 Deer Harvested (492 , 94 )
- 1.85 Deer / Hunter
  - Only 0.30 Bucks / hunter
- 16.4 deer / mile<sup>2</sup> harvested
  - 14.8 without Hot Spot stats

# 2010 Results

- No increase in Real Estate, except for a small increase in number of Hot Spots
- 339 Hunters placed
- 602 Deer Harvested (514 , 88 )
  - 3 Antlerless were Adult that already shed antlers
- 1.78 0.08 Deer / Hunter
  - Only 0.26 0.02 Bucks / hunter
- **15.8 deer / mile<sup>2</sup> harvested**
  - 15.6 without Hot Spot stats



14.6% Bucks

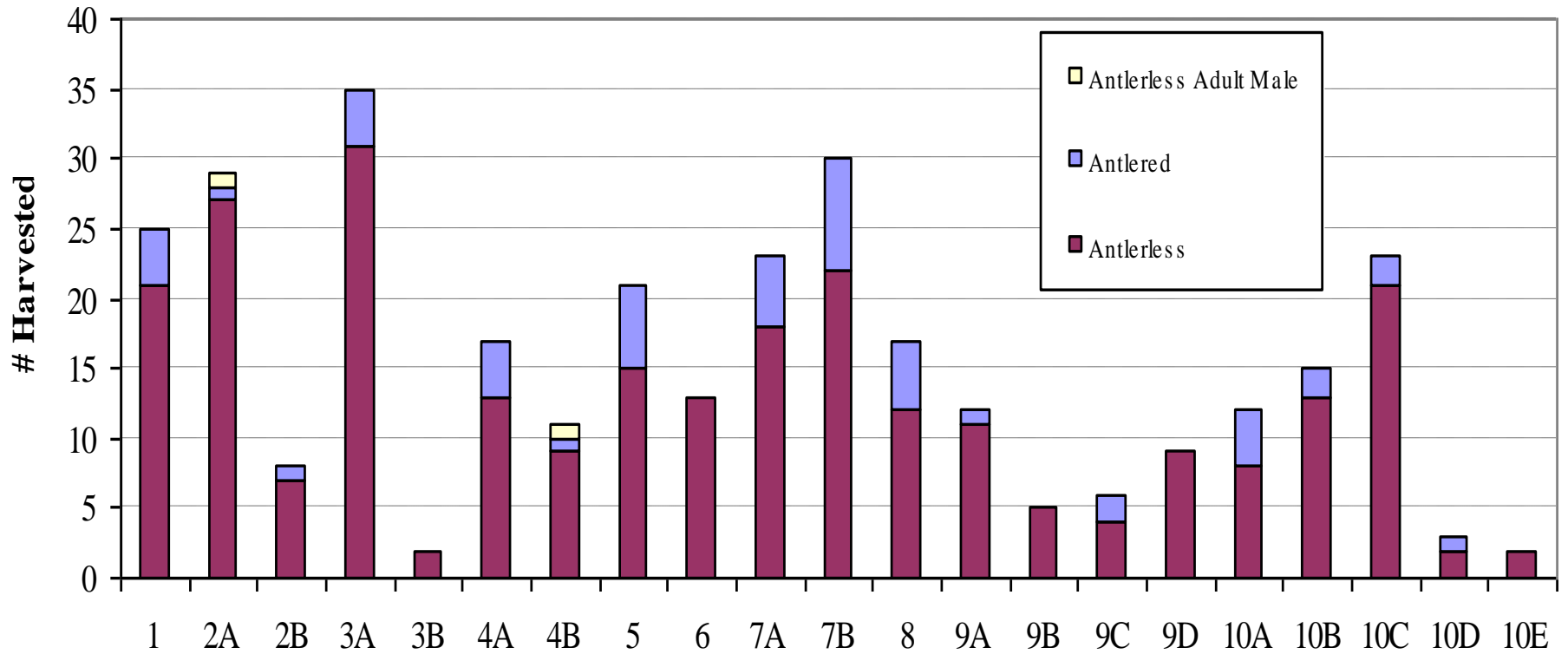
85.4% Antlerless



# Breakdown of Antlerless

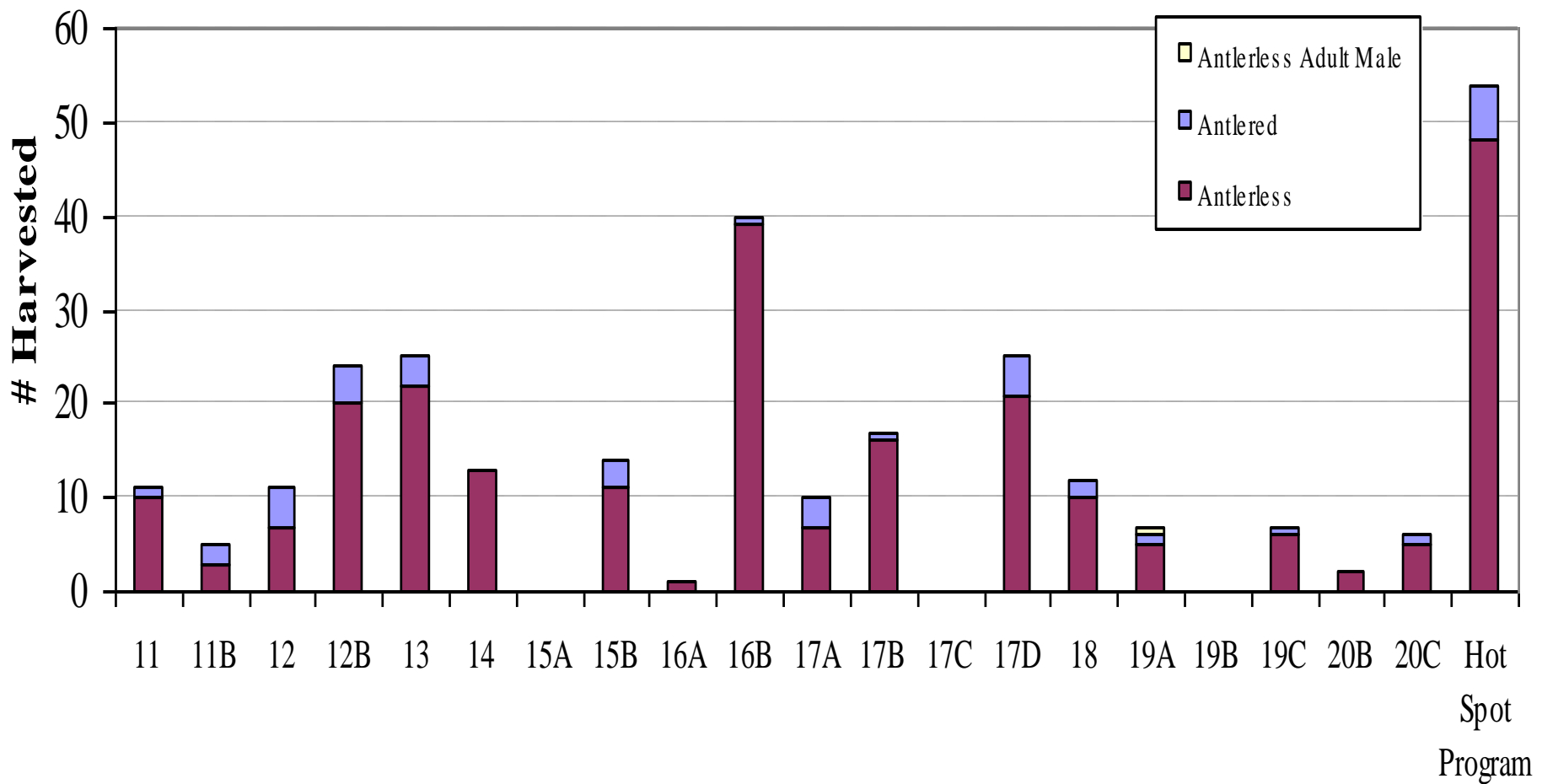
- 514 Antlerless deer harvested in 2010
  - 100 Doe fawns
  - 87 Buck fawns
  - 324 Adult does
  - 3 Antlerless Adult Males (already shed)

## Total Harvest by DHA

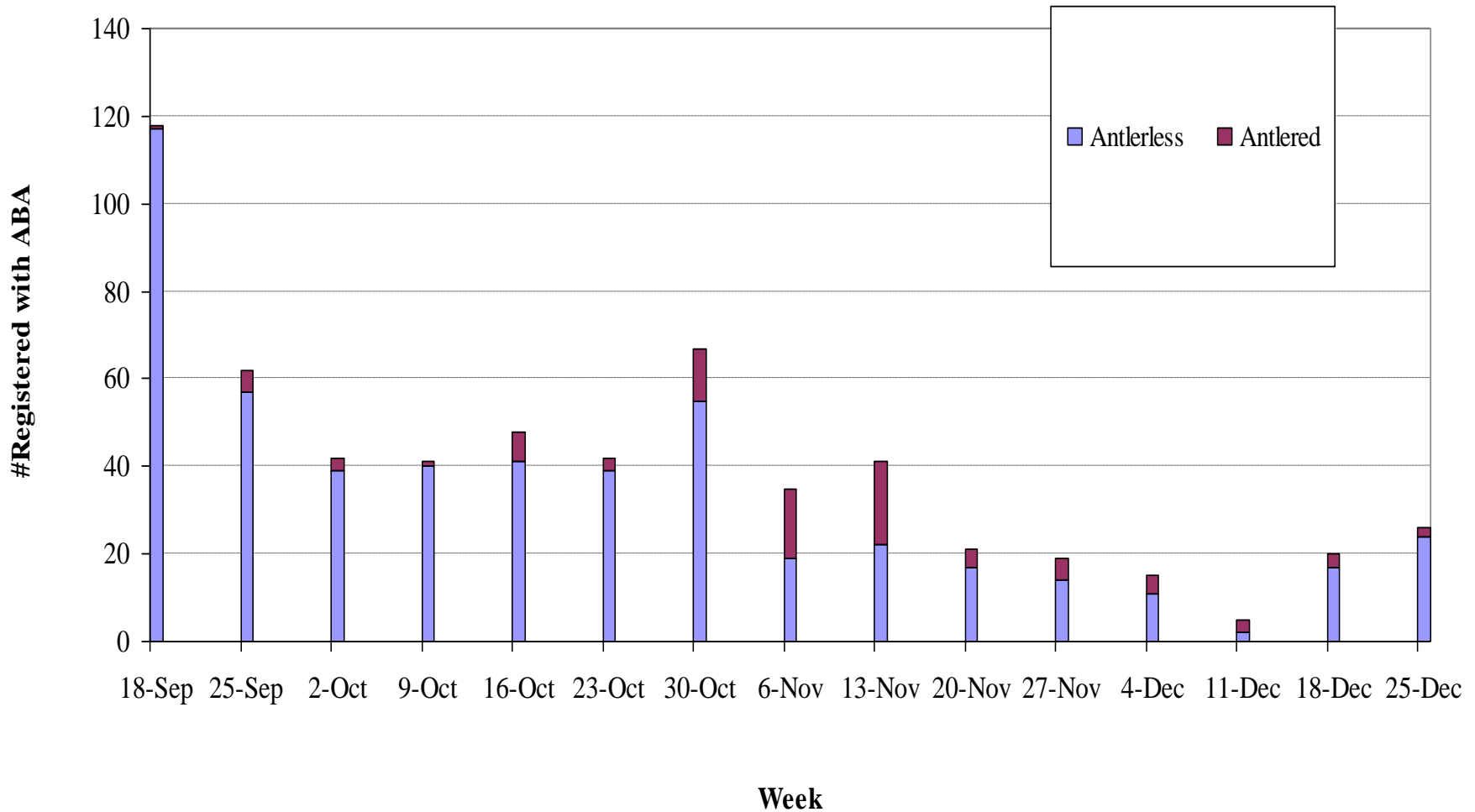


# Total Harvest by DHA, part 2

## Total Harvest by DHA

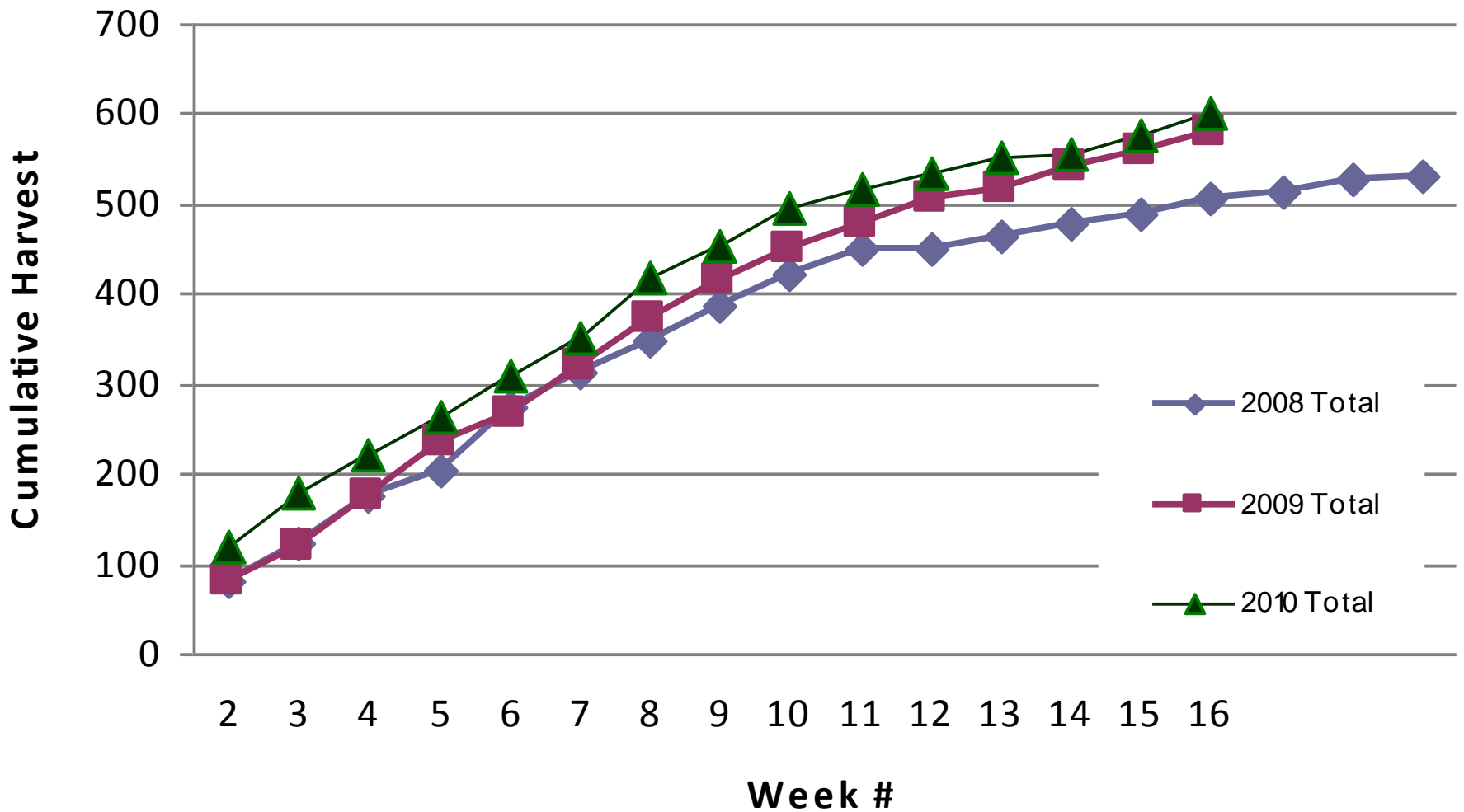


## Weekly Harvest

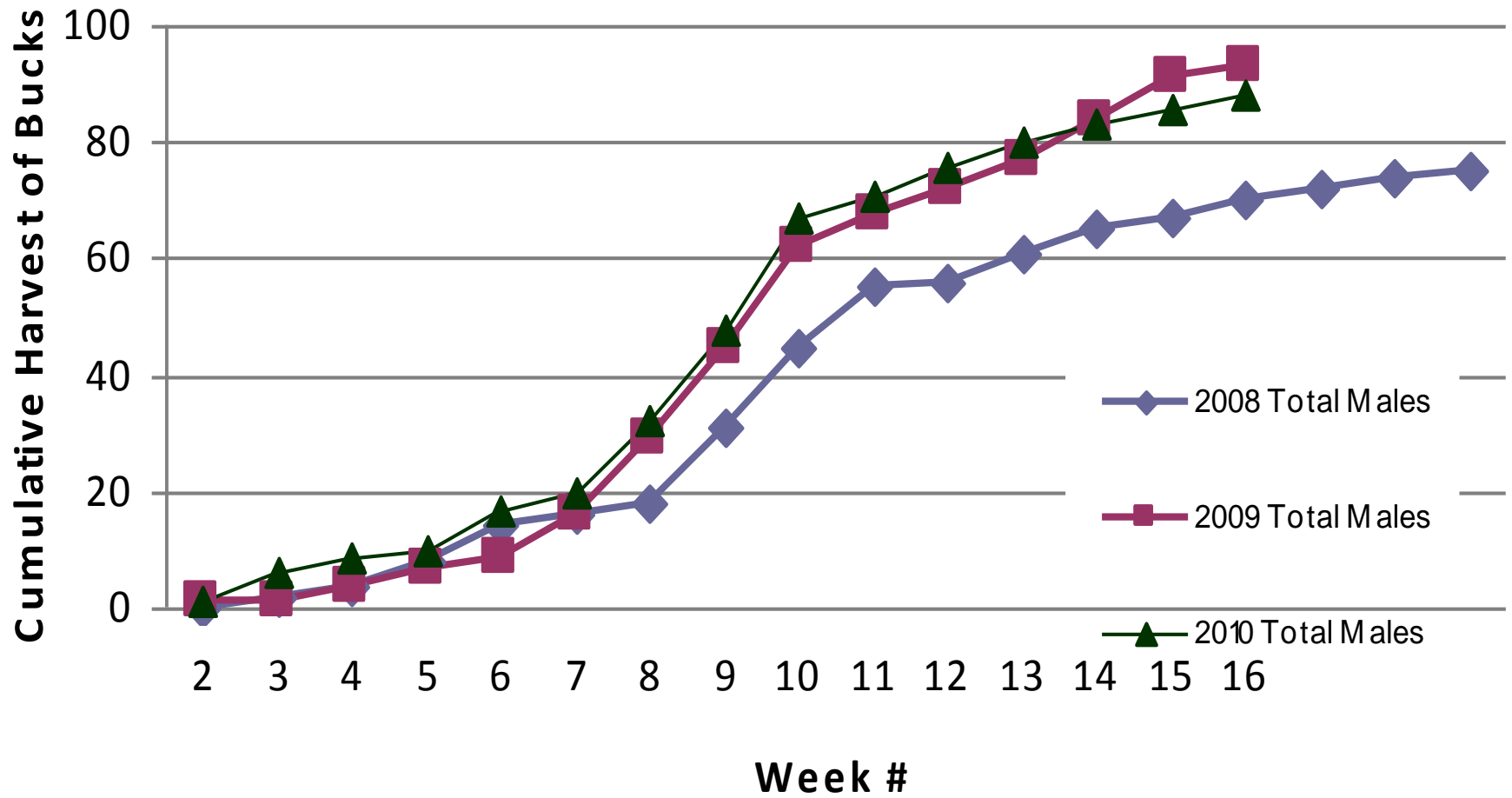


Note: Antlerless adult males that shed prior to being harvested are included in the “antlerless” category

# Total Harvest Year to Date by Year



# Harvest of Bucks Year to Date by Year



# Generally Cool Stats

	2010	6-year Average
Total Harvest/Hunter	1.78	1.87
Buck Harvest / Hunter	0.26	0.29
Anterless Harvest / Hunter	1.52	1.58
Harvest / Successful Hunters	2.22	2.34
Buck Harvest / Successful Hunter	0.32	0.36
Anterless Harvest / Successful Hunter	1.90	1.98

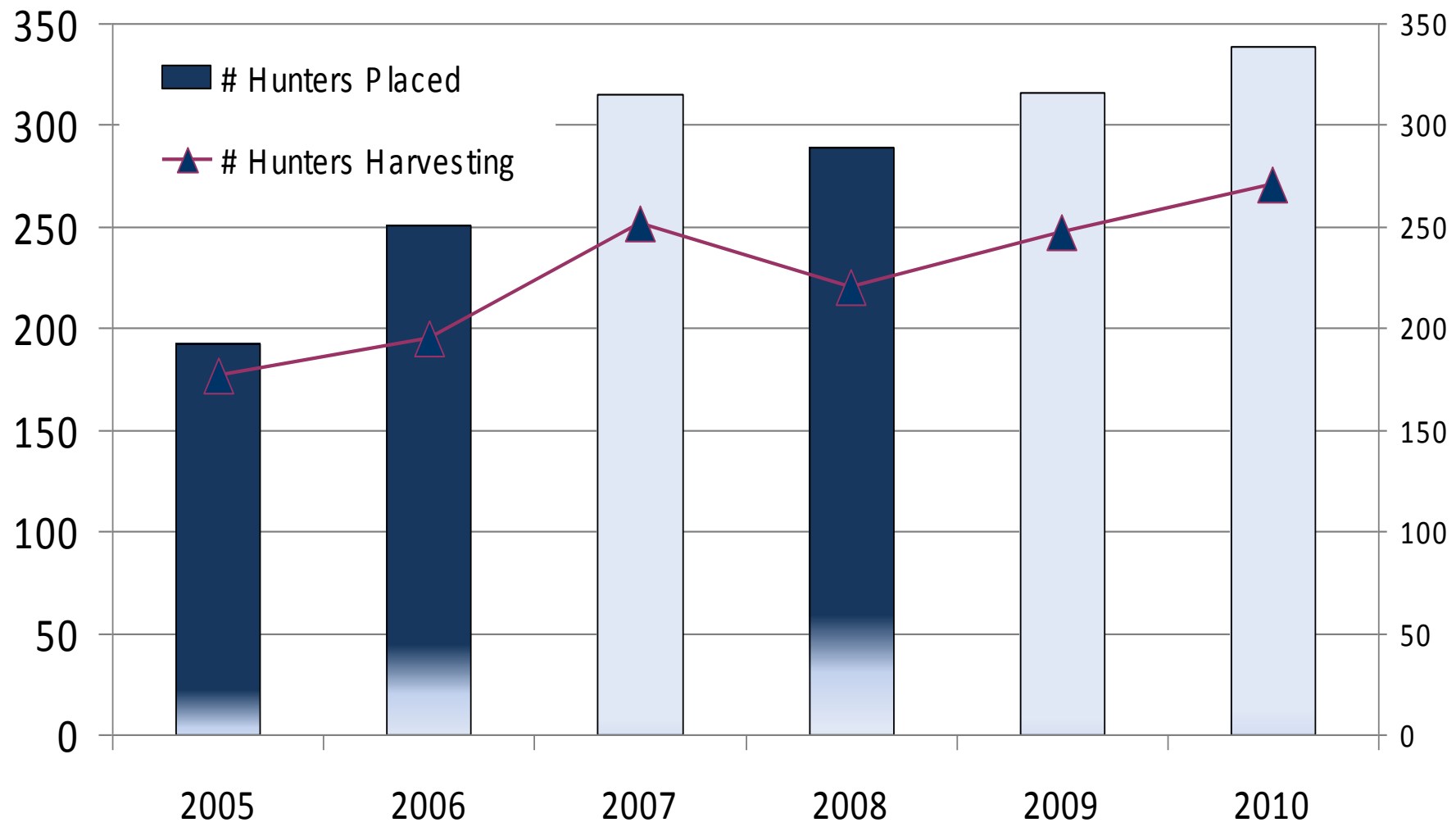
# General Stats, cont.

In the previous table, the Totals / Hunter include all registered hunters. This includes all of the hunters that failed to harvest any deer. Not knowing whether this was the result of not spending much time in the woods, or not even getting into the woods is unknown to me. Thus, I removed all of the zero-harvest hunters, and reported harvest / successful hunter. That is the difference between those two stats. And in reality, there is no real difference between those two stats.

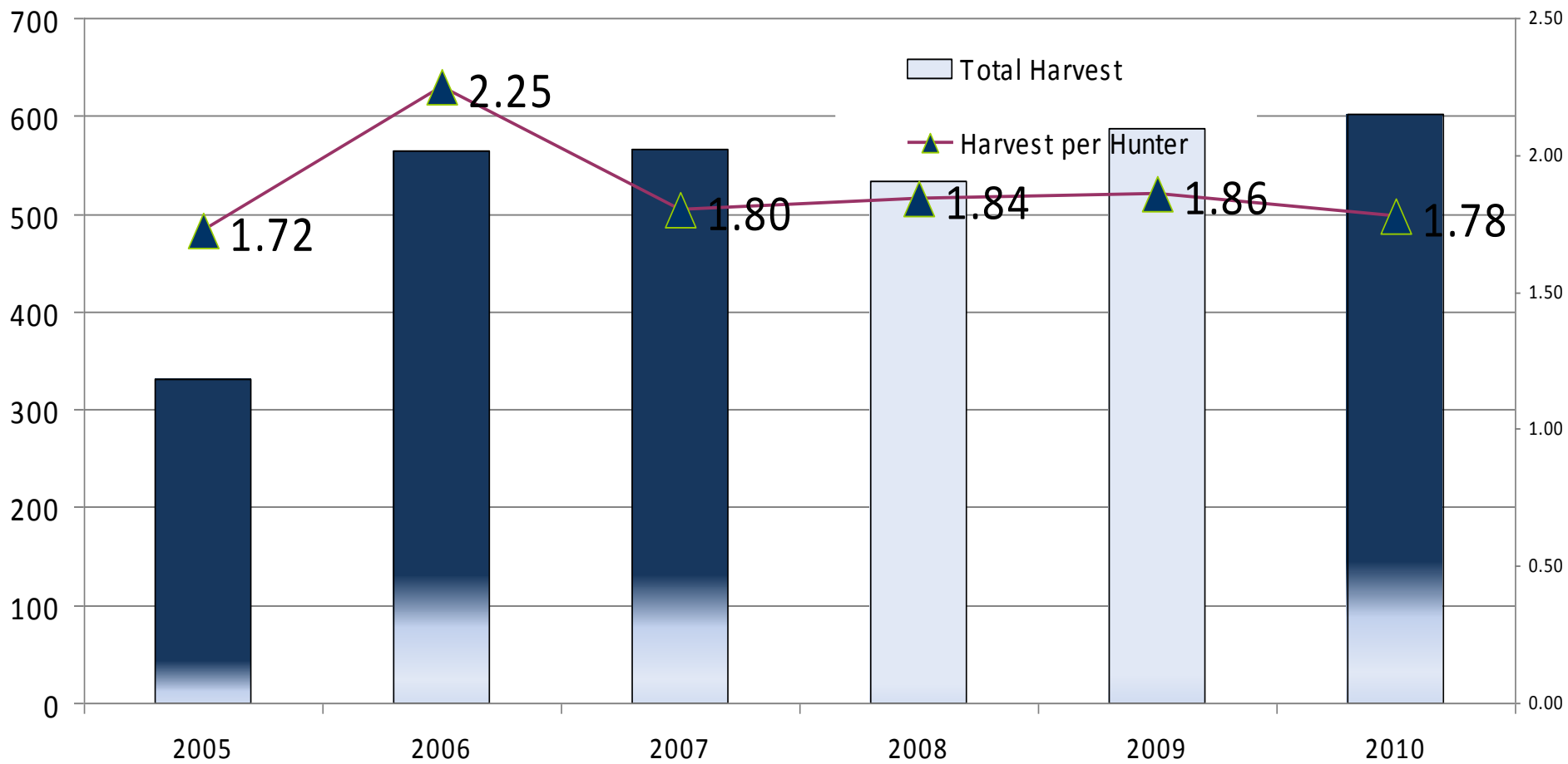
I think these summary stats speak volumes. Average MN bow hunter shoots one deer every 7 - 8 years (0.13 deer / year). Average Duluth bowhunter shoots 0.29 bucks / year, but shoots 1.58 antlerless deer / year.

Successful hunters shot 0.36 bucks / year over the last six years in Duluth. Successful hunters shot 1.98 antlerless / year over the last six years in Duluth, well above the MN average.



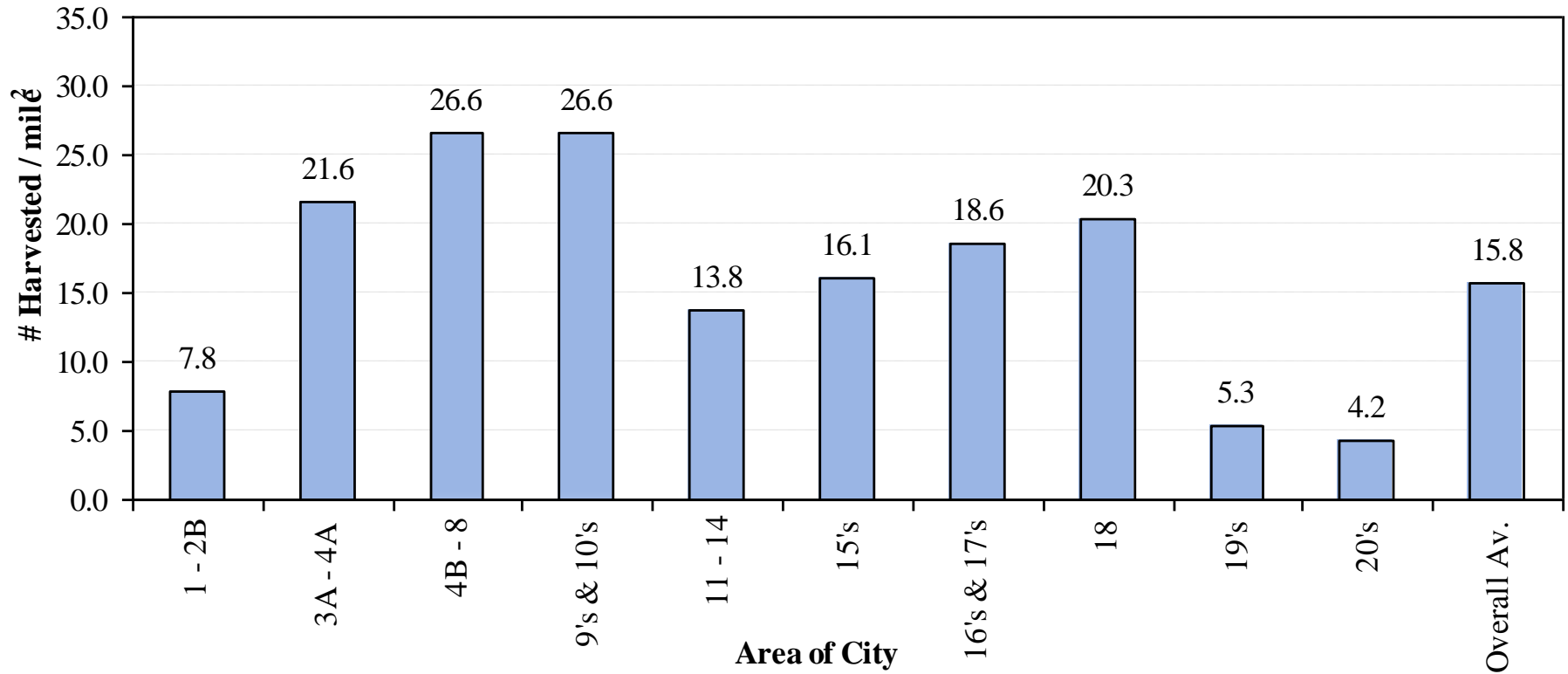


The trend over the last three years has been an increase in both participation, and in individual hunter success



While total harvest is up slightly since 2009, due to the increased number of hunters, the actual harvest per hunter is down slightly, to the lowest observed since the first season.

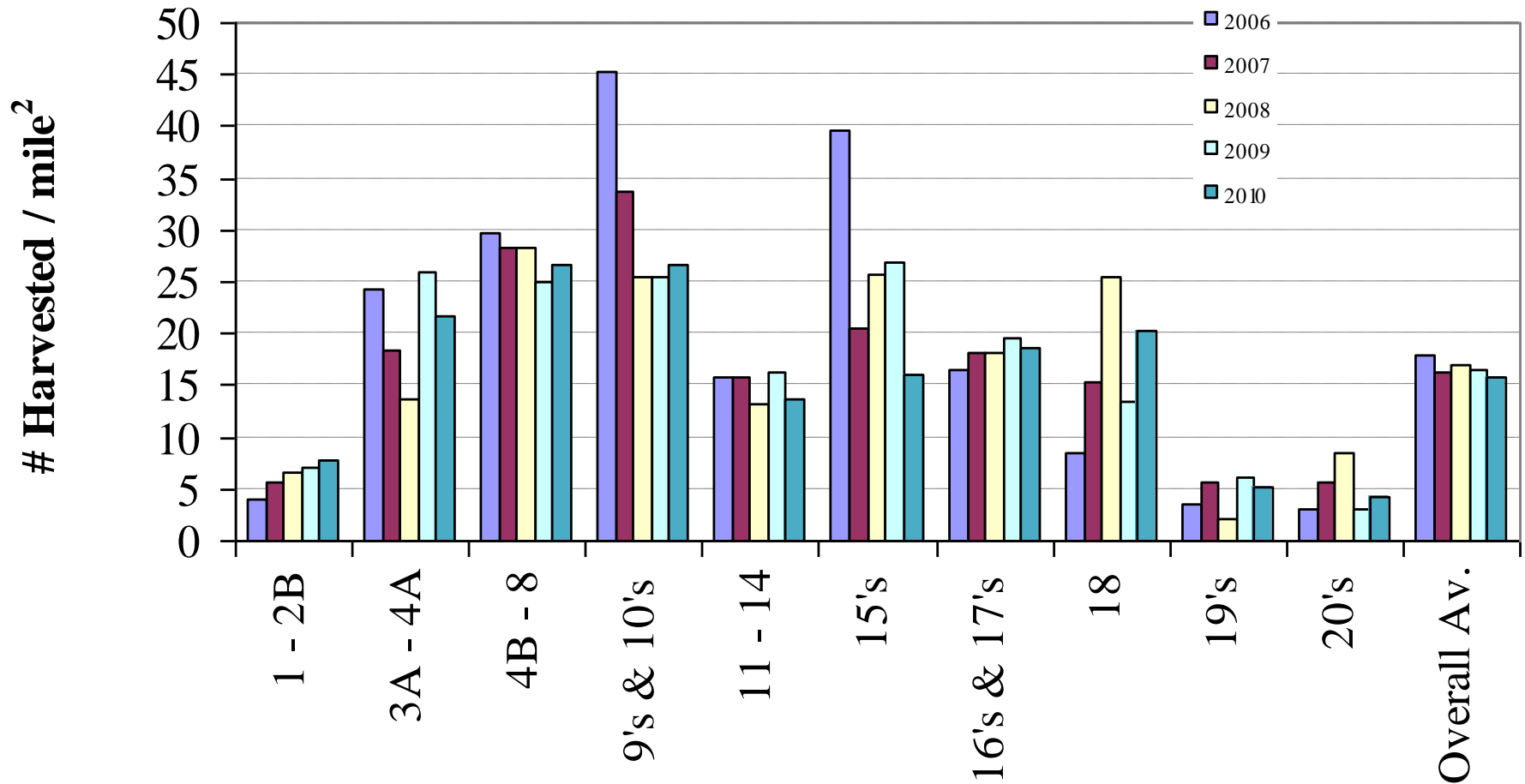
# 2010 Harvest per square mile



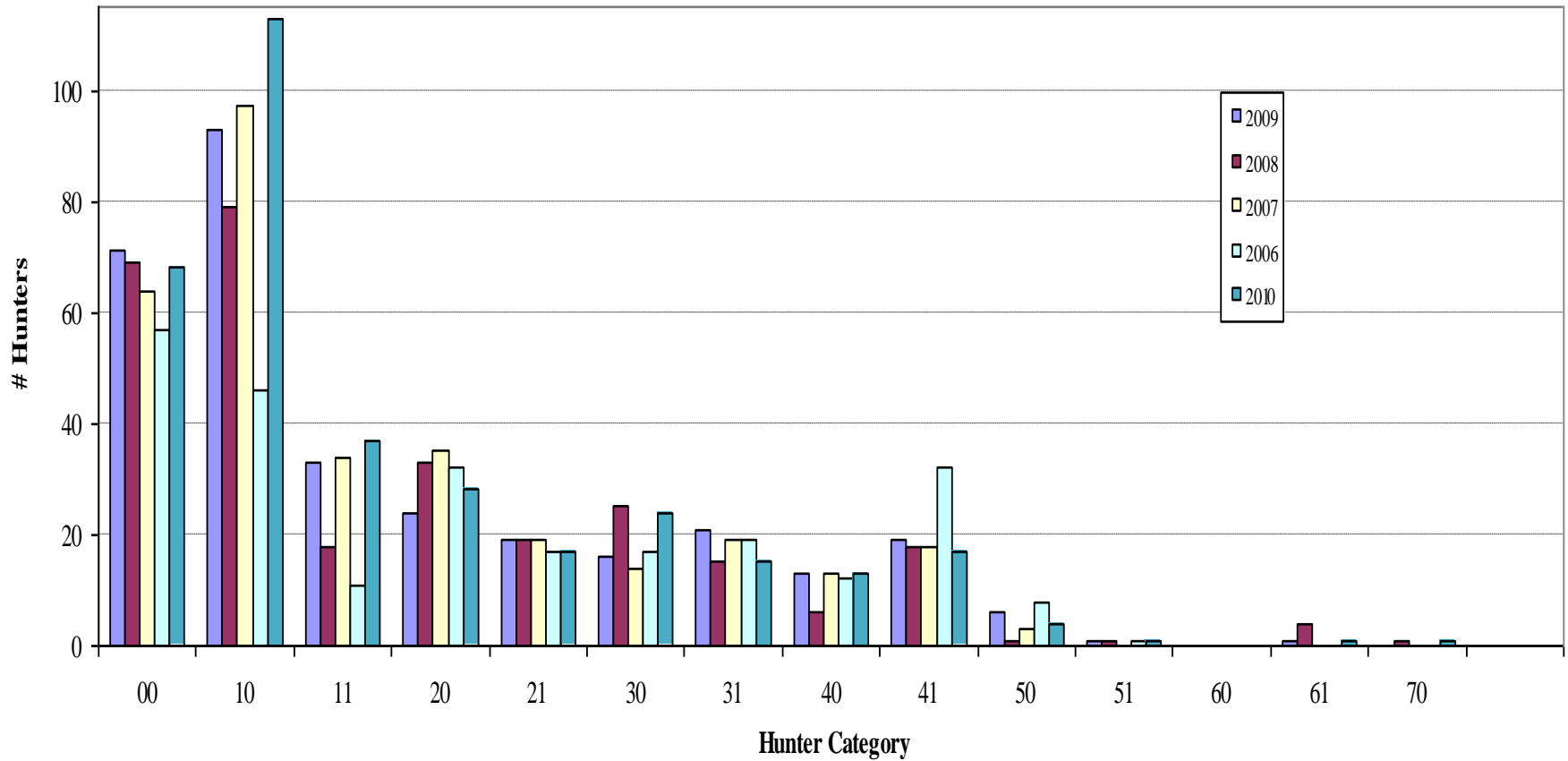
If the Hot Spot harvest is removed, the overall average drops to 15.6 deer harvested per mile<sup>2</sup>

# Harvest / mile<sup>2</sup>

## Last Five Seasons

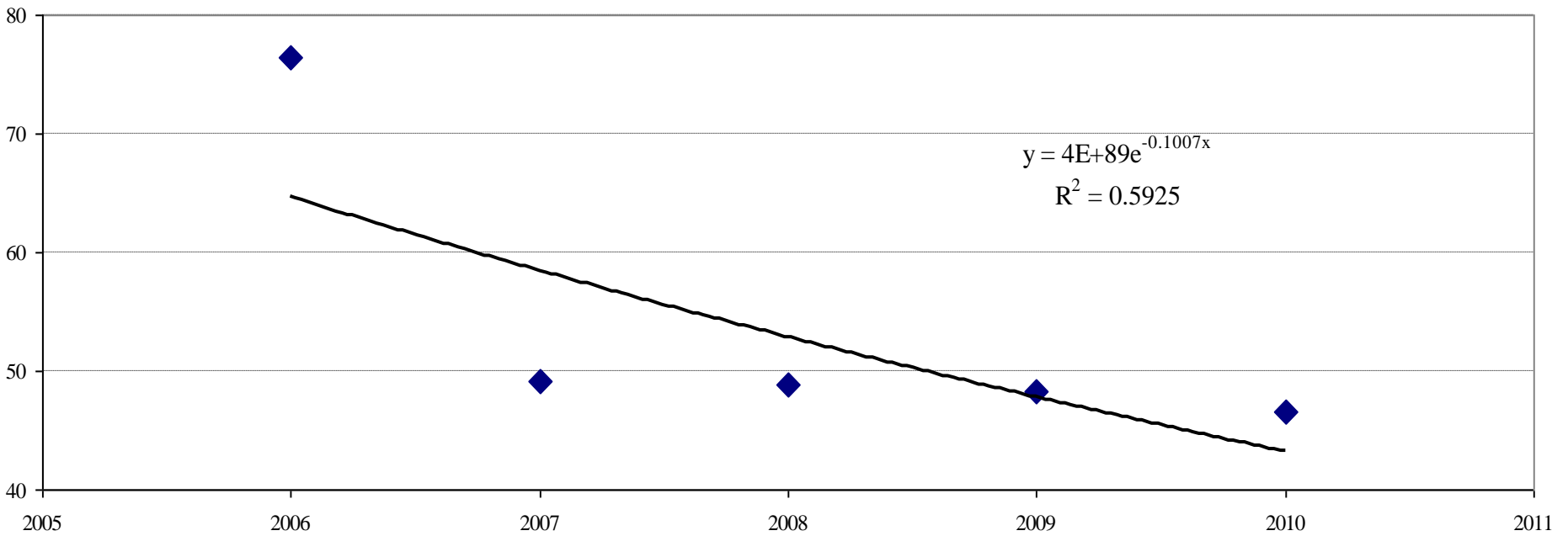


## Hunter Harvest, Last Five Years



- Hunter Category is a two part designation
- 10 means the hunter shot one antlerless, no bucks
- 11 means the hunter shot one antlerless and one buck
- 31 means the hunter shot three antlerless and one buck

## % Hunters Harvesting two or more deer / year



- In 2006, 76.4% of hunters shot two or more deer
- In 2007, 49.2% shot two or more deer
- In 2008, 48.3% shot 2 or more deer
- In 2009, 48.3% shot 2 or more deer
- In 2010, 46.6% shot 2 or more deer

- This years deer / mi<sup>2</sup> harvest rate was the lowest ever observed (15.8 vs 18.5 last year)
- Only 46.6 % of hunters harvested 2 or more deer.
- Is it getting harder to harvest deer in Duluth?

# Public vs. Private Lands

- 57.5% of harvest from Public Lands
- 42.5% of harvest from Private Land
- Demonstrates importance of forging positive relationships with Duluth property owners!
- 210 Different properties registered in 2010
- Only 142 Hunters turned in LOPs
  - Board knows of some hunters that never filled in the on-line registration form
  - At least one hunter got a ticket from MNDNR for **NOT** registering a private parcel



# Returning vs. New Hunters

- 212 of 248 Returning Hunters Harvested:
  - 426 Antlerless
  - 75 Antlered
  - 85.4% of Returning Hunters registered a deer
- 59 of 91 New Hunters Harvested:
  - 88 Antlerless
  - 13 Antlered
  - 64.8% of New Hunters registered a deer

# Local vs. Non-Local Hunters

	# Participating in 2010	# Antlerless
Locals	306	475*
Non-Local MN	29	29
Out-of-Staters	10	10

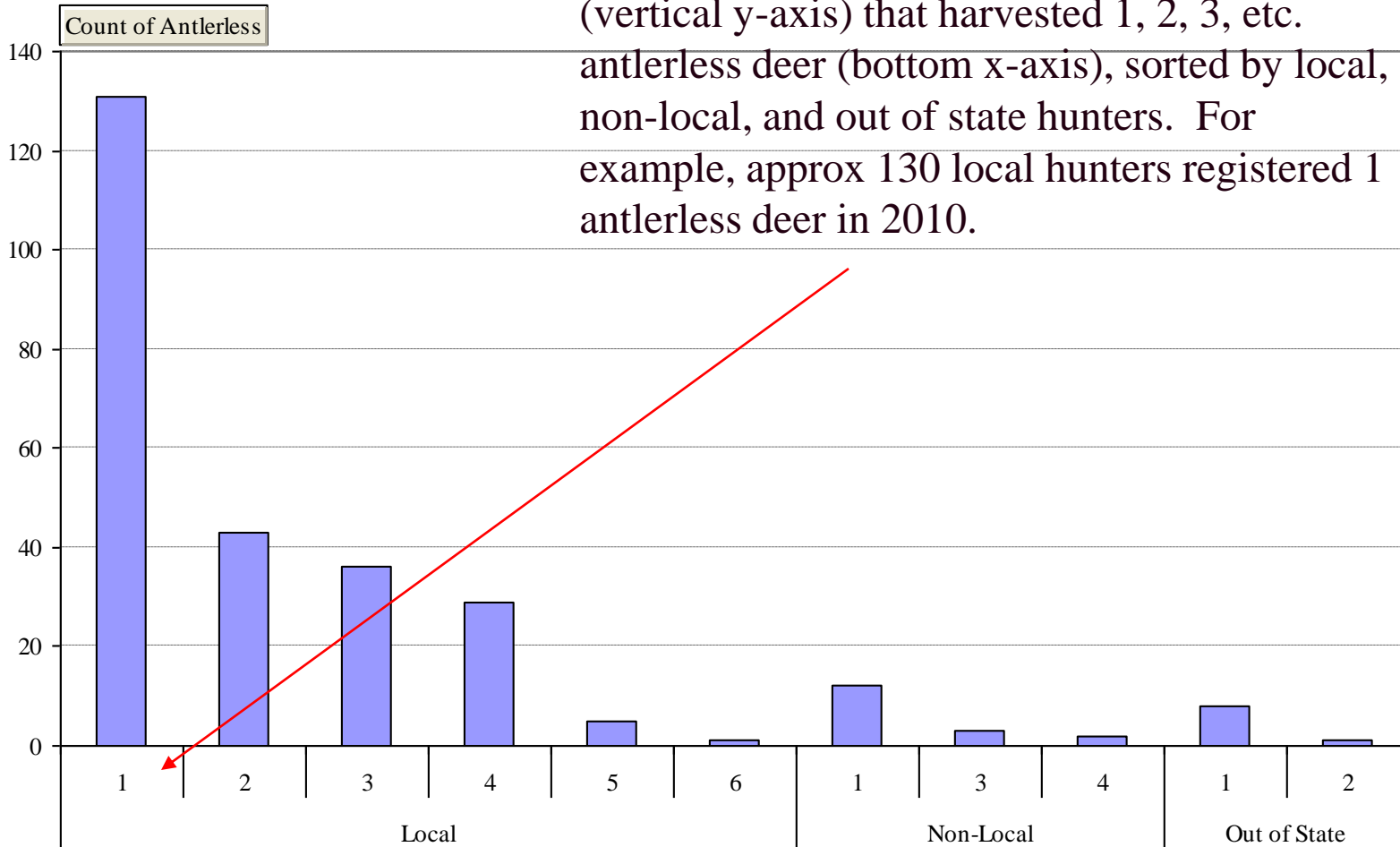
\* Includes 3 Adult Bucks that shed before harvest

# Local vs. Non-Local Hunters

- Non-locals accounted for 8.6% of the hunters (N=29), and 5.6% of the harvest
- Out-of-Staters accounted for 2.6% of the hunters (N=10) and 2.3% of the harvest
  
- Locals harvested 92.4% of does (N=475)
- Locals harvested 89.8% of bucks (N = 79)
  
- Non-locals harvested 5.7% of does (N=29)
- Non-locals harvested 5.7% of bucks (N=5)
  
- Out-of-Staters harvested 1.9% of does (N=10)
- Out-of-Staters harvested 4.5% of bucks (N=4)
  
- *Non-locals are hunters living further than Floodwood, e.g. Brainerd, Twin Cities*

Total

This graph shows the number of hunters (vertical y-axis) that harvested 1, 2, 3, etc. antlerless deer (bottom x-axis), sorted by local, non-local, and out of state hunters. For example, approx 130 local hunters registered 1 antlerless deer in 2010.

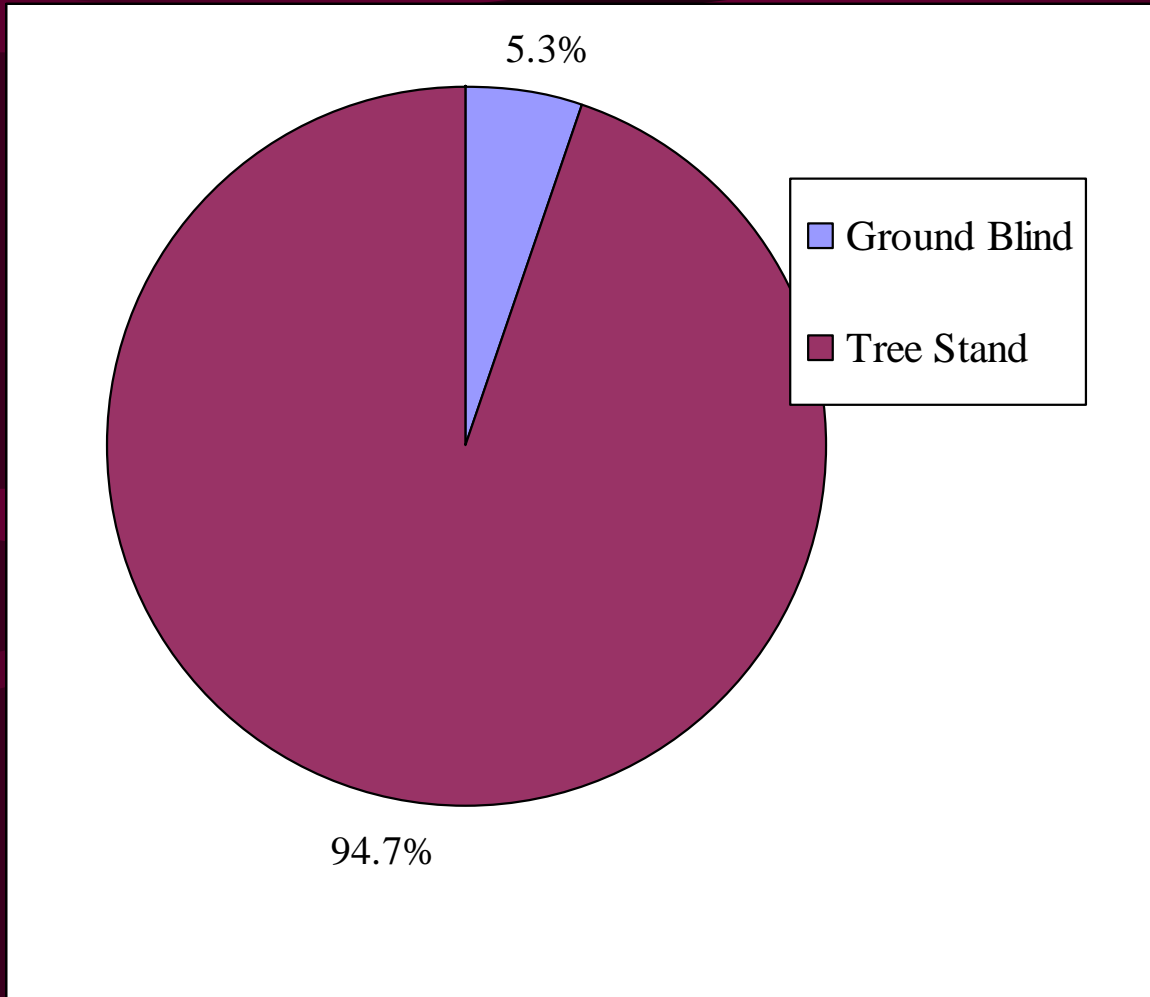


Drop Series Fields Here

Total

Hunter Geography Antlerless

# Harvest from Tree Stands vs. Ground Blinds



Many asked for ground blinds, few used them

Zero incidents reported. Thank you for staying safe!!

# Early Season Tags

- 21 Deer were registered using the special Early Season Antlerless Tags
  - 23 in 2008
  - 20 in 2009
- Have no idea how many were purchased and not used

# Venison Donation

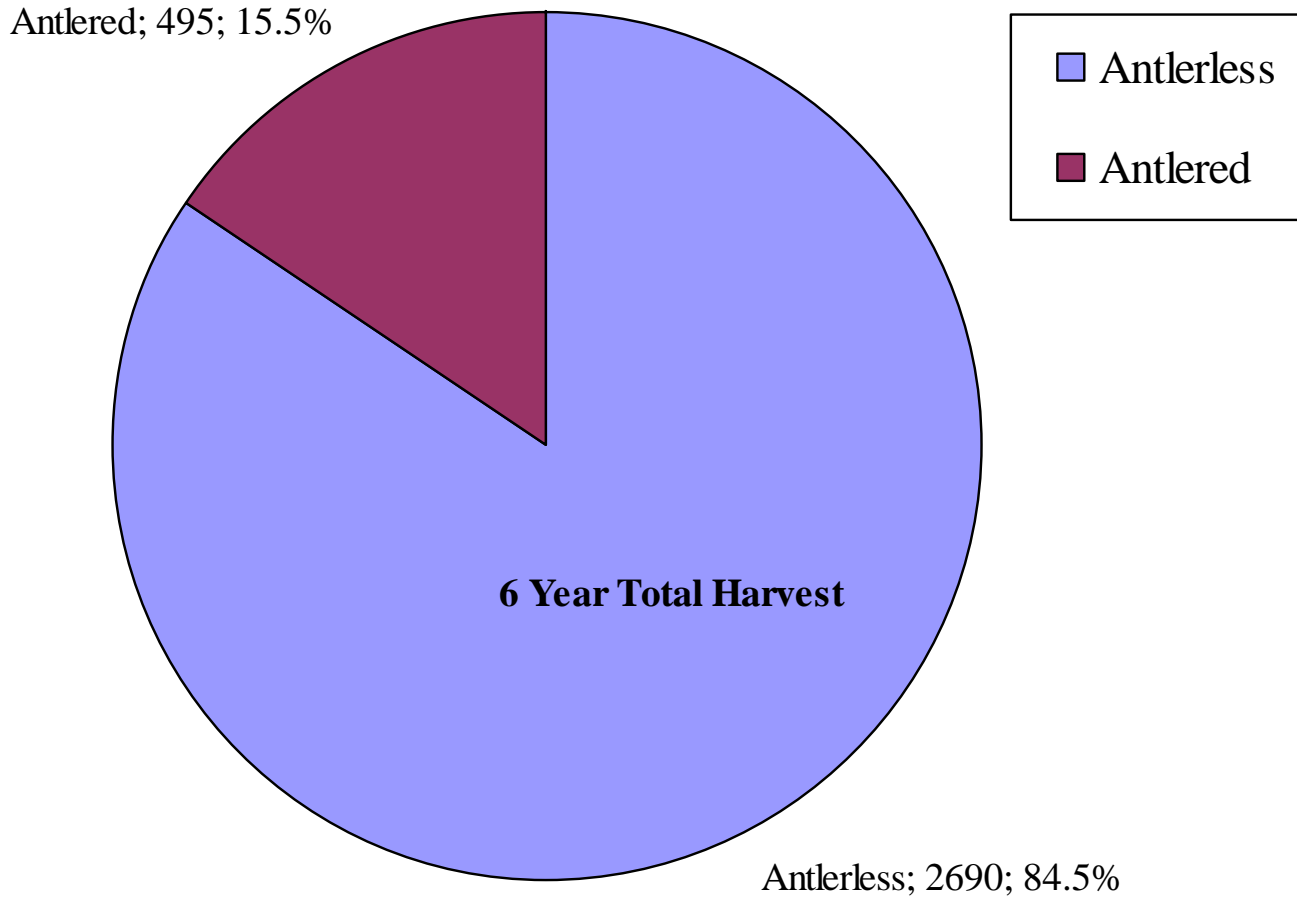
- 373 harvested deer were reported as “Donated”
  - Includes Food Shelf, friends, family, etc.
  - 304 in 2009
- All or part of 62.2% of harvested deer were donated.

# Lottery Results

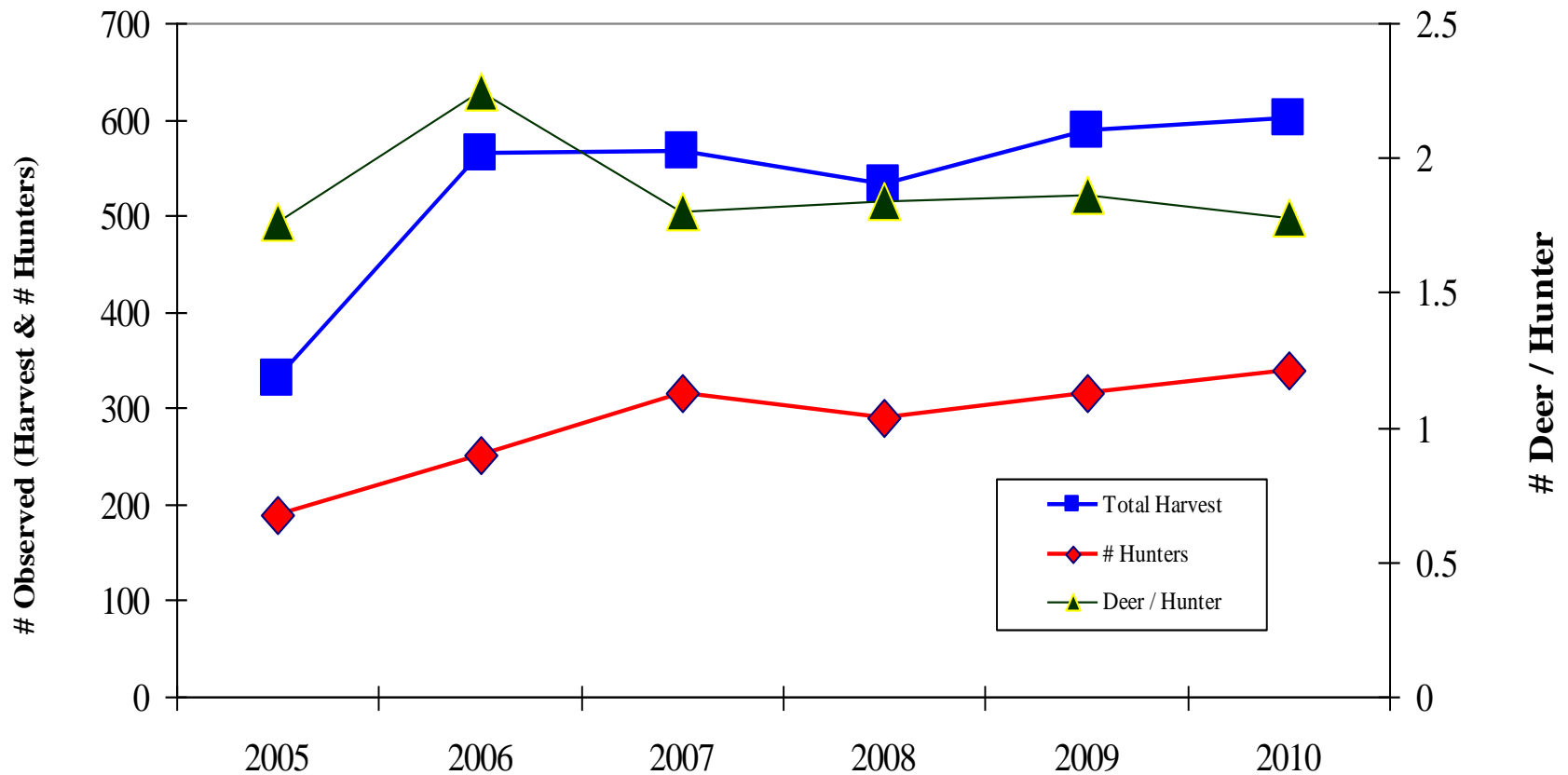
- **80.0%** of Returning Hunters received their 1<sup>st</sup> Choice DHA!
  - 176 hunters (out of 255 Returning Hunters) got their first choice, and **DID NOT** have to attend the Lottery!
  - 28 Hunters received their First Choice at the Lottery
  - 4.8% received 2<sup>nd</sup> Choice DHA
  - 84.8% of Returning Hunters got to hunt where they wanted to!
- Hard to argue that the system isn't working well, in spite of what you might read or post online!



# Harvest Summary 2005 - 2010



3185 Deer in Six Years!!!!



- Harvest essentially flat since 2006, maybe a tad up over last three years, but that may reflect the increase in hunter placement
- # deer / hunter stable at 1.8, or maybe slightly lower in 2010
- # Hunters highest to date, a bit higher than the 300 cap., due to placements of individuals in private parcels

# Compared to State Average

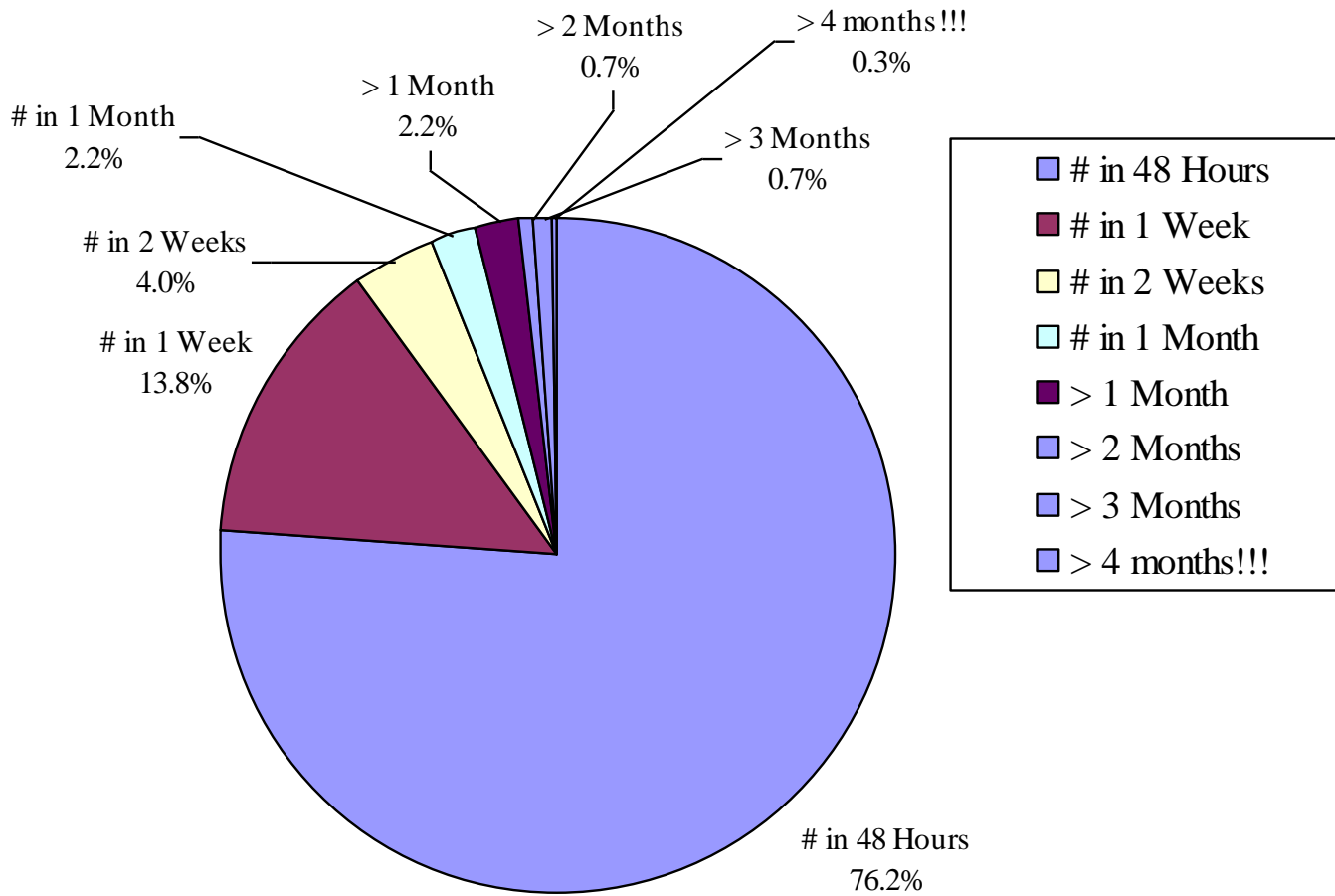
- Duluth Bowhunt saw an increase in hunter participation
- Harvest / Hunter declined slightly to 1.78 / Hunter
  - 1.86 Deer / Hunter in 2009
- Total Duluth harvest **up 2.3%** from 2009 (588 vs. 602)
  
- Total Statewide deer harvest up 6.3% from 2009
- Statewide Archery harvest up 6.5% from 2009
  - **22,054 total deer harvested by archery in MN 2010**
  - **2.7% of 2010 state archery harvest came from Duluth**
  
- Not a bad showing by Duluth Bowhunters!

# Compared to State Average

- Special Archery Hunts
  - 18 Listed in State's 2010 Summary
  - Duluth not listed.
- 2010 Results for all 18 Special Hunts (Duluth):
  - 202 Adult Male (88 in Duluth)
  - 333 Adult Female (324)
  - 76 Fawn Male (87)
  - 63 Fawn Female (100)
  - 674 Total (602 in Duluth!)
- Duluth's one hunt almost doubles these numbers!

# Mandatory Registration

- Rules Manual states that hunters have 48 hours to register their harvest.
- How'd we do?
- **BAD!!!!!!**



**Time the Register**

- 76.2% deer registered within 48 hours.
  - Up from 60.2% in 2008, and 70.8% in 2009.
  - So, Thank You!
- I can live with the 20.5% that did so within 1 week
- What makes my job so difficult is the 10.0% of you that waited a month or more!
  - 23 deer registered > 30 days late!
  - Only 6 deer registered > 90 days late!!!
  - 10 in 2008, and 2 in 2009, so this is getting worse!
  - 19 deer not registered until HCs called to remind!
    - *Seriously? Are you REALLY that busy????*
    - Down from 35 in 2008, but up from 16 in 2009
    - That is frustrating for Bork, the HCs, and the Board!

And you can't claim you didn't know since I sent summaries every two weeks. All you can claim is that you don't care all that much.

# Questions?

- If they're legitimate questions, ask Bork
- If you just want to vent or complain about the Hunt, please direct that to [infoduluthhunt@gmail.com](mailto:infoduluthhunt@gmail.com)